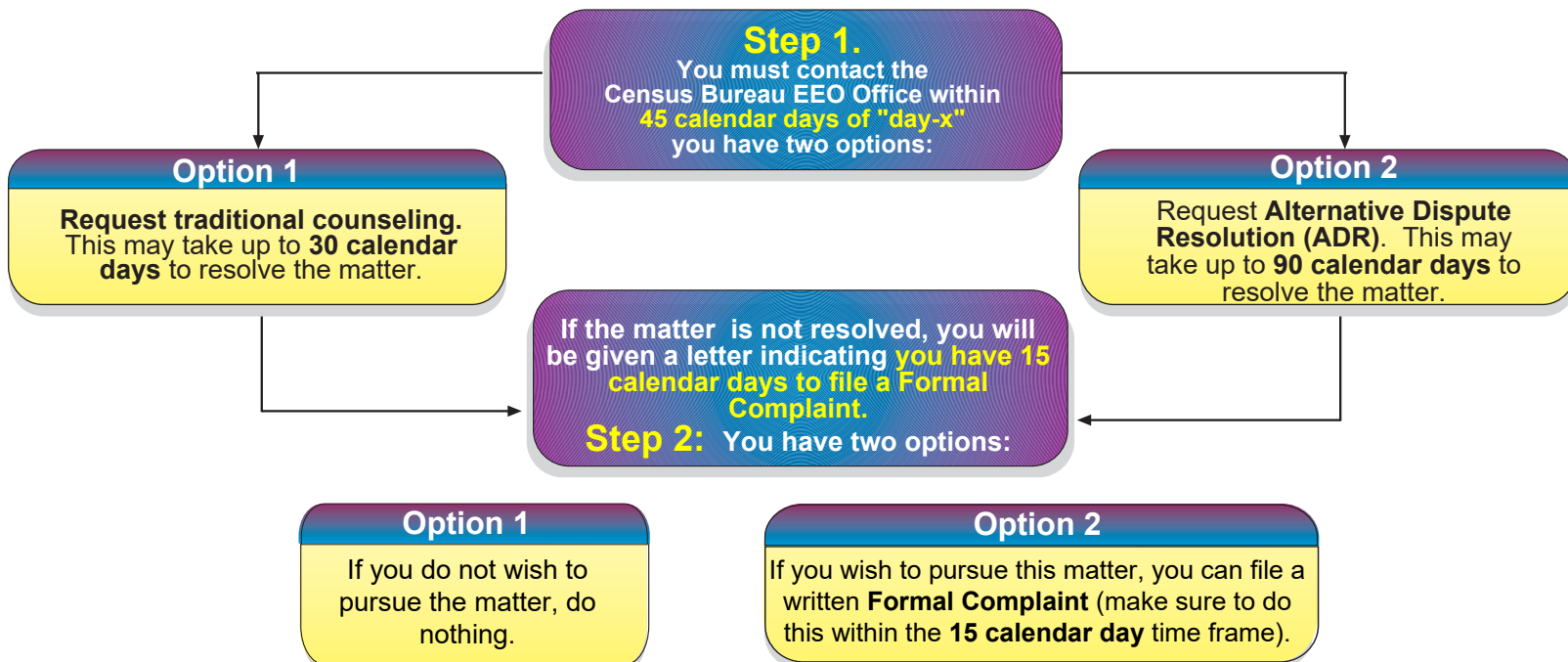


U.S. Census Bureau

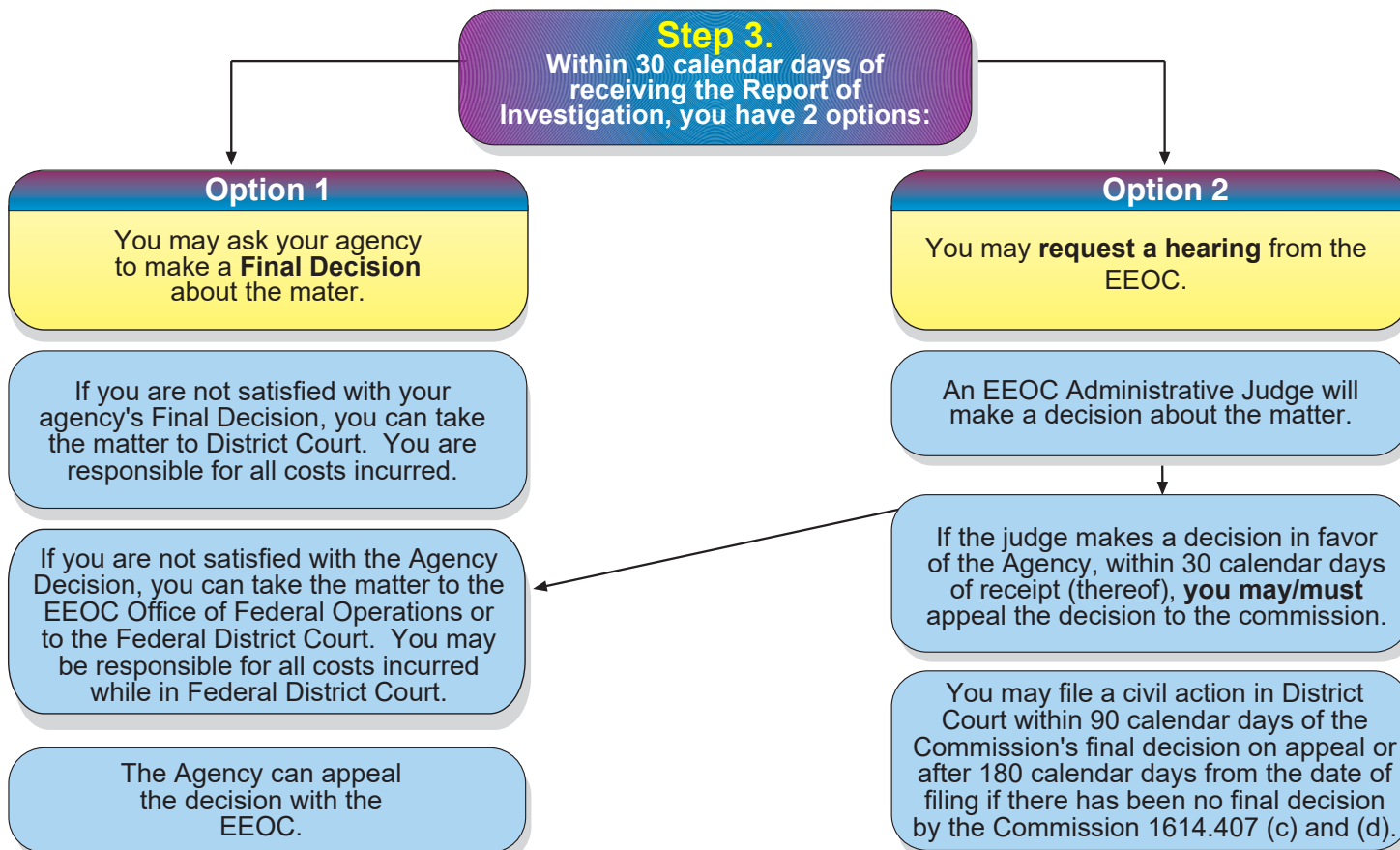
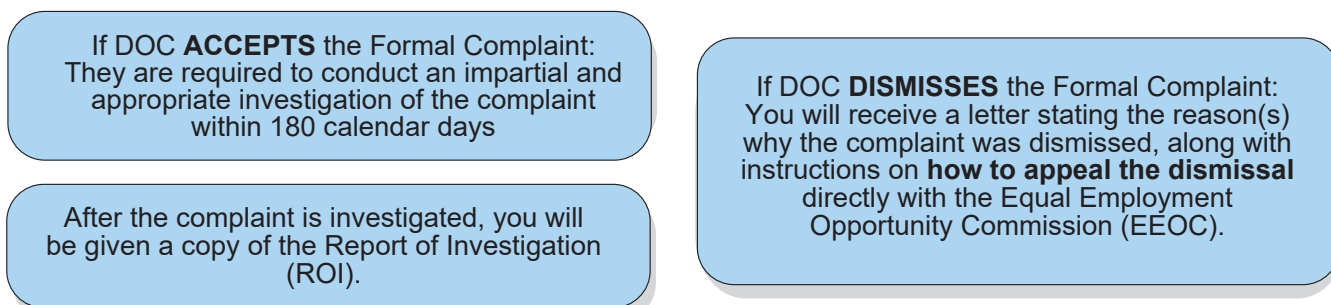
The EEO COMPLAINT Process

An incident happens on "day-x"

If you believe this incident was a result of a decision based on your race, religion, color, sex/gender (including pregnancy, sexual orientation and gender identity), Pregnant Workers (limitations related to pregnancy, childbirth or related medical conditions), national origin, age (40 or older), genetic information (including family medical history), disability (mental or physical) or retaliation/reprisal.



The Department of Commerce, Office of Civil Rights (DOC) will **ACCEPT** or **DISMISS** the Formal Complaint



Contact Information:

For information about the EEO Complaints Process, go to the Equal Employment Opportunity Commission (EEOC) web site at: www.eeoc.gov

Headquarters and Regional Offices:
Office of Equal Employment Opportunity, Diversity, and Inclusion
Telephone: 301-763-2853
Toll Free: 1-800-872-6096
e-Fax: (301) 763-9590
Email: eeo.complaints@census.gov
Website: www.census.gov/eeodi

National Processing Center:
Office of Equal Employment Opportunity, Diversity, and Inclusion
Telephone: 812-218-3472
Toll Free: 1-877-576-7740
e-Fax: (301) 763-9590
Email: eeo.complaints@census.gov
Website: www.census.gov/eeodi

Websites:

www.osec.doc.gov/ocr
www.mspb.gov
www.oig.doc.gov
www.osc.gov