

Law Enforcement – Suspected Opioid Overdose

For any intentional or unintentional suspected opioid overdose by any route

History

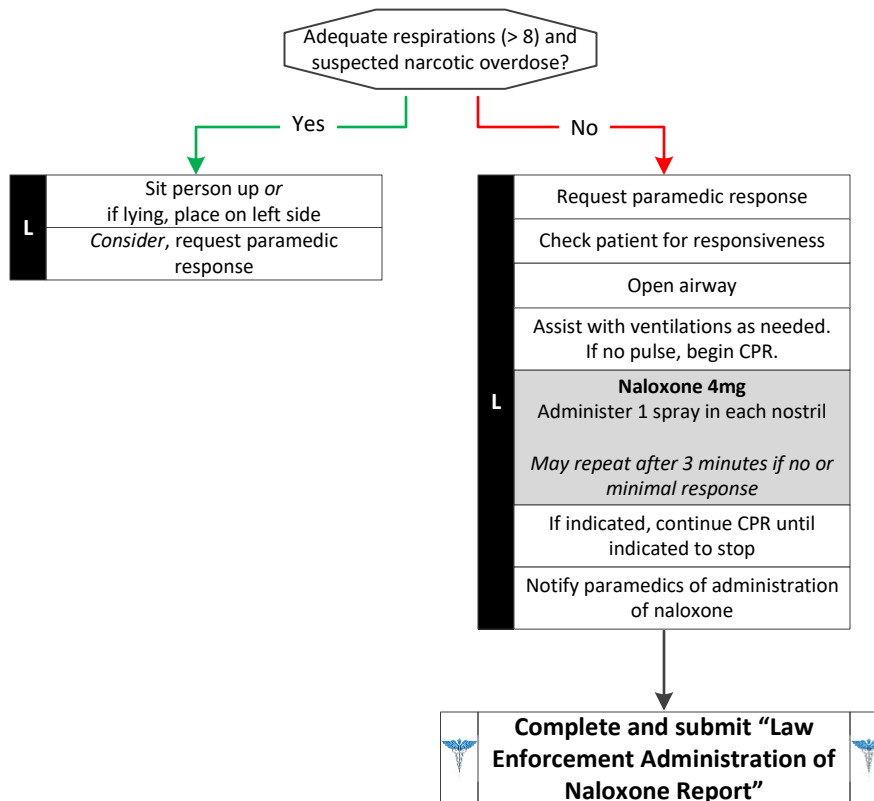
- Ingestion or suspected ingestion of opioid(s)
- Substance ingested, route, and quantity
- Time of ingestion
- Reason (suicidal, accidental or criminal)
- Past medical history and medications

Signs and Symptoms

- Mental status changes/unresponsive
- Slow respirations or apneic
- Pupillary changes

Special Considerations

- If in doubt, request paramedic response



General Treatment Protocols