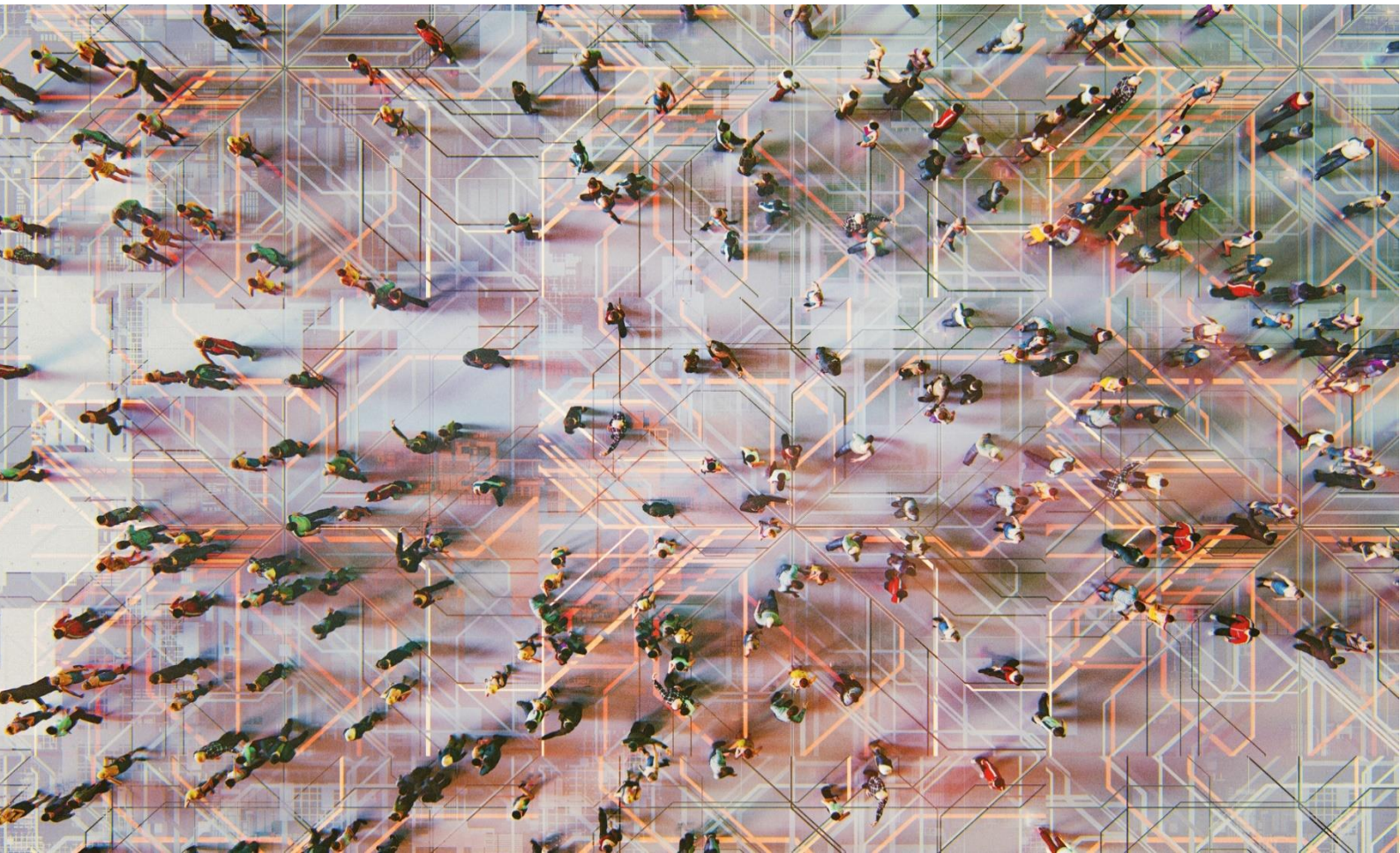


# PUBLICATION LAUNCH

10 March 2022, 15:00-17:00 CEST | Paris | Virtual

## “The Contribution of Migration to Regional Development”

[Register Here](#)



## ✚ What's the issue?

**Many OECD regions are ageing and have a shrinking working-age population. Migration can alleviate those trends.** In 2019 alone, 5.3 million new permanent migrants settled in OECD countries, an increase of around a quarter since 2010. New migrants come in many forms, from highly-skilled individuals such as doctors or scientists to individuals who fill vacancies in low-skilled occupations.

**Within OECD countries, migrants settle unevenly and are more concentrated in specific areas such as large metropolitan regions.** Consequently, the opportunities and challenges of migration differ widely across regions, cities and rural areas. Therefore, effective policy on migrant integration and regional development inherently requires a subnational perspective and detailed geographic data and evidence.

## ✚ About the event

Organised with the generous support of DG REGIO of the European Commission, the event will provide novel insights on the contribution of migration to regional development in OECD countries. It will also explore some of the major challenges and opportunities of migration across different territories and discuss the importance of granular data. The event will bring together leading academic experts as well as policy makers to:

- **Discuss** the challenges and opportunities of managing migration at the regional and local level,
- **Explore** new evidence on how migrants might contribute to regional development,
- **Learn** more about new data and methods to better understand migration and the challenges migrants face in regional labour markets.

## ✚ Registration

Please register to the event on the following link:

[https://meetoe.cd1.zoom.us/webinar/register/WN\\_aK64EtxsT4emqll0oJaQ0w](https://meetoe.cd1.zoom.us/webinar/register/WN_aK64EtxsT4emqll0oJaQ0w)

## ✚ Speakers



**Meghan BENTON**  
Head of Research and  
Europe, Migration Policy  
Institute



**Çağlar ÖZDEN**  
Lead Economist,  
World Bank



**Lewis DIJKSTRA**  
Head of the Economic  
Analysis sector in DG for  
Regional and Urban Policy



**Natalia POPOVA**  
Labour Economist, Labour  
Migration Branch, ILO



**Christina GATHMANN**  
Head of Labour Market  
Division,  
LISER



**Giovanni PERI**  
Prof. of Economics,  
University of California



**Madeline ZAVODNY**  
Prof. of Economics,  
University of North Florida



**Sari KERR**  
Senior Research Scientist,  
Wellesley College



**Nadim AHMAD**  
Deputy Director,  
Centre for  
Entrepreneurship, SMEs,  
Regions and Cities



**Rüdiger AHREND**  
Head of Economic  
Analysis, Data and  
Statistics Division, CFE,  
OECD

# Agenda

15:00-15:10

Opening remarks

**Nadim Ahmad**, Deputy Director, CFE, OECD

15:10-15:25

Presentation of the report

**Lukas Kleine-Rueschkamp** (OECD)

15:25-16:05

Roundtable of Policy Makers

**Facilitation:** Paolo Veneri (OECD)

- ✚ **Meghan Benton**, Director of International Research, Migration Policy Institute
- ✚ **Lewis Dijkstra**, Head of the Economic Analysis sector in DG for Regional and Urban Policy, European Commission
- ✚ **Çağlar Özden**, Lead Economist, World Bank
- ✚ **Natalia Popova**, Labour Economist, ILO Labour Migration Branch

Break

16:10-16:55

Roundtable of Academics

**Facilitation:** Cem Özgüzel (OECD)

- ✚ **Christina Gathmann**, Head of Labour Market Division, LISER
- ✚ **Sari Kerr**, Senior Research Scientist, Wellesley College
- ✚ **Giovanni Peri**, Professor of Economics, University of California, Davis
- ✚ **Madeline Zavodny**, Professor of Economics, University of North Florida

16:55 -17:00

Closing remarks

**Rüdiger Ahrend**, Head of EDS Division, CFE, OECD

## **About the OECD Centre for Entrepreneurship, SMEs, Regions and Cities**

The OECD Centre for Entrepreneurship, SMEs, Regions and Cities provides comparative statistics, analysis and capacity building for local and national actors to work together to unleash the potential of entrepreneurs and small and medium-sized enterprises, promote inclusive and sustainable regions and cities, boost local job creation, and support sound tourism policies.

### **CONTACT**

If you are interested to learn more about the project or to get involved, please contact  
Cem Özgüzel | [cem.ozguzel@oecd.org](mailto:cem.ozguzel@oecd.org)

