

Connecting to the Internet

What do I need to connect?

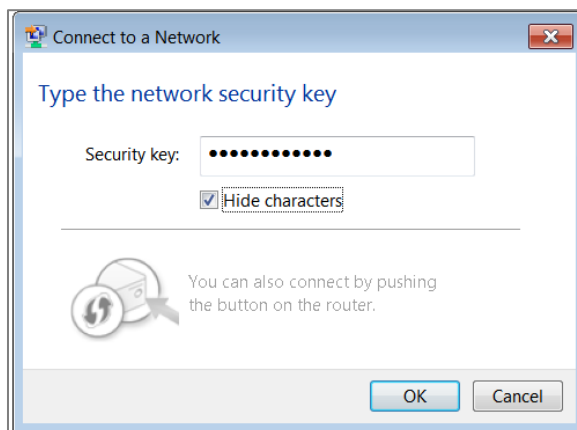
- **A computer.** This could be a personal device or an NM device.
- **An internet connection.** This can be a wireless or wired connection. Most NM devices have wireless connectivity.
- Any **passwords** used to access personal internet connections.

Steps to Connect to Personal Wi-Fi Internet Connection

1. Turn on and start up device as normal.
2. Click the network icon in the lower right of your screen. (in image above)
3. Select your home Wi-Fi connection from the list.
4. Provide Wi-Fi password and click OK, if required for your home connection.



#2



#3

5. Check network icon on lower right. The connectivity icon will appear with bars.



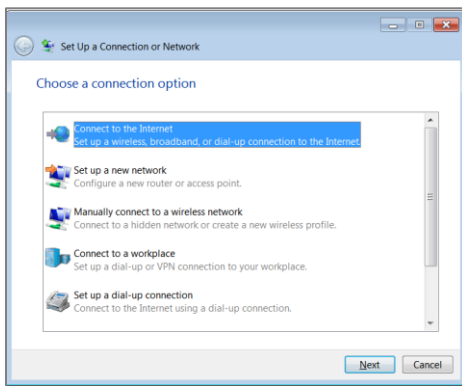
Steps to Connect to Broadband (Wired) Connection

1. Click [Open Network and Sharing Center](#) that appears in Step #3 above.

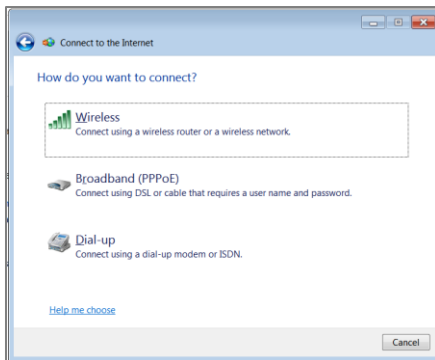
or Click  > **Control Panel > Network and Sharing Center.**

The **Network and Sharing Center** window appears.

2. Click [Set up a new connection or network](#).
3. Click **Connect to the Internet and Next.**



4. Click **Broadband** if home network requires a cable connection.



5. Enter **User Name** and **Password** for your home connection.
6. Click **Connect**.
7. Check network icon on lower right. Connectivity image will appear with bars.

