



National Missing and Unidentified Persons System

# NamUs



**A Powerful Tool for Law Enforcement Officers,  
Medical Examiners and Coroners**

The National Missing and Unidentified Persons System offers criminal justice agencies a powerful tool for resolving missing, unidentified, and unclaimed person cases.

**Free. Secure.  
Nationwide.  
[NamUs.gov](http://NamUs.gov)**



# WELCOME

**T**he National Missing and Unidentified Persons System (NamUs) is a program that connects criminal justice agencies and families across the nation with information and resources to resolve missing, unidentified, and unclaimed person cases.

Funded and administered by the National Institute of Justice (NIJ), NamUs resources are provided at no cost to law enforcement, medical examiners, coroners, allied forensic professionals, and family members of missing persons.

The suite of no-cost NamUs resources includes technology, forensic and analytical services, investigative support, victim services, and online training programs.

By bringing people, information, forensic science, and technology together, NamUs helps resolve missing, unidentified, and unclaimed person cases across the country, while providing support to victims and their families.

**“Funded and administered by the National Institute of Justice, all NamUs resources are provided at no cost”**





# Content

<b>04-05</b> .....	Overview
<b>06</b> .....	NamUs Technology
<b>08</b> .....	Regional Program Specialists
<b>10</b> .....	Forensic Services—Fingerprints
<b>12</b> .....	Forensic Services—DNA Analysis
<b>14</b> .....	Forensic Services—Forensic Odontology
<b>16</b> .....	Forensic Services—Forensic Anthropology
<b>18</b> .....	Analytical Services
<b>20</b> .....	Research and Data
<b>22</b> .....	Victim Services
<b>Back Page</b> .....	Contact us

# 600,000

Number of individuals that go missing in the United States every year. Fortunately, many missing children and adults are quickly found, alive and well. However, tens of thousands of individuals remain missing for more than one year – what many agencies consider “cold cases.”

# 4,400



Estimated number of unidentified bodies that are recovered each year, with approximately 1,000 of those decedents remaining unidentified after one year.



The NamUs program brings people, information, forensic science, and technology together to help resolve missing, unidentified, and unclaimed person cases across the country. It is funded and administered by the National Institute of Justice and managed in partnership with the UNT Health Science Center's UNT Center for Human Identification through a cooperative agreement.

---

All NamUs services are provided at no cost.

---

The sheer volume of missing and unidentified person cases poses one of the greatest challenges to agencies tasked with resolving these important cases.







### Quick Search

MISSING UNIDENTIFIED

NamUs Number  
MP123, MP-123, 123

First Name

Last Name

State  
Select State

County  
Enter County

Reset

Search

### Contact NamUs

Your Regional System Administrator is  
Rachel Allen  
rsal@namus.gov

### 1 to 25 of 209 Region Cases

Case	Date Found	Age
UP16751	05/24/2012	75
UP5907	07/11/1985	75
UP9011	03/21/2011	65
UP6081	12/22/1975	65
UP9188	08/20/2011	65
UP9655	05/03/2004	65
UP1752	01/26/2008	64
UP2742	08/03/1999	60
UP1515	12/07/1979	60
UP5954	03/25/2002	60
UP7561	02/26/2010	60
UP7111	01/02/2010	55
UP3149	11/18/2002	55
UP880	08/23/2006	52
UP1892	02/10/2006	50
UP897	12/01/2007	50
UP4900	02/18/1981	50
UP8458	07/26/1992	50
UP2610	06/20/1984	50

# NamUs Technology

---

**T**he NamUs application contains a secure, easy-to-use, centralized online database that serves as a national clearinghouse of information related to missing, unidentified, and unclaimed person cases.

Case management, advanced searching, and automatic matching tools within the NamUs application expedite case associations and resolutions.

The NamUs database is searchable by anyone. However, sensitive case data are only accessible to appropriate, vetted professional users, which include medical examiners, coroners, law enforcement officers, and allied forensic professionals.

**Sensitive case data are only accessible to appropriate, vetted professional users.**

# Regional Program Specialists

---

## **R**egional Program Specialists:

- Provide investigative support to missing, unidentified, and unclaimed person cases.
- Vet all professional users and case data to ensure the accuracy, quality, and security of information entered into NamUs.
- Assist with the collection of biometric information and facilitate the use of NamUs forensic services.
- Provide online and classroom training on the NamUs application and resources.
- Assist with the coordination and implementation of Missing Person Day events across the country.
- Hold Department of Justice security clearances and are experienced professionals from the criminal justice and/or forensic science community.





# Forensic Services

---

## Fingerprints

---

Fingerprints are a widely recognized and cost-effective biometric marker. They are a reliable means of personal identification that enable rapid comparisons. When submitted to NamUs, fingerprints are immediately available for comparisons that can result in positive identifications or exclusions.

---



**T**he NamUs Fingerprint/AFIS Unit assists with scanning, classifying, uploading, analyzing, and comparing fingerprint information submitted to NamUs.

All fingerprint images provided to NamUs are digitized and uploaded to an internal Automated Fingerprint Identification System (AFIS) for searching and comparison. All unidentified decedent prints are then submitted to the FBI's Latent Print Unit for searching in the Next Generation Identification (NGI) national database.

NamUs provides pre-paid shipping labels to submit fingerprint cards for processing, and all fingerprint cards will be returned to the submitting agency after upload to NamUs.



Candidate Candidate List Image View Help

View TP Candidates

Single pair view Mughshot info Close pair view Multiple pair view

Previous Pair Next Pair

Confirm Yes Confirm No

Prev Cand Next Cand

End Trans Next Trans

Analysis Return

TP/PP Verification Transaction Queue

Viewing pair FP / score: 9 / 9 3010

ID-ST002T180320004 H-1, Q-13, M-50, P-W, D4

ID-ST002T180320004 H-1, Q-13, M-45, P-U, G4

Rank	Orig. rank #2	Searched pair #1 / score	#2 FP / score	#3 FP / score	#4 FP / score	#5	#6	#7	#8	#9	#10
	5	5	12	12	17	17	17	17	17	17	17

16 Listed LOCALBYOLDREGION CAPIS Database

Trans. No.	State Cat.	Comp. State	Priority	Start Time	End Time	User	Original Rank	AFIS No.	FP1	Score1	FP2	Score2	Flag	Status
ST002T180320004	TP	Completed - H confirmed	20	3/28/2018 11:12:5	3/28/2018 11:13:2	WBU	001	10001627C1	5	3783	12	3202	F	
ST002T180320011	TP	TP Completed	20	3/27/2018 2:59:33	3/27/2018 2:59:19	WBU	002	51002115071500045	5	3783	12	3202	F	
ST002T1803270010	TP	TP Completed - H confirmed	20	3/27/2018 2:43:20	3/27/2018 2:47:18	WBU	003	10001026C1	5	3783	12	3202	F	
ST002T1803270009	TP	TP Completed	20	3/27/2018 2:23:05	3/27/2018 2:25:32	WBU	004	1000193C1	13	204	17	209	F	
ST002T1803270008	TP	TP Completed	20	3/27/2018 2:17:51	3/27/2018 2:18:13	WBU	005	M0005755	8	294	5	185	F	
ST002T1803270007	TP	TP Completed	20				006						F	

FP unknown 17/20 Page Info 5/20 Local Subregion Wilcox Bailey

DELL

...ATION

...SIS

...BY

Taken by: \_\_\_\_\_

Trans. No. \_\_\_\_\_

Trans. No.	State Cat.	Comp. State	Priority	Start Time	End Time	User	Original Rank	AFIS No.	FP1	Score1	FP2	Score2	Flag	Status
ST002T180320004	TP	Completed - H confirmed	20	3/28/2018 11:12:5	3/28/2018 11:13:2	WBU	001	10001627C1	5	3783	12	3202	F	
ST002T180320011	TP	TP Completed	20	3/27/2018 2:59:33	3/27/2018 2:59:19	WBU	002	51002115071500045	5	3783	12	3202	F	
ST002T1803270010	TP	TP Completed - H confirmed	20	3/27/2018 2:43:20	3/27/2018 2:47:18	WBU	003	10001026C1	5	3783	12	3202	F	
ST002T1803270009	TP	TP Completed	20	3/27/2018 2:23:05	3/27/2018 2:25:32	WBU	004	1000193C1	13	204	17	209	F	
ST002T1803270008	TP	TP Completed	20	3/27/2018 2:17:51	3/27/2018 2:18:13	WBU	005	M0005755	8	294	5	185	F	
ST002T1803270007	TP	TP Completed	20				006						F	



# Forensic Services

---

## DNA Analyses

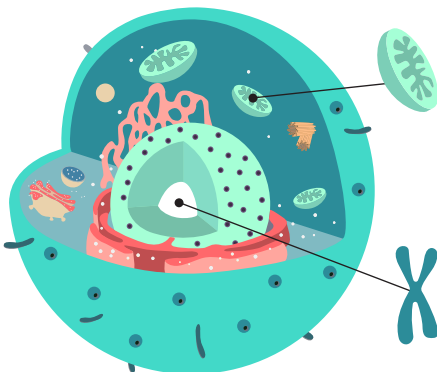


**N**IJ, through the NamUs program, provides funding and support for the UNT Center for Human Identification's (UNTCHI's) Missing Persons Unit to perform nuclear DNA testing, including Y-STR, and mitochondrial DNA analyses for missing and unidentified persons cases from around the country. UNTCHI is a recognized ISO accredited CODIS laboratory, and one of a small number of laboratories capable of developing and uploading mitochondrial DNA profiles to CODIS.

---

## Nuclear VS mtDNA

---



Mitochondrial DNA (mtDNA) is found in the cell's mitochondria and contains genetic material inherited from the maternal lineage. mtDNA is an important forensic tool, especially when first-order relatives are not available for a missing person, or nuclear DNA profiles cannot be obtained from unidentified remains.

Nuclear DNA is found in the cell's nucleus and can be used to develop STR and Y-STR profiles for the identification of human remains. STR profiles are developed from genetic material contributed by both parents, while Y-STR profiles are developed from genetic material inherited only from the paternal lineage.









# Forensic Services

---

## Forensic Odontology

---

Law enforcement, medical examiners, and coroners rely on dental records to establish legal and verifiable identifications of missing and unidentified persons. Dental records provide an opportunity to make rapid, cost-effective, detailed comparisons between individuals for inclusions or exclusions of potential matches.

---



**A**gencies can directly upload dental information for missing and unidentified person cases to NamUs, which is a secure, central repository. NamUs forensic odontologists also can be contacted to digitally scan, code, and upload information to NamUs cases on behalf of investigating agencies. All dental information uploaded to NamUs is available for 24/7 professional comparisons.

NamUs odontologists also complete NCIC dental worksheets that allow agencies to upload accurate and complete dental information to NCIC.

NamUs provides pre-paid shipping labels to submit dental information for processing, and all records will be returned to the submitting agency after upload to NamUs.

# Forensic Services

---

## Forensic Anthropology



**N**IJ, through the NamUs program, provides funding and support for UNTCHI's Forensic Anthropology Unit to provide the following analyses of skeletal remains to investigating agencies:

- Distinguishing historical/archaeological remains from modern remains.
- Development of biological profiles – such as sex, ancestry, stature, and age – to aid searches for possible matches.
- Identifications of skeletal remains based on comparisons of medical and radiographic information.
- Trauma analysis to contribute to cause and manner of death determinations.











# Analytical Services

---

**T**he NamUs Analytical Division utilizes nongovernmental criminal justice databases and advanced search techniques to provide criminal justice agencies with:

- Indication of life for persons reported missing to NamUs.
- Contact information for family members for DNA sample collections.
- Information regarding next of kin for death notifications.
- Leads related to unidentified person cases.
- Information to assist in vetting tips and leads.

**NamUs analytical services help resolve missing, unidentified, and unclaimed person cases.**



# Research and Data

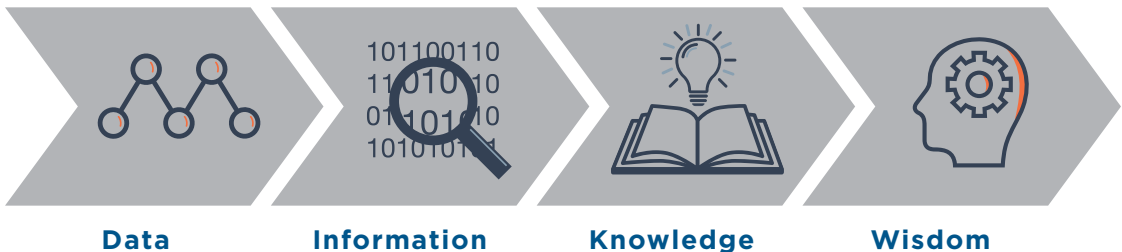
---

## Data Analytics

---

By transforming data into actionable intelligence and knowledge, data analytics advances research, development, and evaluation efforts to address the challenges faced by the communities NamUs serves. NamUs data analytics projects identify meaningful patterns in case data to develop new outreach and awareness initiatives, best practices, and additional tools and resources for NamUs stakeholders.

---



## Research and Evaluation

---

The NamUs Research and Evaluation Division develops and implements research projects that utilize NamUs, external data sources, and primary data collection to better understand missing, unidentified, and unclaimed person issues and develop system improvements. Research focuses on specific issues, such as indicators of violence in missing and unidentified person cases, as well as specific missing person populations.

---

# Victim Services

---

**T**he Victim Services Division facilitates comprehensive and compassionate recovery-oriented services to victims and their families, while fostering education and awareness, through:

- Resource referrals for support groups and mental health care.
- Peer networking to connect families with trained volunteers who provide guidance and support based on shared experiences.
- Outreach and education materials.
- Reunification services to return deceased loved ones home, including support with exhumations, transportation, and re-interment.

**The NamUs Victim Services Division provides referrals, connections, and support to victims and families of missing loved ones.**





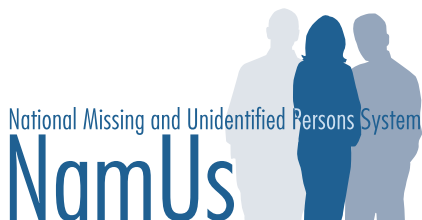


# Register and enter cases into NamUs:

---

To enter a case or access any of the free resources available through NamUs, register at [NamUs.gov](https://NamUs.gov).

Once registered, a user-friendly case entry form is just one click away.



For questions or further assistance, contact NamUs toll-free at 1-855-626-7600.

NamUs is funded and administered by the National Institute of Justice and managed in partnership with the UNT Health Science Center's UNT Center for Human Identification through a cooperative agreement.



The NamUs program is funded through the National Institute of Justice, Office of Justice Programs, U.S. Department of Justice Award No. 2016-MU-BX-K007. The opinions, findings, and conclusions or recommendations expressed in this publication are those of the author(s) and do not necessarily reflect those of the Department of Justice.