

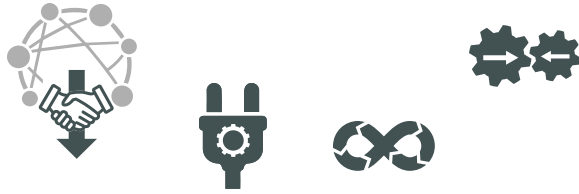


Network Security Reference Architecture

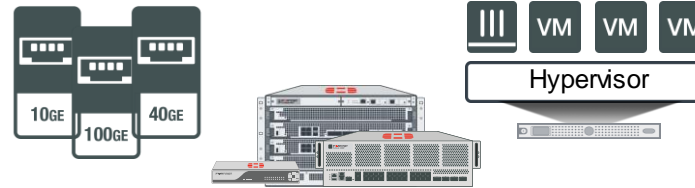
Alex Samonte – Director of Technical Architecture

Network Security Architecture Components

Open Ecosystem



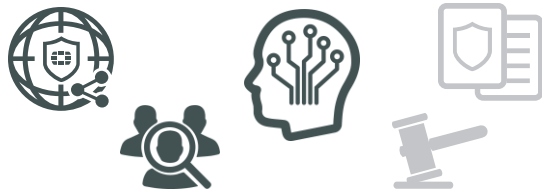
Scalable Multi-Formfactor



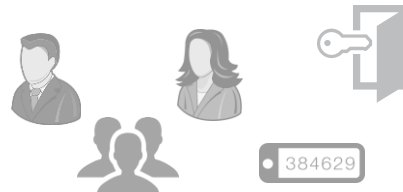
Network & Security Operations & Analytics



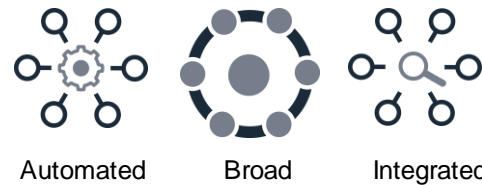
Security Intelligence



Identity & Access Management



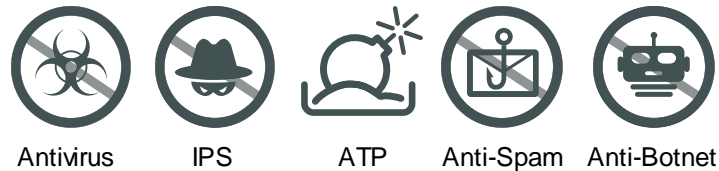
Advanced Response



Networking Flexibility



Threat Protection



Antivirus IPS ATP Anti-Spam Anti-Botnet

Content Visibility

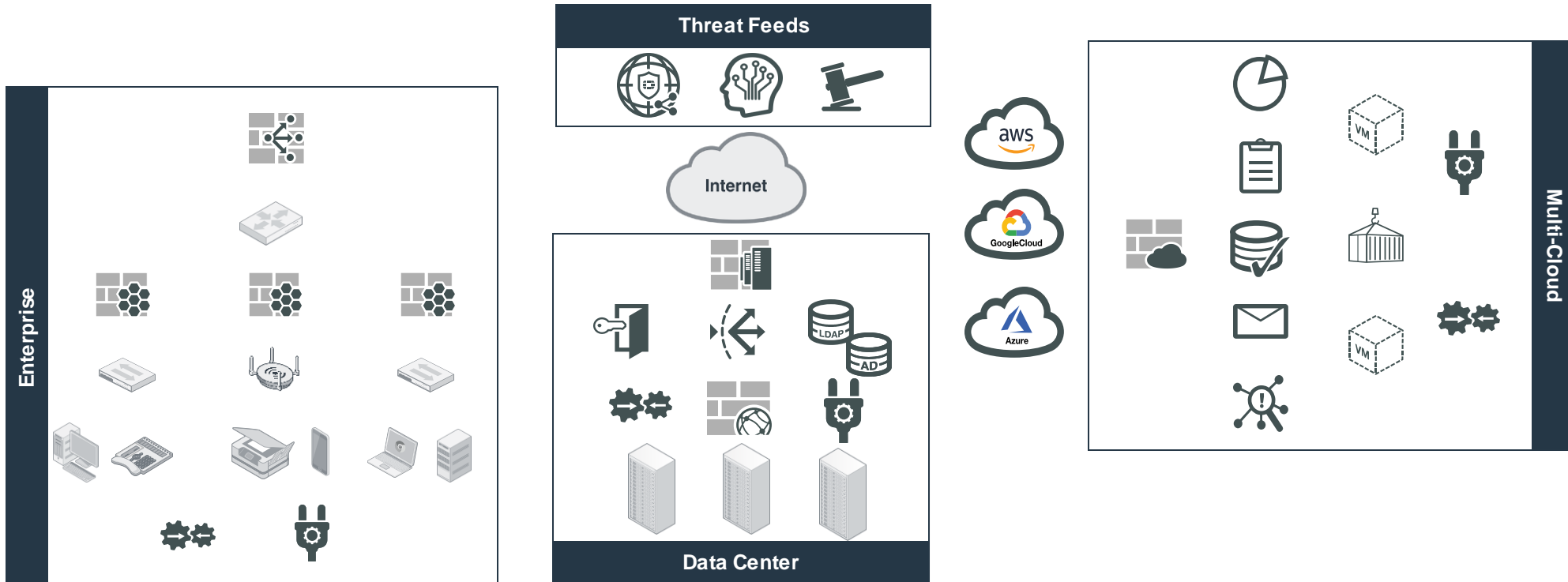


SSL Inspection Reputation App Control Content Filter

Network Security Critical Capabilities

- Threat Protection
- Content Visibility
- Identity & Access Management
- Security Intelligence
- Advanced Response (customization, automation)
- Networking Flexibility
- Network & Security Operations & Analytics
- Scalable Multi-Formfactor
- Open Ecosystem

Network Security Reference Architecture



Threat Protection

- Antivirus
- IPS
- ATP
- Anti-Spam
- Anti-Botnet

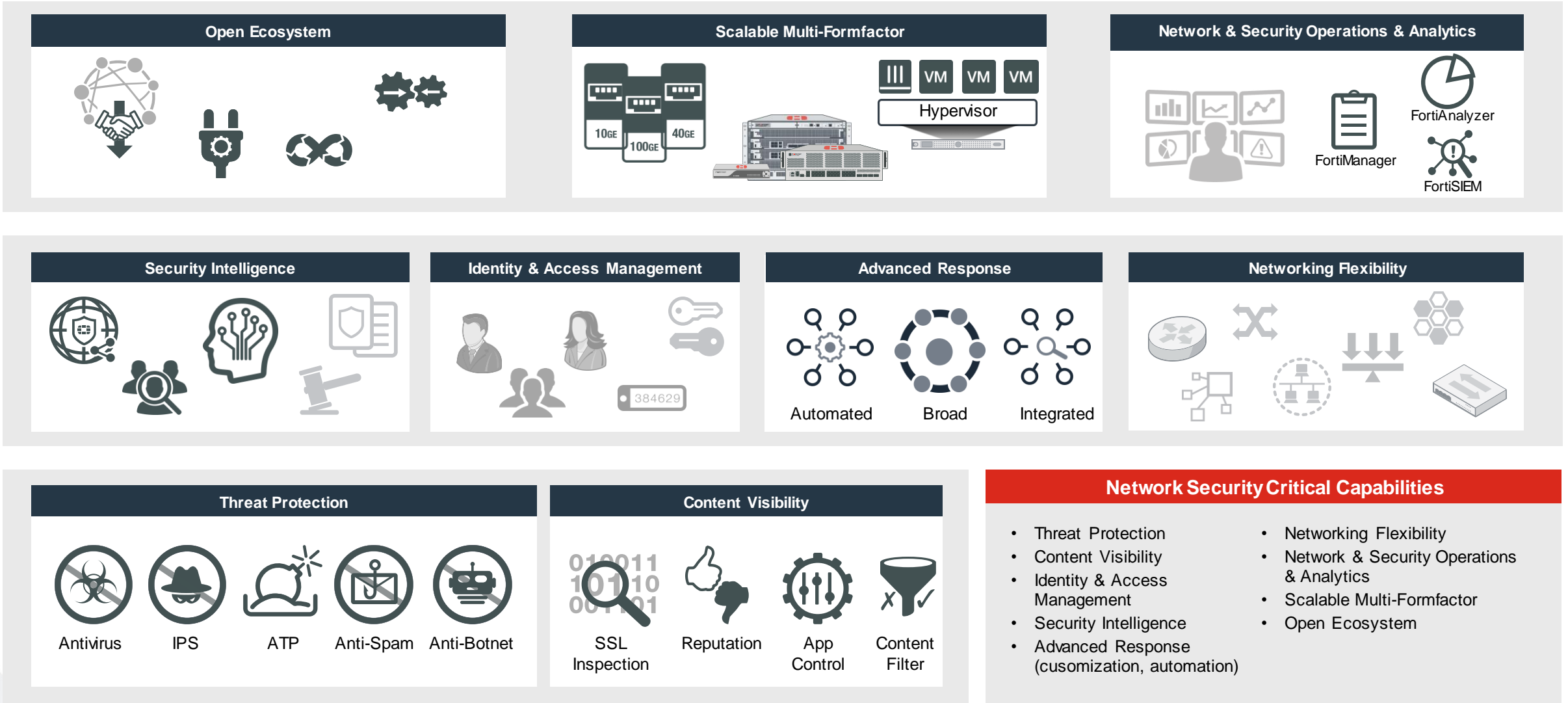
Content Visibility

- SSL Inspection
- Reputation
- App Control
- Content Filter

Network Security Critical Capabilities

- Threat Protection
- Content Visibility
- Identity & Access Management
- Security Intelligence
- Advanced Response (customization, automation)
- Networking Flexibility
- Network & Security Operations & Analytics
- Scalable Multi-Formfactor
- Open Ecosystem

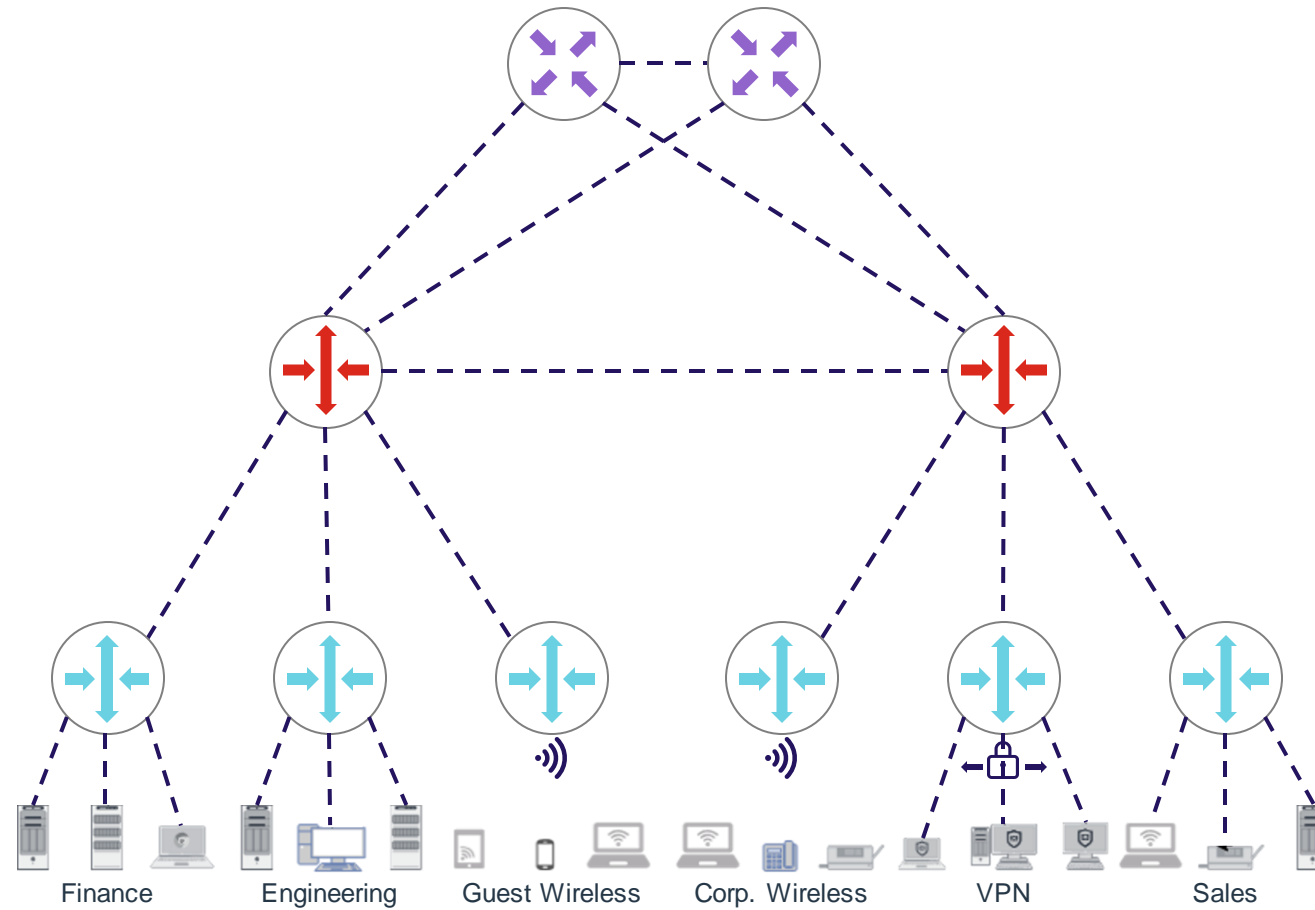
Fortinet Network Security Architecture Components



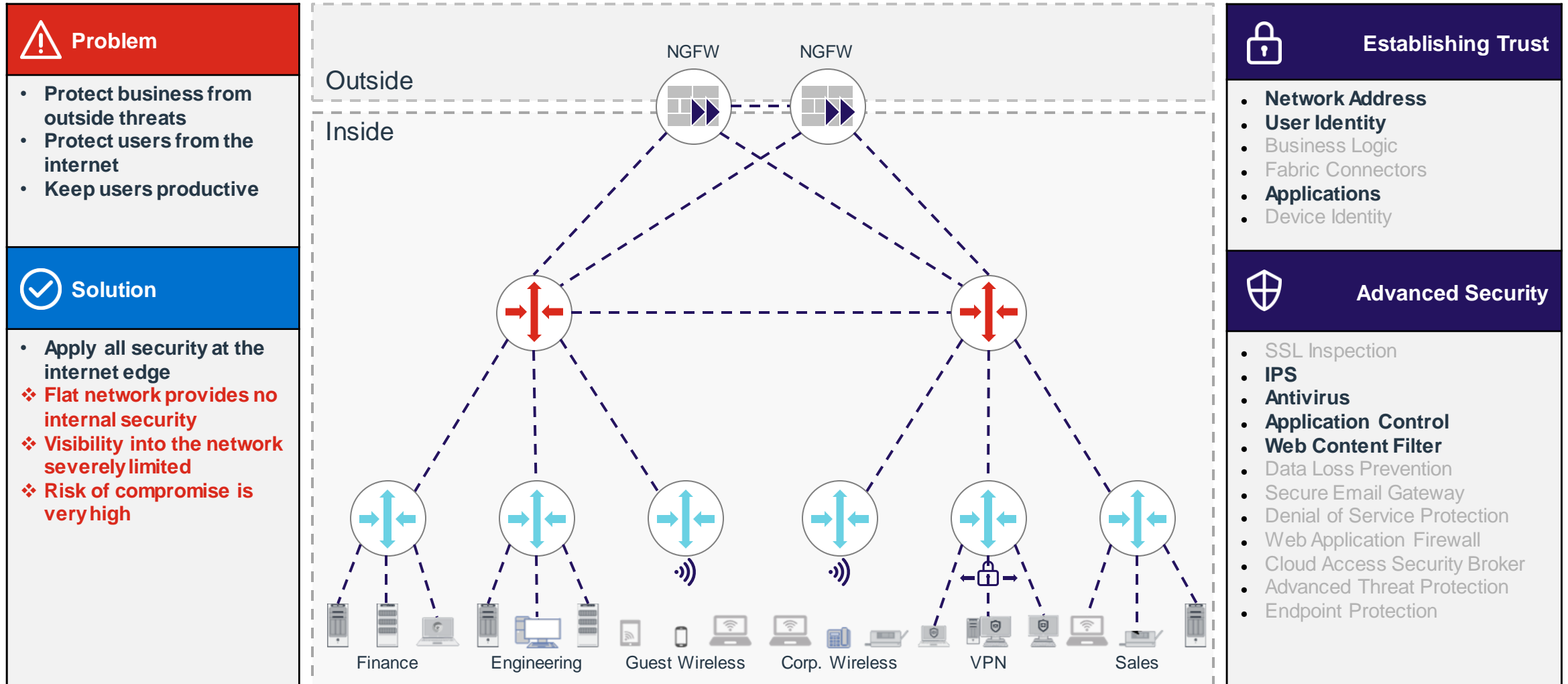
Segmentation Architectures

Use Cases Summary

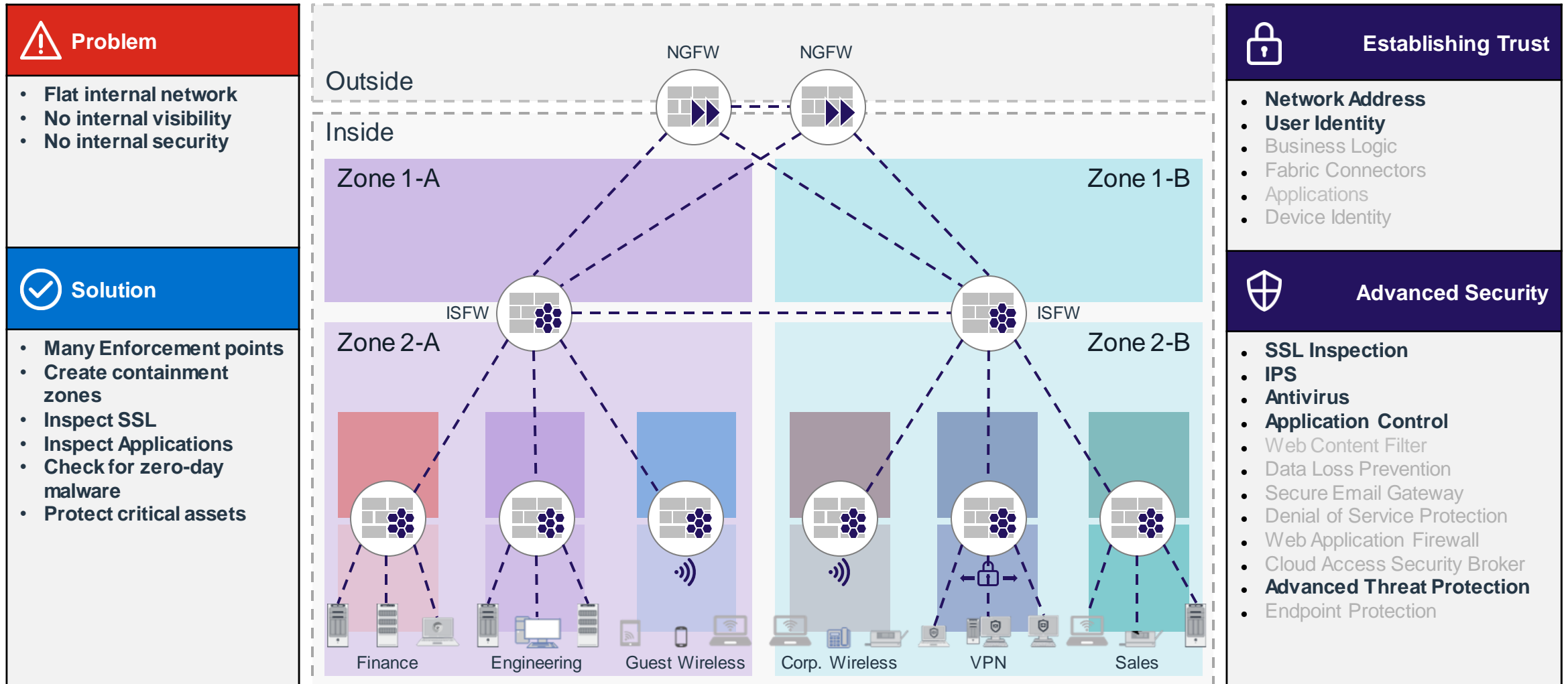
Segmentation Architectures



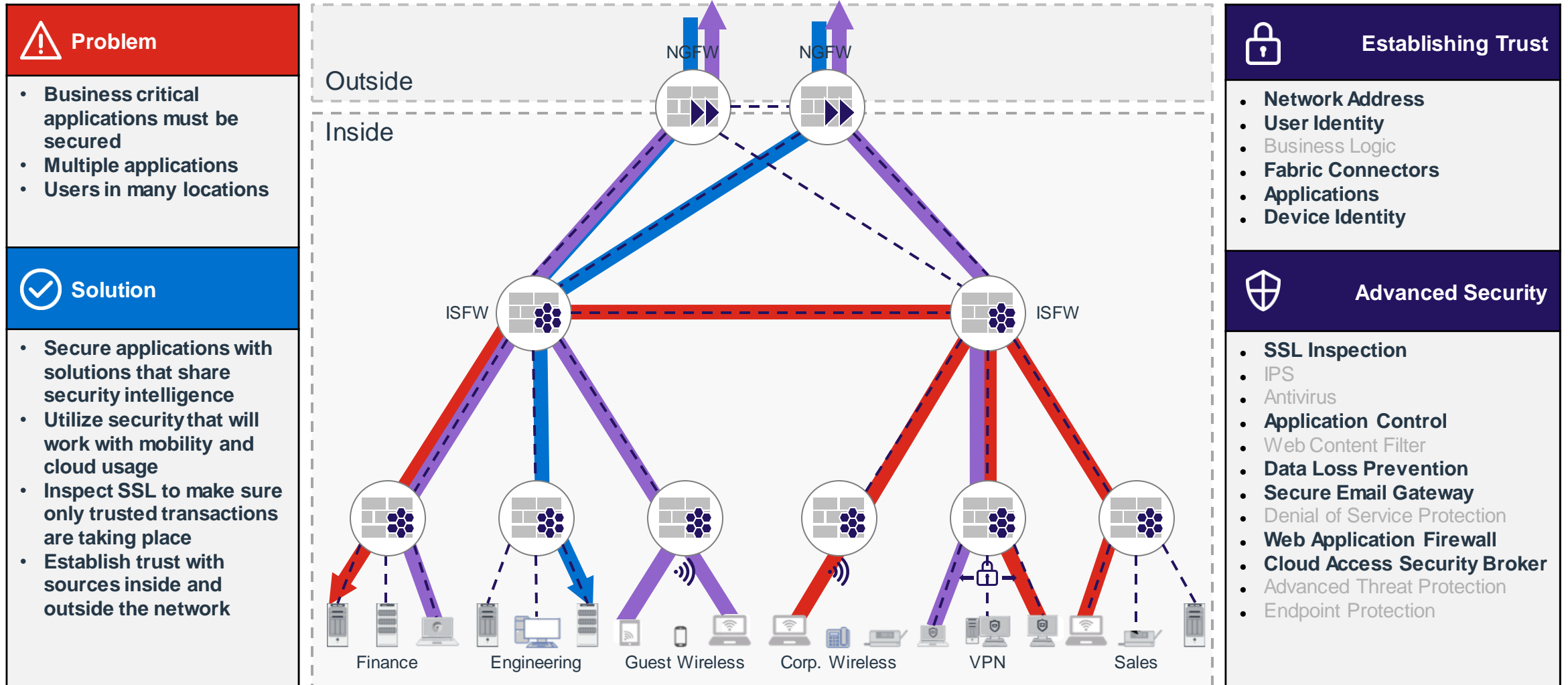
Today – Border Security



Use Case – Reducing Attack Surface



Use Case – Trusted Application Integrity



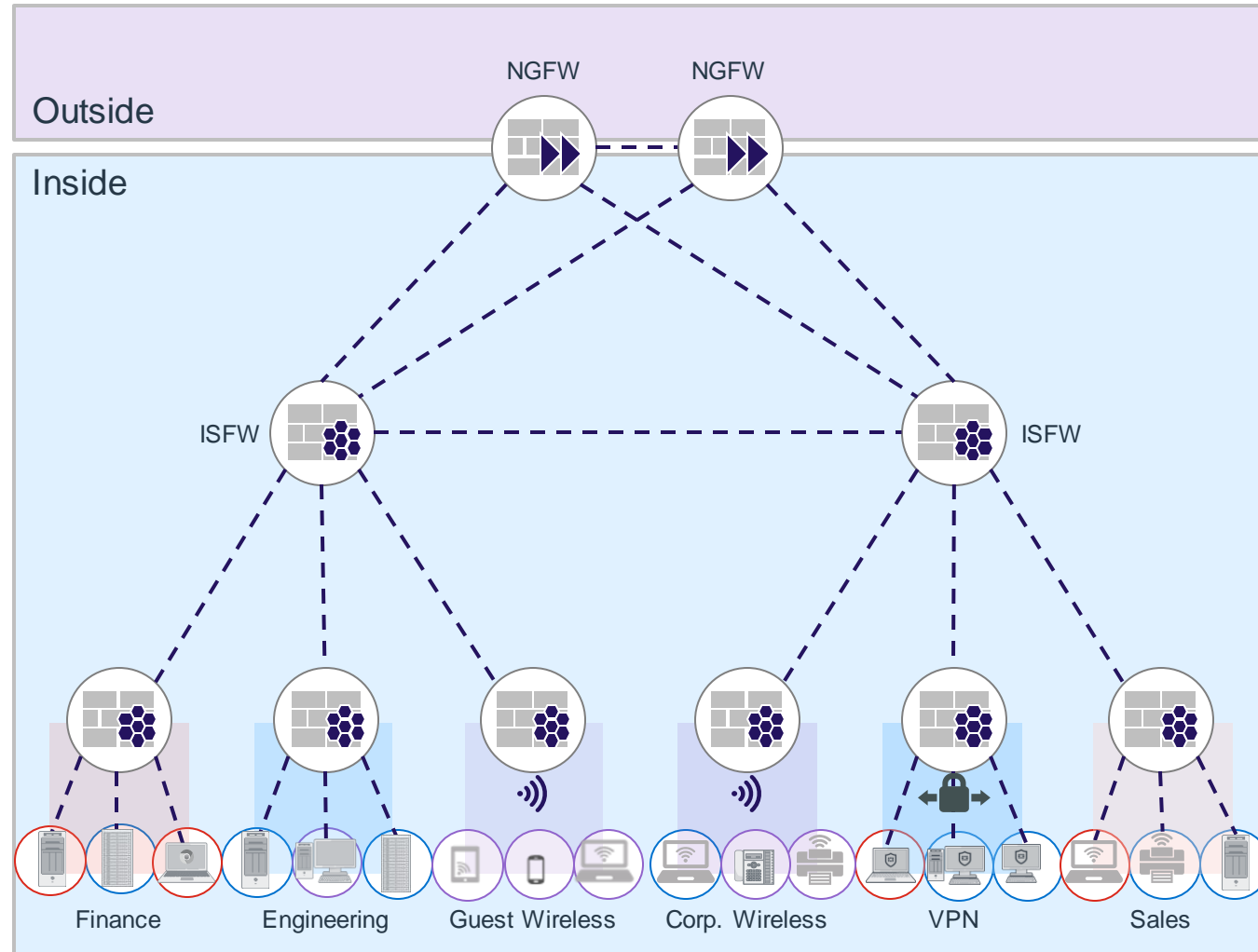
Use Case – Achieving Compliance

Problem

- Enforcing regulated access
- Does not follow standard network boundaries
- Critical compliance policies

Solution

- Multiple enforcement point locations
- Endpoint coverage for specific needs
- Network coverage for IoT
- Visibility for audits
- Keep critical systems running



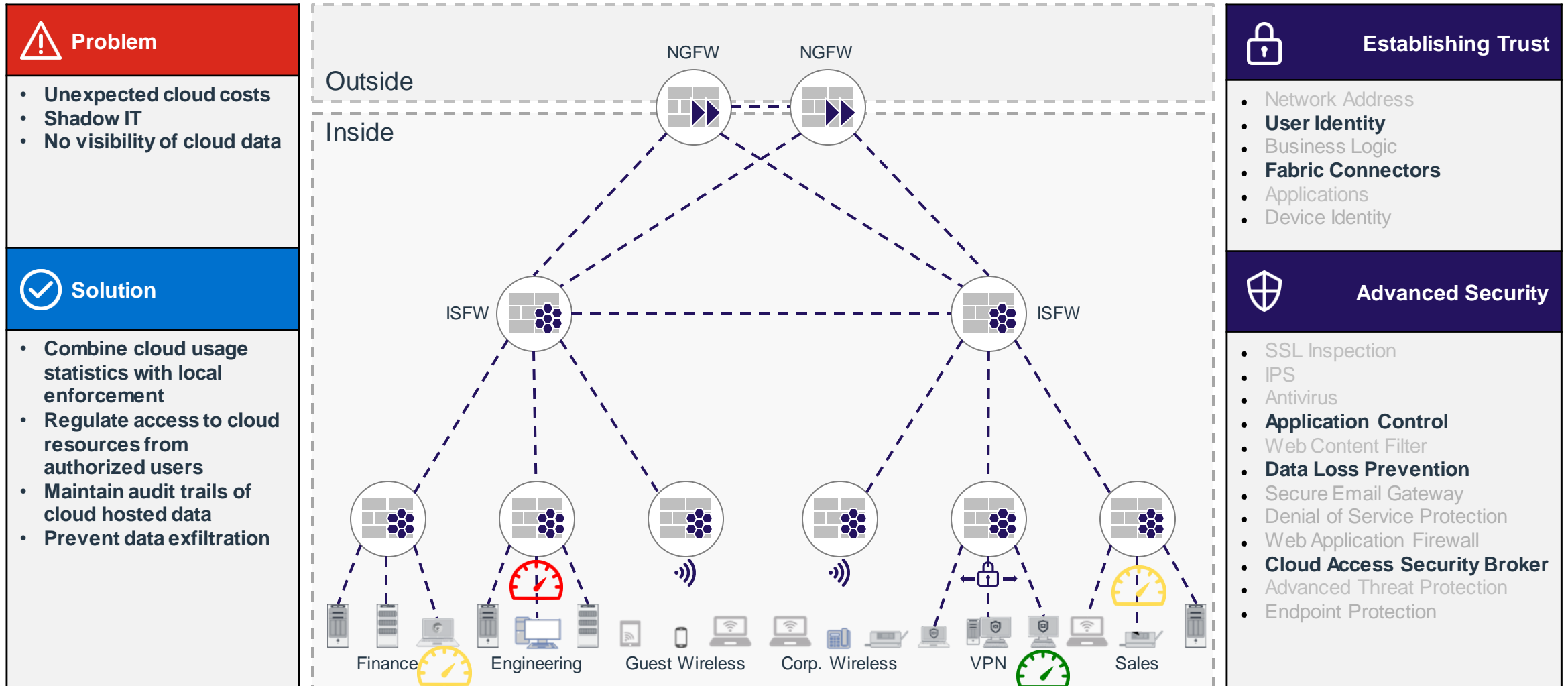
Establishing Trust

- Network Address
- **User Identity**
- **Business Logic**
- Fabric Connectors
- Applications
- **Device Identity**

Advanced Security

- **SSL Inspection**
- IPS
- Antivirus
- Application Control
- Web Content Filter
- **Data Loss Prevention**
- Secure Email Gateway
- **Denial of Service Protection**
- Web Application Firewall
- Cloud Access Security Broker
- **Advanced Threat Protection**
- **Endpoint Protection**

Use Case – Tiered Cloud Access



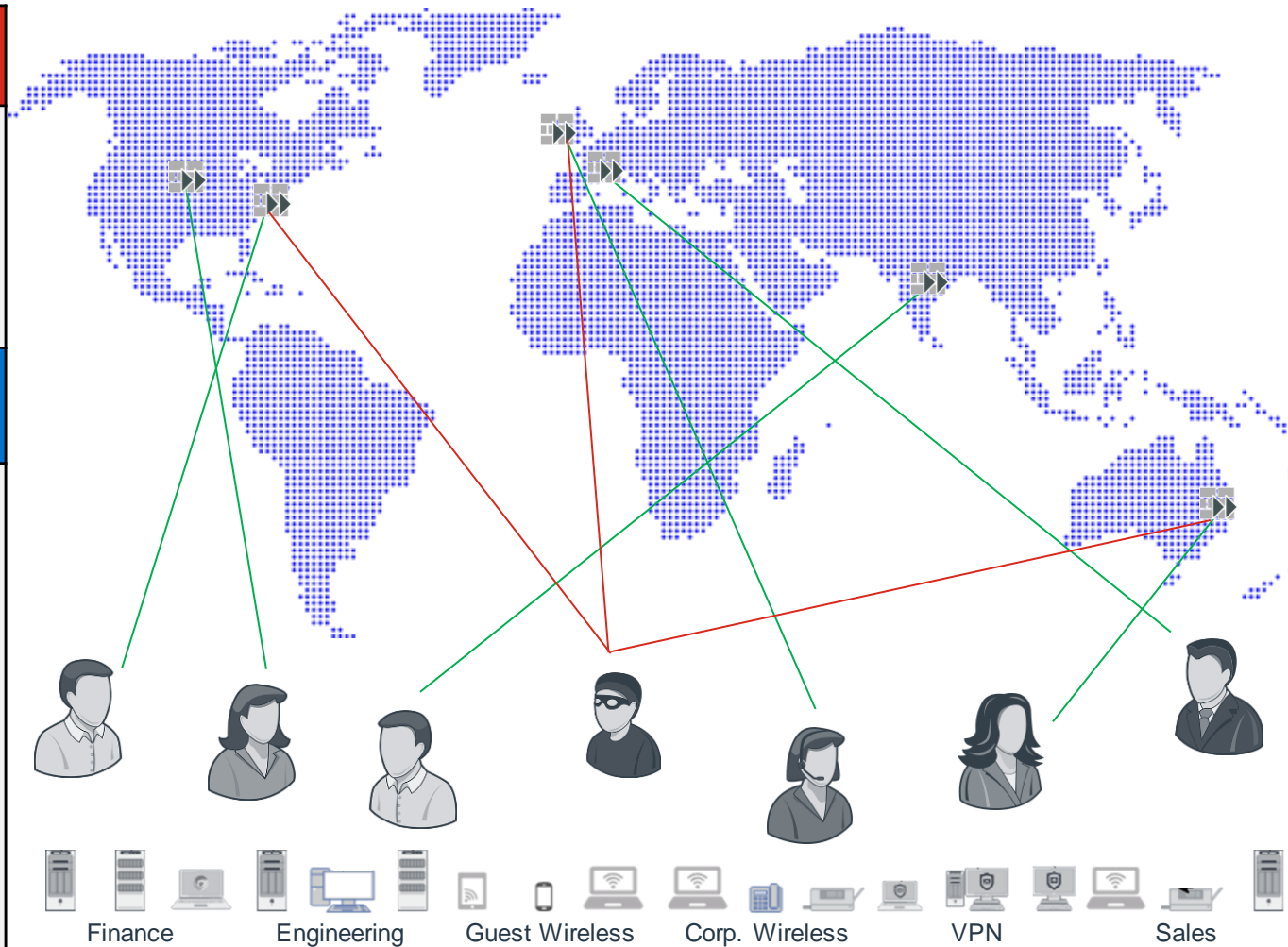
Use Case – Secure Physical Access

Problem

- Securing global employee presence
- Different systems control different aspects of security

Solution

- Integrate different trust sources
- Correlate physical location token information with network login location
- Maintain identity and device interrelationships
- Prevent targeted attacks



Establishing Trust

- Network Address
- **User Identity**
- Business Logic
- **Fabric Connectors**
- Applications
- **Device Identity**

Advanced Security

- SSL Inspection
- **IPS**
- **Antivirus**
- **Application Control**
- Web Content Filter
- Data Loss Prevention
- Secure Email Gateway
- Denial of Service Protection
- **Web Application Firewall**
- Cloud Access Security Broker
- **Advanced Threat Protection**
- Endpoint Protection

FORTINET®