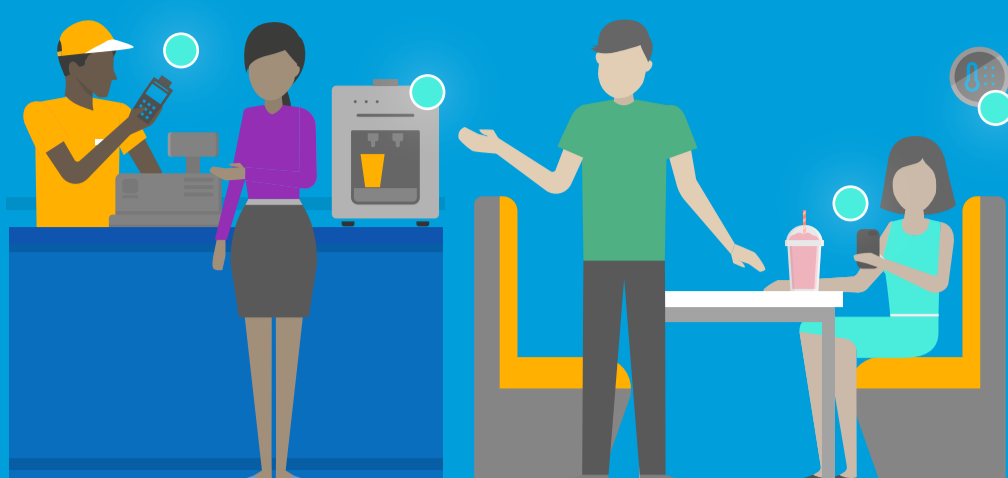
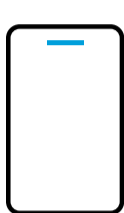


Business runs on connectivity

AT&T gives you the power to choose a range of solutions that works best for your business.



Internet connectivity offering high-reliability and low-latency



Mobility solutions that help businesses thrive



5G that lets more data move faster

High availability robust network

9.5 million

business customer locations within 1,000 feet of our fiber

Nearly

2.5 million

business customers as of 3Q22

AT&T global network carries

553 petabytes

of data traffic on an average day (as of 3Q22)

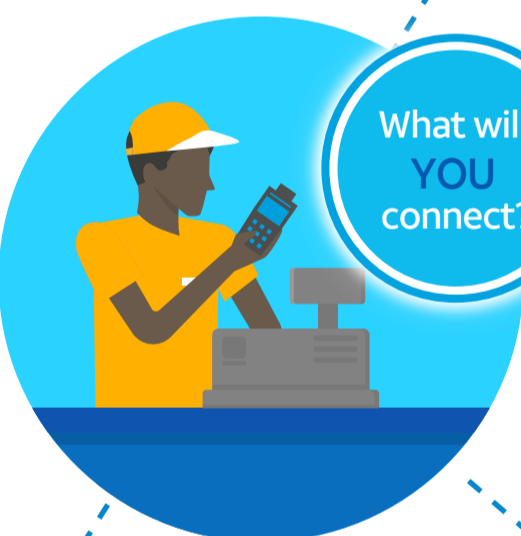
We bring connectivity for the next wave of innovation with



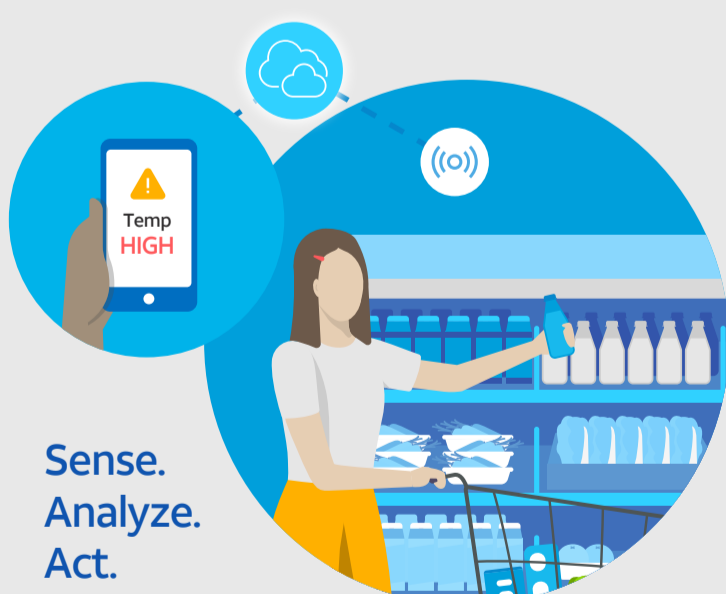
accessible Cloud, Edge and IoT solutions

end-to-end support, and security at every layer

When you securely connect people, equipment, and environments...



What will YOU connect?



Sense. Analyze. Act.

...you're ready to do the right thing at the right time

for your business, and for your customers



To learn more about how to get AT&T connectivity and IoT solutions working for your business, visit <https://www.att.com/retail>