

New CE income tax estimates

Aaron E. Cobet

Division of Consumer Expenditure Survey
CE Microdata User's Workshop
July 15-17, 2015



www.bls.gov

Overview

- ▶ Introduction of CE income taxes
- ▶ Comparison to other tax estimates
- ▶ Getting started
- ▶ Data uses

What changed?

What changed?

- ▶ CE introduced estimates for federal and state income tax liabilities in 2013.
- ▶ Prior to 2013, CE collected this information.

**Why did CE develop
income tax estimates?**

Reliability issues

- ▶ Privacy concerns
- ▶ Problems remembering taxes
- ▶ Problems computing taxes

Reliability issues

**Are the estimates better
than the collected data?**

Reliability issues

Yes

- ▶ Model obtains input from readily available sources
- ▶ Model tested since the seventies

How does CE estimate the tax data?

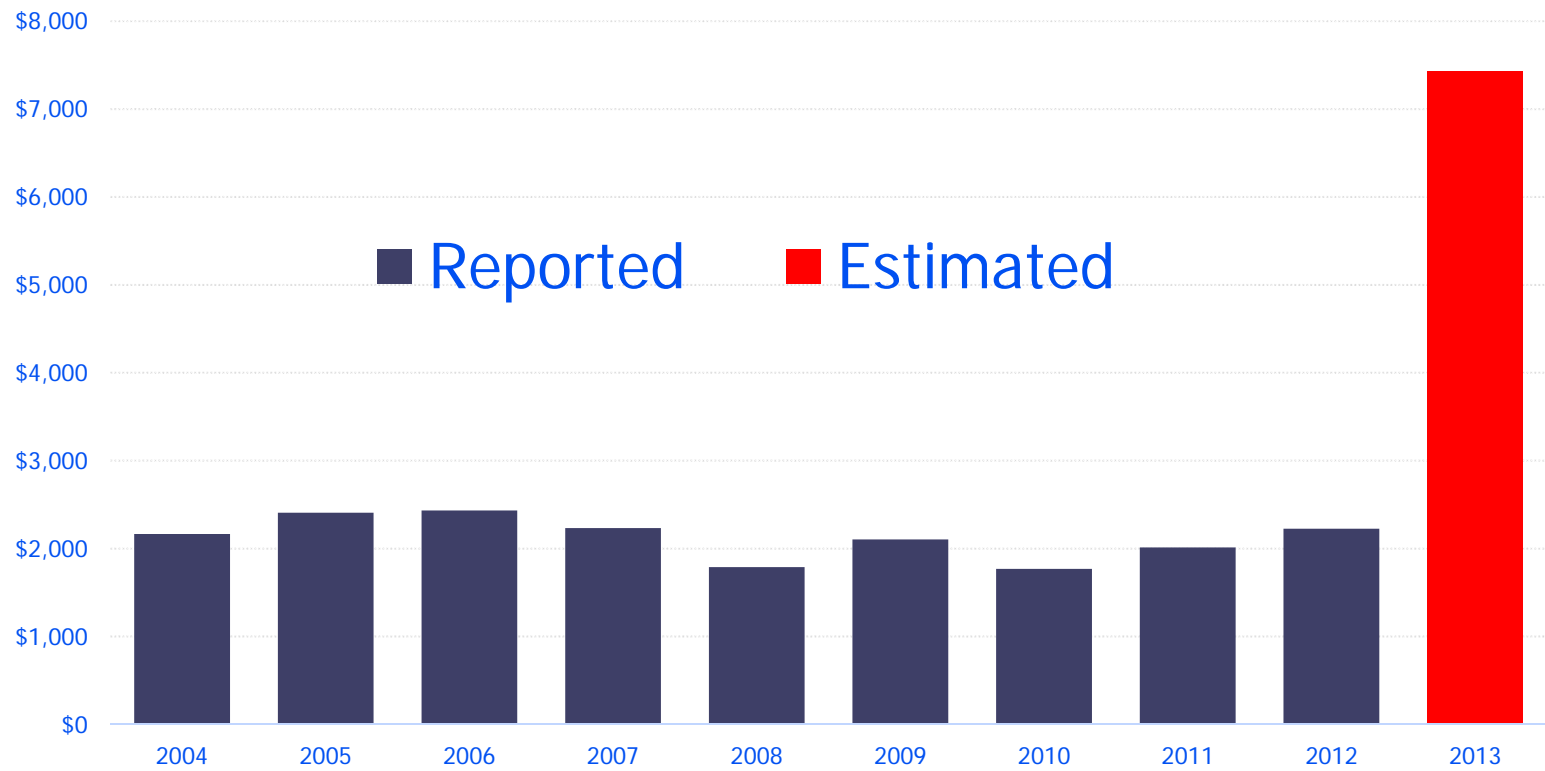
Method

- ▶ Assemble inputs
- ▶ Run TAXSIM
- ▶ Create tax files (NTAXI)

Method

**Does the new method
make a difference?**

Method



How do BLS income taxes compare to other tax data?

Comparison

▶ Focus on federal agencies

- Internal Revenue Service (IRS)
- U.S. Census Bureau (Census)
- Congressional Budget Office (CBO)

Comparison

▶ Focus on two aspect:

- Concepts
- Format

Comparison

- Tax comparison

- ▶ Name of series
- ▶ Concepts included
- ▶ Federal
- ▶ Basic unit: Household or tax return
- ▶ Method: Model or sample

Comparison

Table 1: Comparison of taxes

Concept	CE (BLS)	IRS	CPS (Census)	CBO
Name of series	Average income tax	Average income tax revenue	Household income tax	Average personal tax
Concepts included	Individual income taxes minus tax credits	Individual income revenue minus tax credits plus trust accumulation distribution	Individual income taxes minus tax credits	Individual income taxes plus payroll taxes, corporate income taxes, and excise taxes
Basic unit	Household	Tax return	Household	Household
Federal	Federal	Federal	Federal	Federal
Method	Model	Sample of actual tax returns.	Model	Model

Source: U.S. Bureau of Labor Statistics



Comparison

Table 1: Concept comparison

Concept	CE (BLS)	IRS	CPS (Census)	CBO
Name of series	Average income tax	Average income tax return	Household income tax	Average personal tax
Concepts included	Individual income taxes minus tax credits	Individual income revenue minus tax credits plus trust accumulation distribution	Individual income taxes minus tax credits	Individual income taxes plus payroll taxes, corporate income taxes, and excise taxes
Basic unit	Household	Tax return	Household	Household
Federal	Federal	Federal	Federal	Federal
Method	Model	Sample of actual tax returns	Model	Model

Source: U.S. Bureau of Labor Statistics



Comparison

- Tax format

- ▶ Basic unit: Household or tax return
- ▶ Ranked by
- ▶ Presentation by quintile or segment
- ▶ Currency
- ▶ Latest year available

Comparison

Table 2: Data format

Format	CE (BLS)	IRS	CPS (Census)	CBO
Basic unit	People living financially independent	People filing one tax return	People living in one housing unit	People living in one housing unit
Rank by	Population weighted income	Adjusted gross income	No ranking	Size-adjusted income
Present-ation	Income quintile	Income segment	No rank (microdata)	Income quintile
Currency	U.S. dollars	U.S. dollars	U.S. dollars	U.S. dollars
Year	2013	2012	2013	2011

Source: U.S. Bureau of Labor Statistics



Comparison

Table 2: Format comparison

Format	CE (BLS)	IRS	CPS (Census)	CBO
People counted	People living financially independent	People filing one tax return	People living in one housing unit	People living in one housing unit
Rank by	Population weighted income	Adjusted gross income	No ranking	Size-adjusted income
Present-ation	Income quintile	Income segment	No rank (microdata)	Income quintile
Currency	U.S. dollars	U.S. dollars	U.S. dollars	U.S. dollars
Year	2013	2012	2013	2011

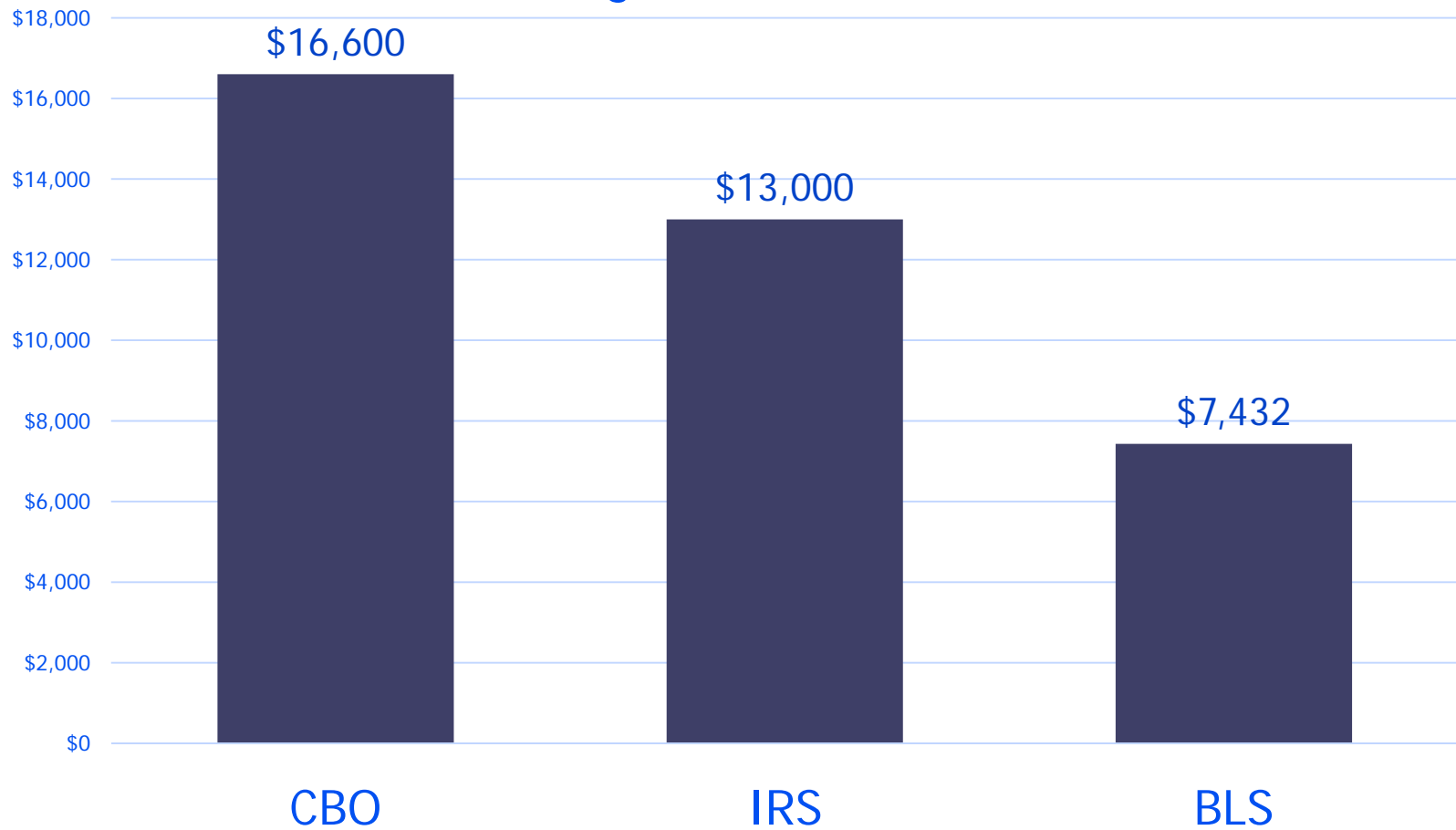


Source: U.S. Bureau of Labor Statistics

**Do the conceptual
differences make data
differences?**

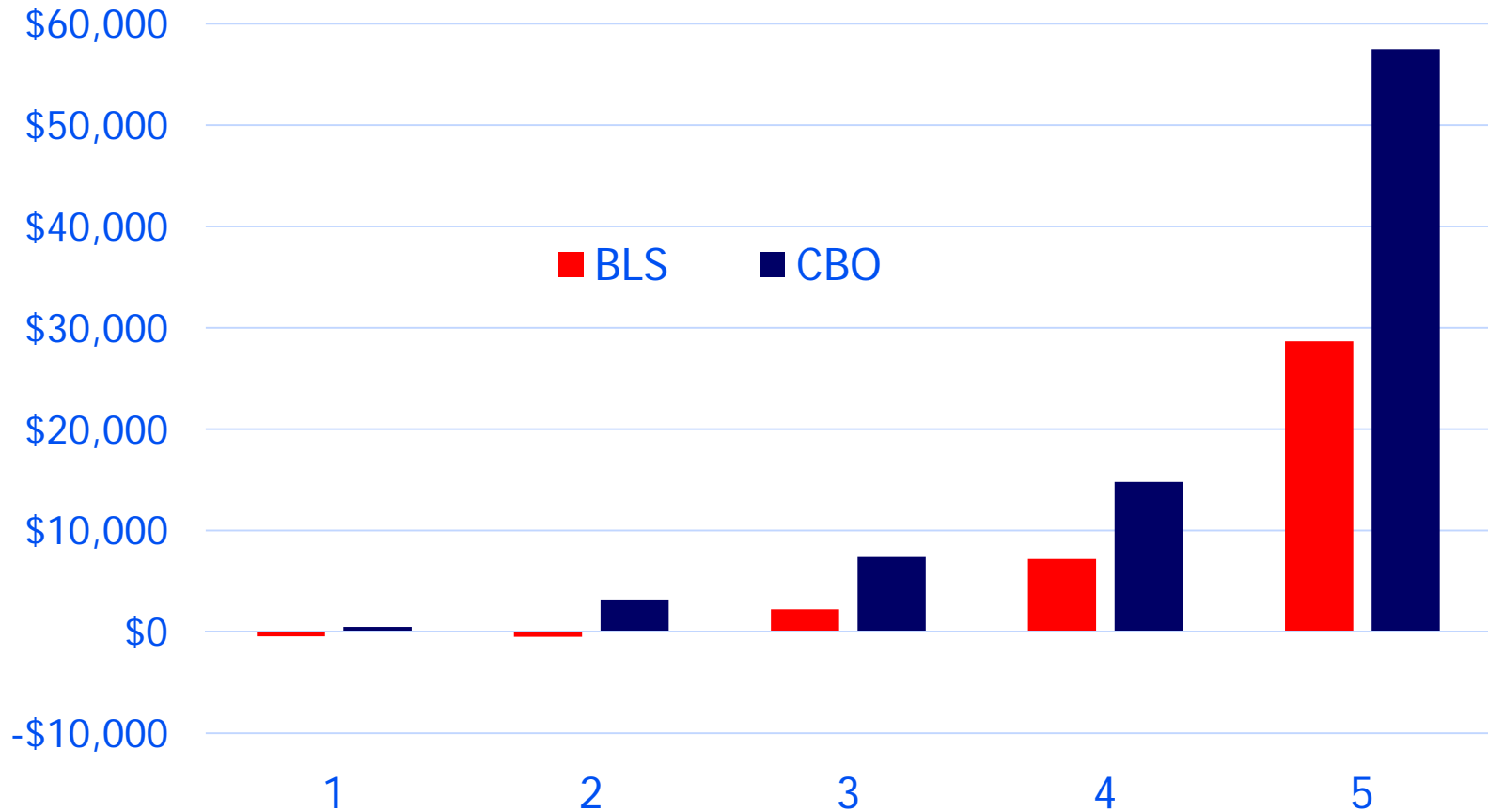
Comparison

National average of income related taxes



Comparison

Income related taxes by income quintile



How to get started?



Getting started!

▶ Where are the data?

- With Interview files
- In "NTAXI" file

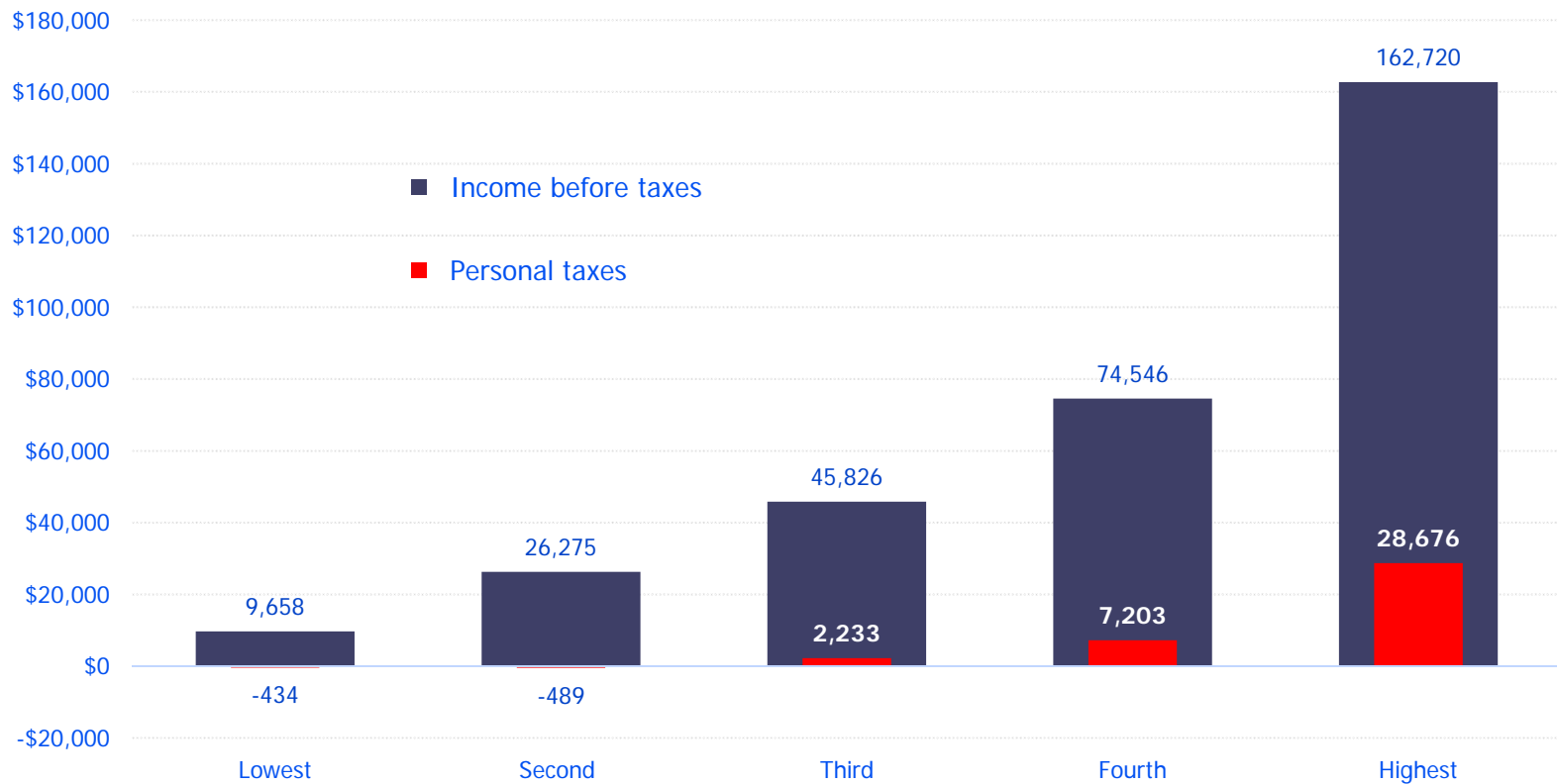
Getting started!

- What are the key variables?
 - ▶ NEWID and TAX_UNIT to connect to other information
 - ▶ FTAXO_PY and FTAXO_CY for federal taxes after credits
 - ▶ STAXO_PY and STAXO_CY for state taxes after credits
 - ▶ TAXYR_PY and TAXYR_CY for the tax year

**What can you do
with the data?**

Uses

Annual income and personal taxes per household by income quintile, U.S. dollars, 2013

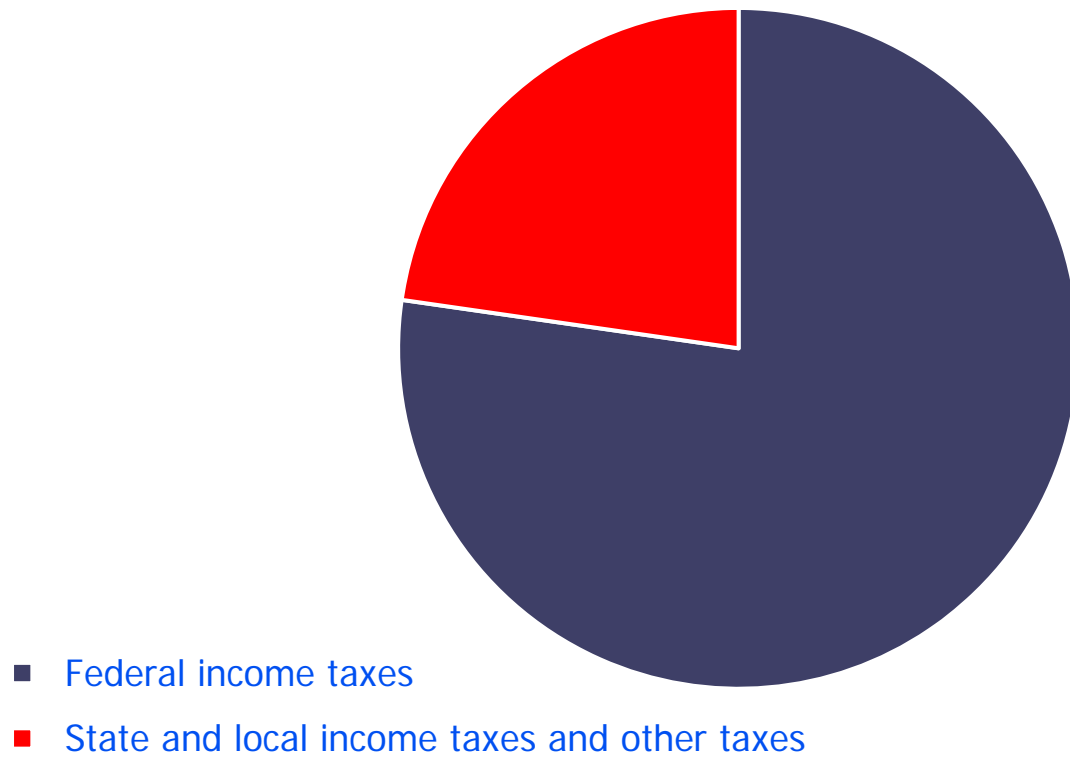


Source: U.S. Bureau of Labor Statistics.



Uses

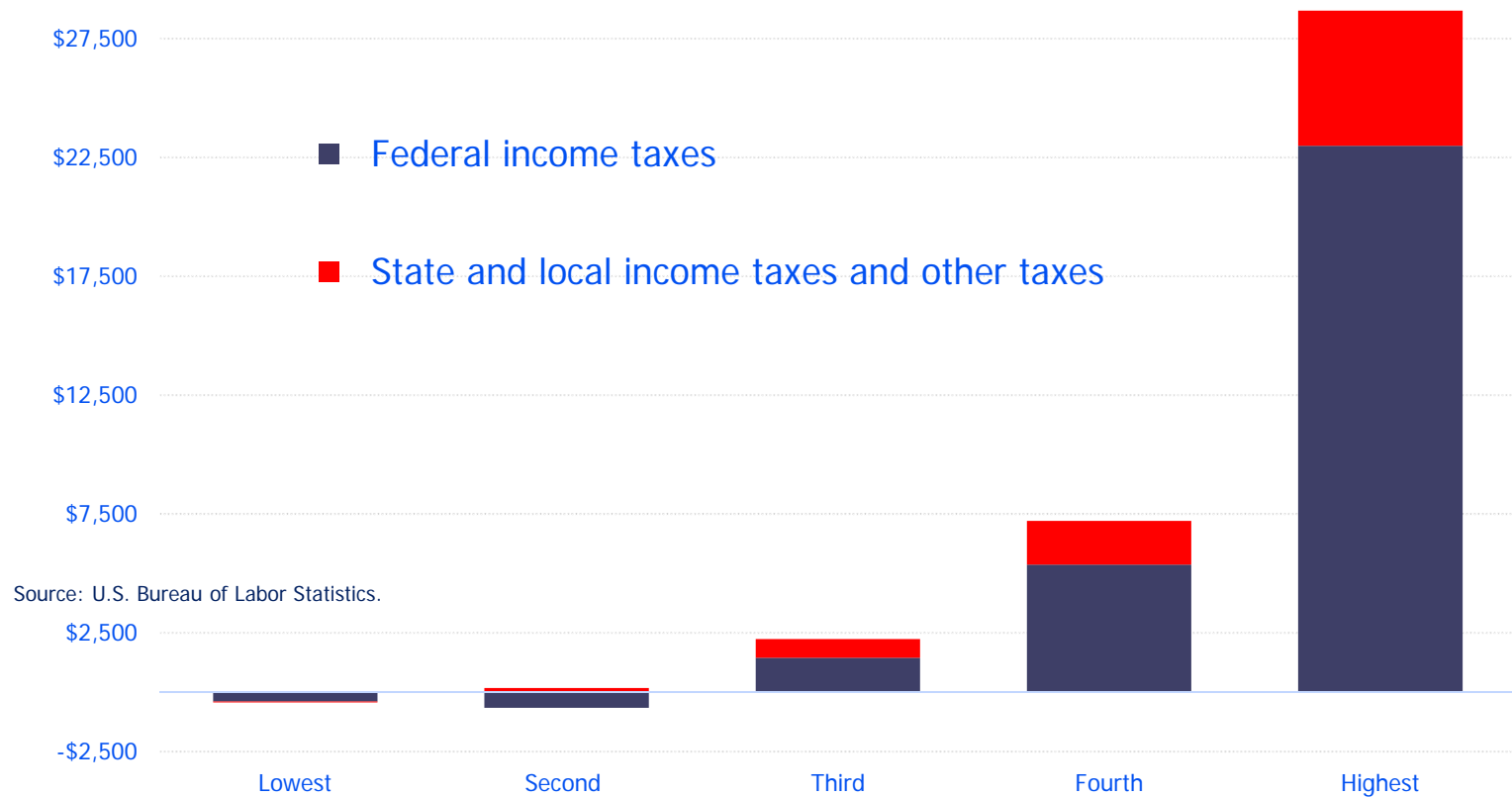
Average shares of personal taxes by households by tax type, 2013



Source: U.S. Bureau of Labor Statistics.

Uses

Personal taxes by tax type and income quintile, U.S. dollars, 2013

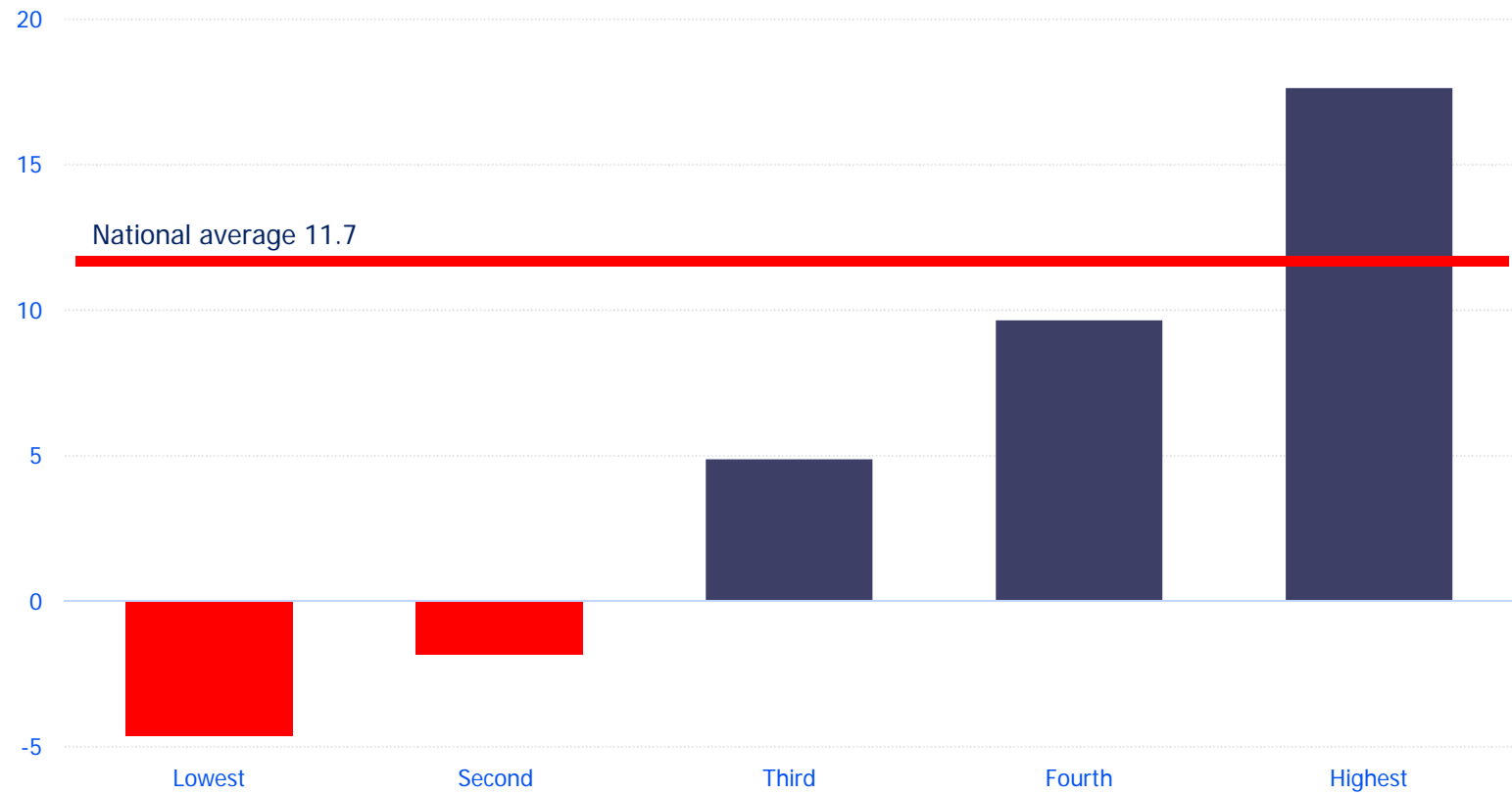


Source: U.S. Bureau of Labor Statistics.



Uses

Shares of personal taxes by income quintile, percent, 2013

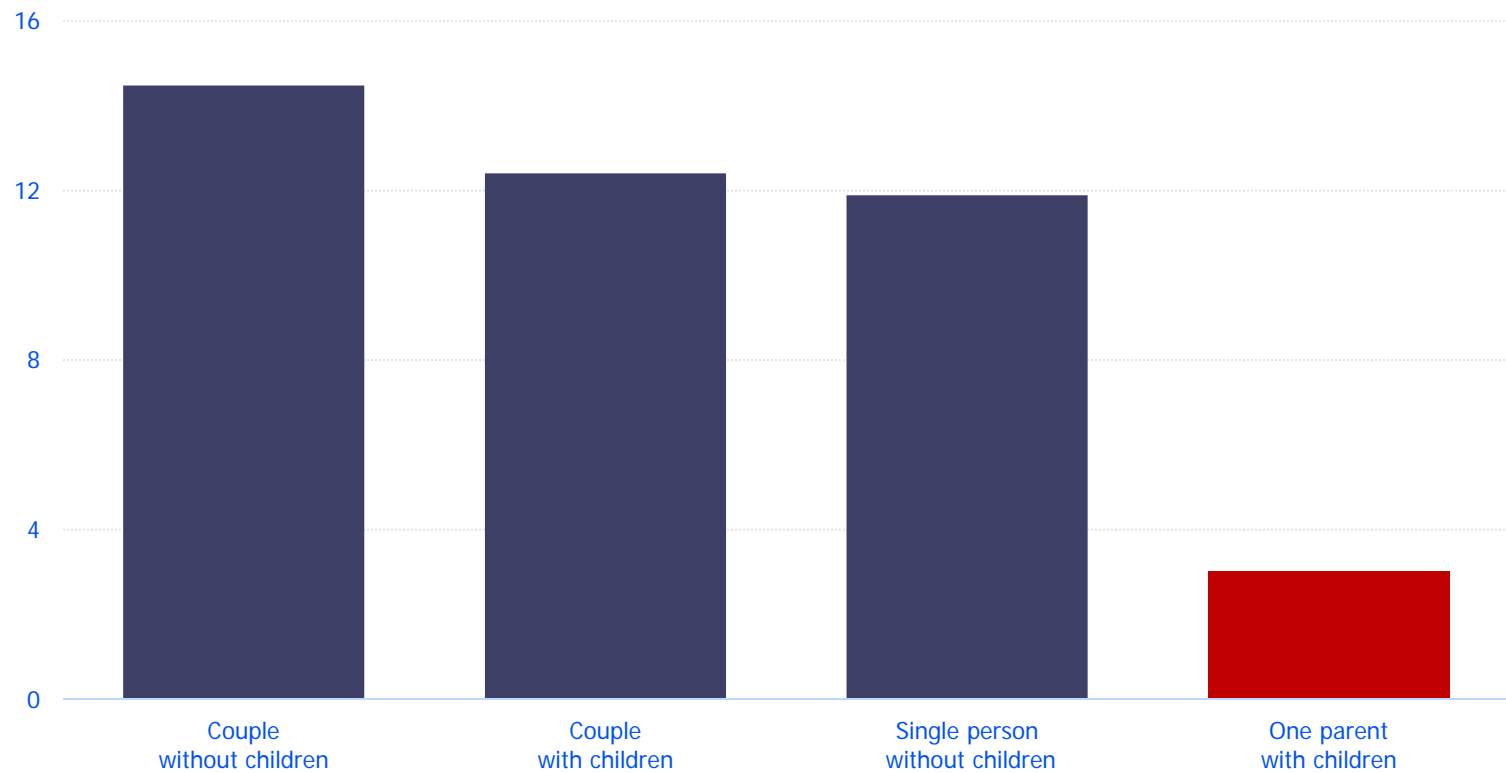


Source: U.S. Bureau of Labor Statistics.



Uses

Shares of personal taxes for selected family types, percent, 2013

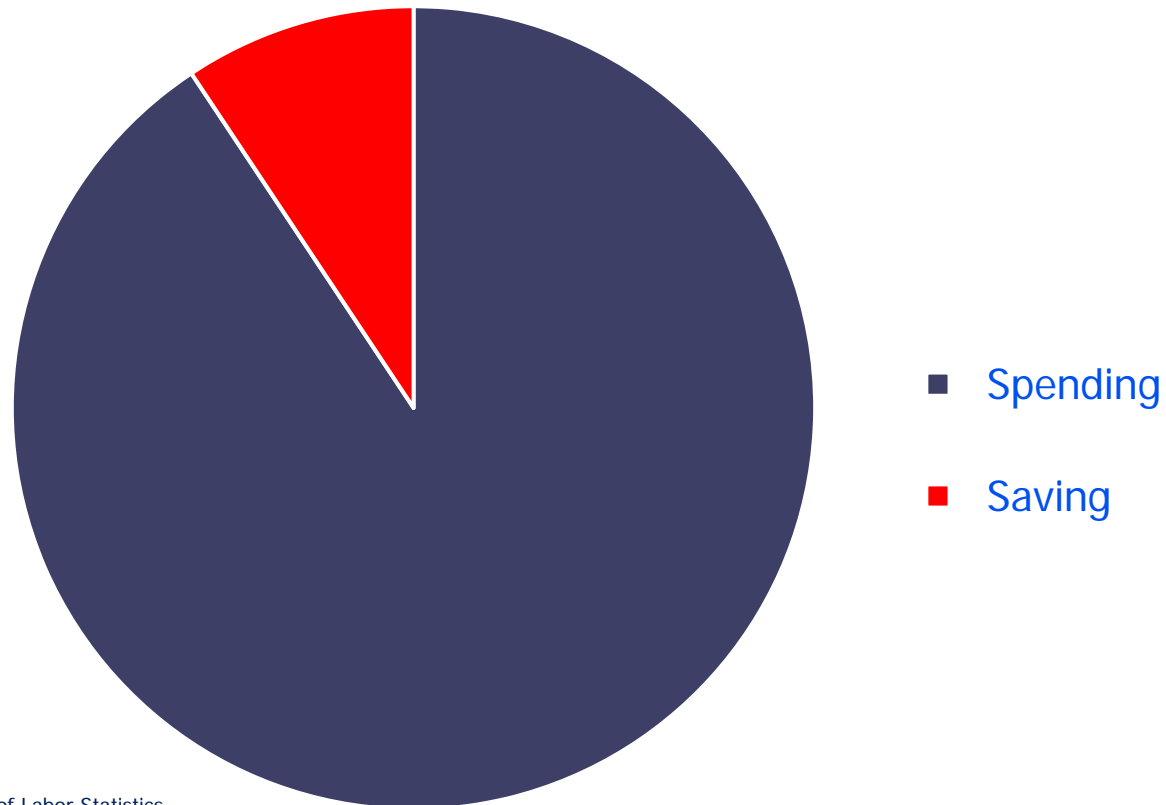


Source: U.S. Bureau of Labor Statistics.



Uses

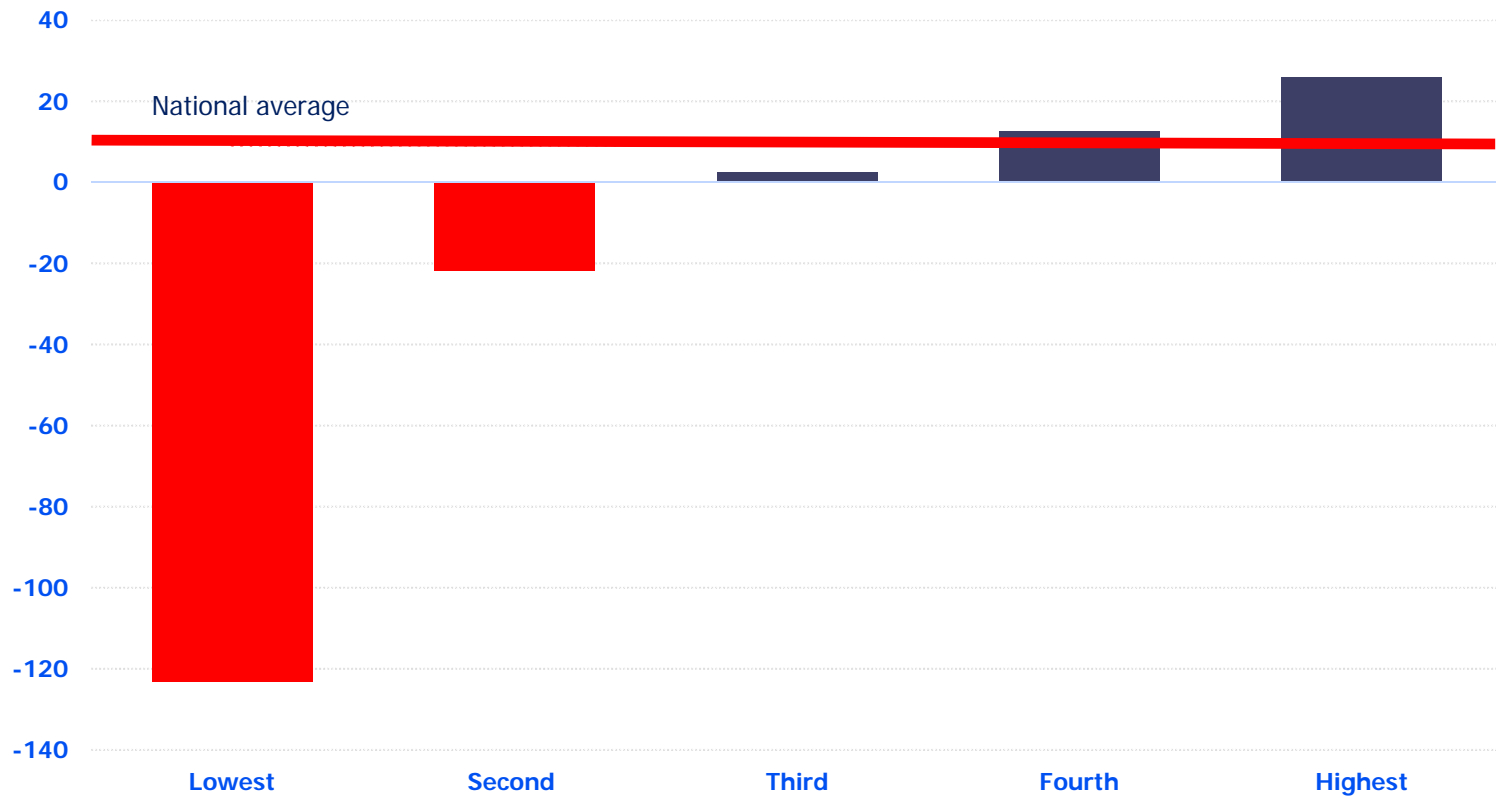
Average spending and saving per household, percent, 2013



Source: U.S. Bureau of Labor Statistics.

Uses

Shares of savings by income quintile, percent, 2013



Source: U.S. Bureau of Labor Statistics.



Your input!

Questions?
Ideas!

