

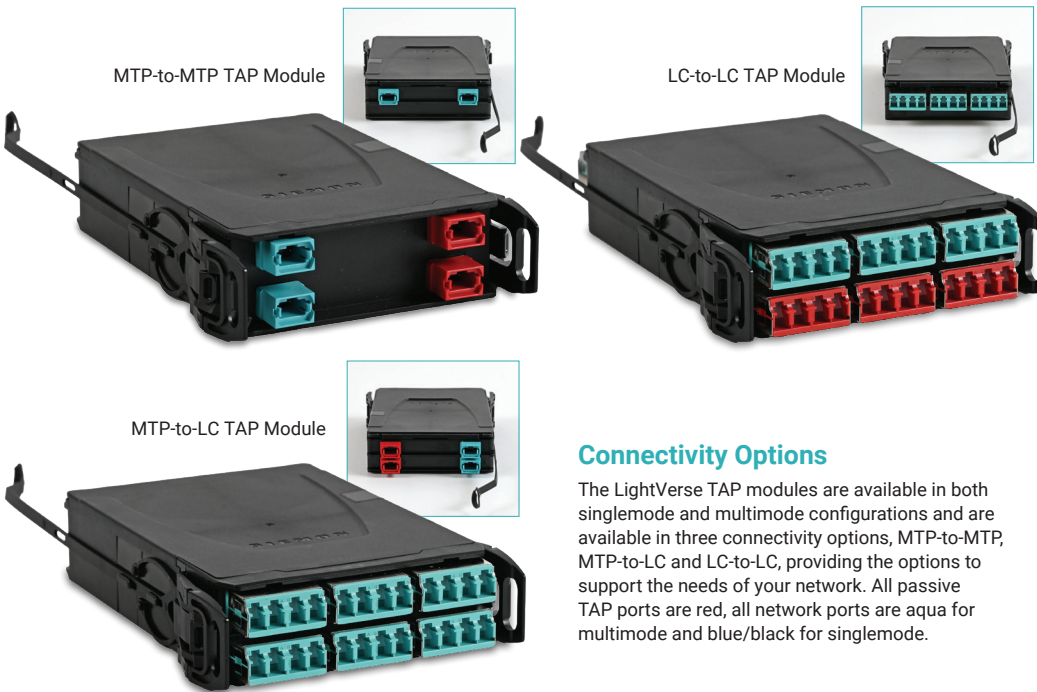
# LightVerse® Connectivity System

## TAP Modules

Regional Availability – Global

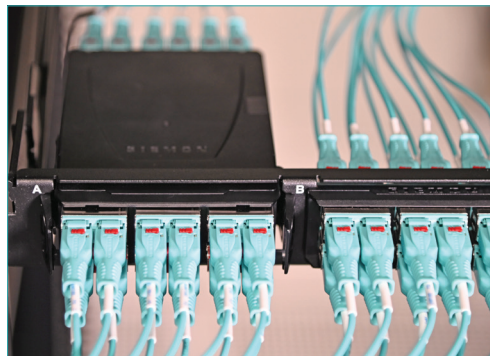
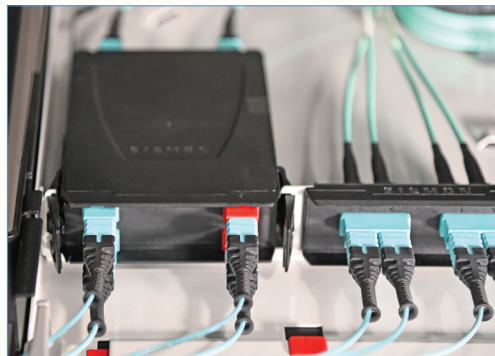


Now more than ever, network performance is critical to your success as a network operator. With such requirements for network integrity, managing your overall network reliability can be a challenge. Siemon's LightVerse system includes a full range of passive TAP modules designed to allow network operators an easy and flexible method enabling passive network performance monitoring. Network performance monitoring is critical to meeting operator service level agreements.



### Connectivity Options

The LightVerse TAP modules are available in both singlemode and multimode configurations and are available in three connectivity options, MTP-to-MTP, MTP-to-LC and LC-to-LC, providing the options to support the needs of your network. All passive TAP ports are red, all network ports are aqua for multimode and blue/black for singlemode.



### Passive Network Monitoring

Passive network monitoring is critical to ensuring that you meet and maintain your customers' service level agreements. In instances of network degradation, LightVerse TAP modules support a network operators ability to verify data integrity and help determine where any issues may have occurred across the network.

The LightVerse Passive TAP modules are offered in two standard power splits, 70/30 and 50/50, with other power splits being available on request. The power splits refer to the percentage of network module power sent to the network versus the percentage of network module power sent to the third party monitoring application.



### Easy Management

Each LightVerse TAP module includes an integrated pull tether which allows for easy installation and rear removal in tight, high density application environments, allowing users to quickly deliver move, adds and changes.



### Adaptable Design

The LightVerse TAP modules are interoperable with Siemon's comprehensive range of LightVerse patch panels, enclosures and Standard Wall Mount Box. This allows users to deliver passive network monitoring where you need it most.

## Product Information

### OPTICAL PERFORMANCE REQUIREMENTS – EXTERNAL

CONFIGURATION	Split Ratio	SM (1310 & 1550 nm)		MM (850 & 1300 nm)	
		IL (dB)	RL (dB)	IL (dB)	RL (dB)
MTP-TO-LC	Live 70%	2.60	50.0	2.55	20.0
	TAP 30%	6.30	50.0	6.15	20.0
	Live/TAP 50%	4.00	50.0	3.85	20.0
MTP-TO-MTP	Live 70%	2.70	50.0	2.60	20.0
	TAP 30%	6.40	50.0	6.20	20.0
	Live/TAP 50%	4.10	50.0	3.90	20.0
LC-TO-LC	Live 70%	2.50	50.0	2.50	30.0
	TAP 30%	6.20	50.0	6.10	30.0
	Live/TAP 50%	3.90	50.0	3.80	30.0
	BiDi Live/TAP 50%	3.90	50.0	3.80	30.0

CONFIGURATION	SM (1310 & 1550 nm)		MM (850 & 1300 nm)	
	IL (dB)	RL (dB)	IL (dB)	RL (dB)
MTP MATED PAIR MAX LOSS	0.3	60.0	0.2	20.0
LC MATED PAIR MAX LOSS	0.2	55.0	0.15	30.0
SPLITTER 70/30 MAX LOSS	2.10/5.80	50.0	2.20/5.80	30.0
SPLITTER 50/50 MAX LOSS	3.5	50.0	3.5	30.0
SPLITTER 50/50 BiDi MAX LOSS	3.5	50.0	3.5	30.0



## Ordering Information

### Base-8 MTP-to-LC

Part Number	Description	Split Ratio	No. Monitored Duplex Ports
LVT24E-70U-FL-R	TAP module, 70/30, OS2, ULL, 24-fiber, Base-8 Black MTP-to-Blue Shuttered LC, Rear Red TAP, Unpinned	70/30	12
LVT24E-70V-FL-R	TAP module, 70/30, OM4, ULL, 24-fiber, Base-8 Aqua MTP-to-Aqua Shuttered LC, Rear Red TAP, Unpinned	70/30	12
LVT24E-50U-FL-R	TAP module, 50/50, OS2, ULL, 24-fiber, Base-8 Black MTP-to-Blue Shuttered LC, Rear Red TAP, Unpinned	50/50	12
LVT24E-50V-FL-R	TAP module, 50/50, OM4, ULL, 24-fiber, Base-8 Aqua MTP-to-Aqua Shuttered LC, Rear Red TAP, Unpinned	50/50	12

### Base-12 MTP-to-LC

Part Number	Description	Split Ratio	No. Monitored Duplex Ports
LVT24T-70U-FL-R	TAP module, 70/30, OS2, ULL, 24-fiber, Base-12 Black MTP-to-Blue Shuttered LC, Rear Red TAP, Unpinned	70/30	12
LVT24T-70V-FL-R	TAP module, 70/30, OM4, ULL, 24-fiber, Base-12 Aqua MTP-to-Aqua Shuttered LC, Rear Red TAP, Unpinned	70/30	12
LVT24T-50U-FL-R	TAP module, 50/50, OS2, ULL, 24-fiber, Base-12 Black MTP-to-Blue Shuttered LC, Rear Red TAP, Unpinned	50/50	12
LVT24T-50V-FL-R	TAP module, 50/50, OM4, ULL, 24-fiber, Base-12 Aqua MTP-to-Aqua Shuttered LC, Rear Red TAP, Unpinned	50/50	12

# Ordering Information

## Base-8 MTP-to-MTP

Part Number	Description	Split Ratio	No. Monitored Duplex Ports	No. Monitored MTP Ports
LVT16E-70U-FF-F	TAP module, 70/30, OS2, ULL, 16-fiber, Base-8 Black MTP-to-Black MTP, Front Red TAP, Unpinned	70/30	8	2
LVT16E-70V-FF-F	TAP module, 70/30, OM4, ULL, 16-fiber, Base-8 Aqua MTP-to-Aqua MTP, Front Red TAP, Unpinned	70/30	8	2
LVT16E-50U-FF-F	TAP module, 50/50, OS2, ULL, 16-fiber, Base-8 Black MTP-to-Black MTP, Front Red TAP, Unpinned	50/50	8	2
LVT16E-50V-FF-F	TAP module, 50/50, OM4, ULL, 16-fiber, Base-8 Aqua MTP-to-Aqua MTP, Front Red TAP, Unpinned	50/50	8	2

## Base-12 MTP-to-MTP

Part Number	Description	Split Ratio	No. Monitored Duplex Ports	No. Monitored MTP Ports
LVT24T-70U-FF-F	TAP module, 70/30, OS2, ULL, 16-fiber, Base-12 Black MTP-to-Black MTP, Front Red TAP, Unpinned	70/30	12	2
LVT24T-70V-FF-F	TAP module, 70/30, OM4, ULL, 16-fiber, Base-12 Aqua MTP-to-Aqua MTP, Front Red TAP, Unpinned	70/30	12	2
LVT24T-50U-FF-F	TAP module, 50/50, OS2, ULL, 16-fiber, Base-12 Black MTP-to-Black MTP, Front Red TAP, Unpinned	50/50	12	2
LVT24T-50V-FF-F	TAP module, 50/50, OM4, ULL, 16-fiber, Base-12 Aqua MTP-to-Aqua MTP, Front Red TAP, Unpinned	50/50	12	2

## LC-to-LC

Part Number	Description	Split Ratio	No. Monitored Duplex Ports
LVT12L-70U-LL-F	TAP module, 70/30, OS2, ULL, 12-fiber, Blue LC-to-Blue LC (Shuttered), Front Red TAP	70/30	6
LVT12L-70V-LL-F	TAP module, 70/30, OM4, ULL, 12-fiber, Aqua LC-to-Aqua LC (Shuttered), Front Red TAP	70/30	6
LVT12L-50U-LL-F	TAP module, 50/50, OS2, ULL, 12-fiber, Blue LC-to-Blue LC (Shuttered), Front Red TAP	50/50	6
LVT12L-50V-LL-F	TAP module, 50/50, OM4, ULL, 12-fiber, Aqua LC-to-Aqua LC (Shuttered), Front Red TAP	50/50	6
LVT12L-BDU-LL-F	TAP module, 50/50 BiDi, OS2, ULL, 12-fiber, Blue LC-to-Blue LC (Shuttered), Front Red TAP	50/50 BiDi	6
LVT12L-BDV-LL-F	TAP module, 50/50 BiDi, OM4, ULL, 12-fiber, Aqua LC-to-Aqua LC (Shuttered), Front Red TAP	50/50 BiDi	6

Siemon provides a range of high-performance fiber solutions compatible with our LightVerse TAP Modules. These include:

View our full LightVerse fiber optic modules offering [here](#).

View our full LightVerse fiber optic adapter plates offering [here](#).

View our full LightVerse fiber optic splice cassettes offering [here](#).

Siemon has a comprehensive range of high performance pre-terminated fiber optic trunks. These include:

- [LC-to-LC Trunks](#)
- [MTP-to-LC Trunks](#)
- [MTP-to-MTP Trunks](#)

Because we continuously improve our products, Siemon reserves the right to change specifications and availability without prior notice.

**North America**  
P: (1) 860 945 4200

**Mexico**  
P: (521) 556 387 7708/09/10

**Latin America**  
P: (571) 657 1950/51/52

**Europe**  
P: (44) 0 1932 571771

**China**  
P: (86) 215385 0303

**India, Middle East & Africa**  
P: (971) 4 3689743

**Asia Pacific**  
P: (61) 2 8977 7500

**Siemon OEM Technologies**  
P: (1) 860 945 4213  
[www.siemon.com/OEM](http://www.siemon.com/OEM)

[www.siemon.com/lightverse](http://www.siemon.com/lightverse)

