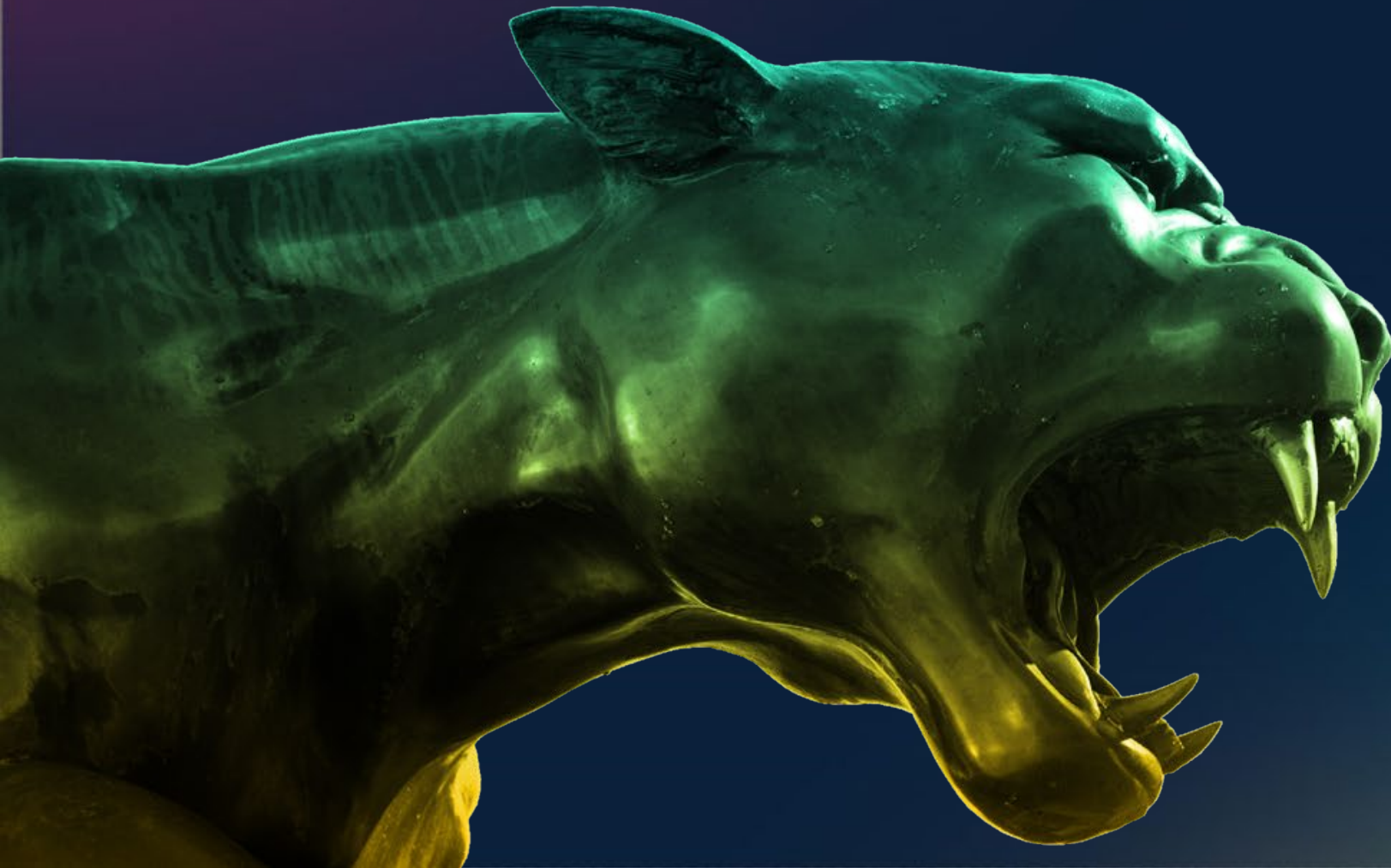


The Emergence of Telehealth During the Pandemic

FIU

Online



FLORIDA INTERNATIONAL UNIVERSITY



MEET THE SPEAKERS - It's nice to meet you!



Christopher Cuellar

Adjunct Professor

Nicole Wertheim College of Nursing and Health Sciences
Florida International University

Nancy Humbert, APRN MSN

Adjunct Professor

Nicole Wertheim College of Nursing and Health Sciences
Florida International University

Dr. Saad Ehtisham, DHA FACHE

Adjunct Professor

Nicole Wertheim College of Nursing and Health Sciences
Florida International University
President - Novant Health Greater Charlotte Market and
Novant Health Presbyterian Medical Center



**Nicole Wertheim
College of Nursing
& Health Sciences**

Masters of Health Services Administration

Learning Objectives

- **Outline telehealth's role in organizational change, care models, health equity, and reimbursement post-COVID-19**
- **Assess the benefits of designing technologies for physicians and other allied healthcare professionals**
- **Define strategies to incorporate telehealth to improve workflows, patient satisfaction & quality of care**



ABOUT FIU

Florida International University is a public research university with colleges and schools that offer bachelor's, master's and doctoral programs in fields such as architecture, business, engineering, international relations, law, medicine, and public affairs.

\$1.4B



Annual budget

\$177M

Total research expenditures in FY 2016-2017) 2016 ranking

11



Colleges and schools including Medicine and Law

57K

Enrollment

96%



of faculty who hold doctoral degrees or highest degree attainable in their field

201



Bachelor's, master's and doctoral programs

224K



Alumni

#1

in the nation in awarding bachelor's and master's degrees to Hispanic students



#1

in producing Hispanic Engineering Majors (STEM) 2016 ranking

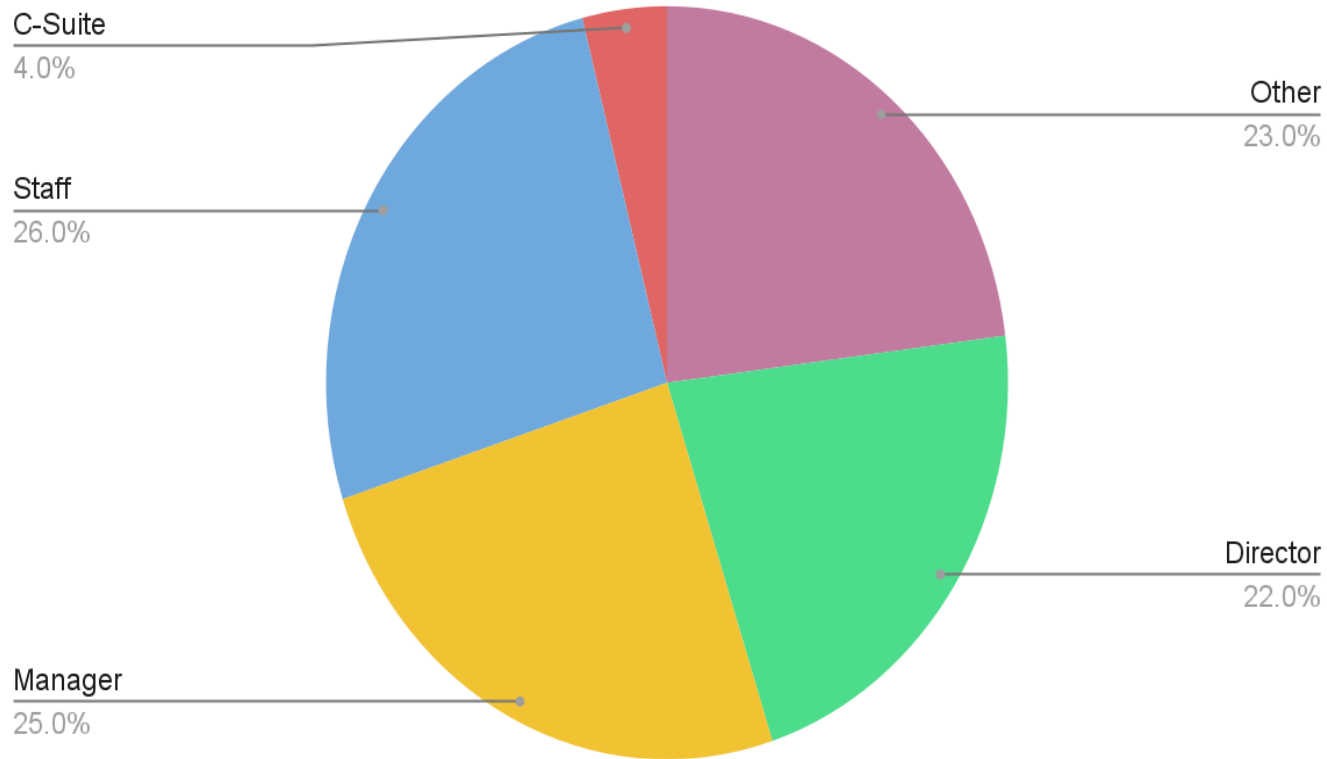


R1:

Doctoral Universities - Highest Research Activity

ABOUT YOU

Attendee Backgrounds



Background/Training

56%	Registered Nurse / Advanced Practice / Physician Assistant
18%	Non-Clinical
14%	Other
4%	Physicians
8%	Radiology/ Lab / Pharmacist / Dentist



REFLECTION - Question 1



We invite you to reflect & answer along

How has the pandemic impacted the relationship between the Telehealth industry and healthcare organizations?

****Reflect on the relationship prior to the pandemic, during the initial outbreaks and wave, and where we are now****



REFLECTION - Question 2

We invite you to reflect & answer along

During the Pandemic, which healthcare initiatives contributed to the growth of the Telehealth industry?

How did traditional healthcare organizations benefit from such policies?

- **COVID-19 Waivers**
- **Telehealth initiatives**
- **Patient Accessibility increases**



REFLECTION - Question 3

We invite you to reflect & answer along

Which issues in healthcare do you believe the Pandemic has exacerbated?

How can Telehealth answer prior and more current concerns?



REFLECTION - Question 4

We invite you to reflect & answer along

What ways do you believe your healthcare organization could implement more Telehealth-friendly policies in your day-to-day operations?

What aspects of Telehealth would YOU like to see more interwoven?



REFLECTION - Question 5

We invite you to reflect & answer along

What is the future outlook for Healthcare in respect to emerging technologies, new healthcare models, and health equality?

In your opinion, what does the field of Healthcare look like Post-COVID-19 pandemic?

QUESTION & ANSWER SECTION

FIU

Online

Ask your questions to our expert panel of faculty members

(Remember there are no bad questions!)



FIU

Online

THANK YOU

855.465.0942

FIUONLINE.FIU.EDU



FLORIDA INTERNATIONAL UNIVERSITY