

Accelerating digital transformation with the best in breed SD WAN solution



Benefits at a glance

- **Cost:** Delivered using competitively priced public Internet services, with only high priority traffic routed across premium MPLS paths
- **Resilience:** Either network path (MPLS or Internet) can be used as backup in the event of a failure
- **Speed of delivery:** Using your existing Internet access enables a much quicker service deployment than OLO tails
- **Control:** Easily manage your traffic on chosen application with thresholds and change traffic patterns via portal
- **Flexibility:** Open X86 architecture means that one CPE device can act as a router, firewall, & application performance monitor. With universal CPE, benefit from zero-touch installation
- **Agility:** Simple interface to manage your WAN. You can control your own service, add a new branch site in hours or upgrade its bandwidth instantaneously

What makes us different:

We are recognized by the industry as market leading in SDN/NFV and Ethernet services.

- Award winning SD WAN service
 - Own carrier-grade network
 - Pan-European service portfolio
 - Unique customer experience
- Colt combines the strength of our fibre network on-net, with the cost efficiency of using 3rd party Internet off-net.

Colt's global next-generation network and leadership with SD WAN combines with technology from recognised SASE leader Versa Networks to offer customers end-to-end high-performance, secure, future-proof connectivity.

What is Colt SD WAN

Colt SD WAN enables Internet to be used as a business network and an MPLS alternative for your WAN.

You will be provided with small common off the shelf (COTS) servers, pre-configured Advantech boxes, as easy to set up as a home WiFi. We have also launched universal CPE, which is also available on a self-install basis.

Site types:

- SD WAN Hybrid (3rd Party OLO line + Internet line)
- SD WAN Internet-only (Internet line)
- SD WAN MPLS-only (Off-net and On-net)

Network: Multiple, regional gateways, deployed in EU, Asia and US, ensure proper coverage and connectivity between the MPLS and Internet cloud.

Network Function Virtualisation (NFV):

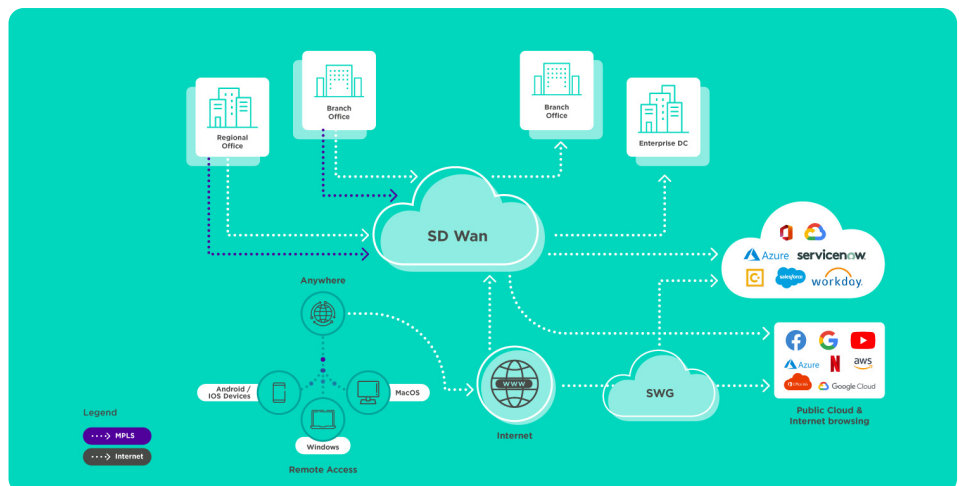
Different functions, such as router, firewall and application

performance monitor are delivered as software applications on one and the same server (Advantech).

Transport Security: All WAN traffic is encrypted via IPsec tunnelling, if not using private dedicated lines

Key Features

- Self-Install CPE (Zero Touch Provisioning)
- Dual CPE (High Availability Site)
- Multi-Cloud Access
- Colt SASE solutions
- SD WAN Remote Access
- Colt SASE Gateway Solution
- Traffic steering (Dynamic multi-pathing)
- VoIP on SD WAN
- Dual stack IPv6 support
- Analytics (Self-service traffic view)
- Customer Portal
- Integrated firewall
- Active/Active operation:



For more information, please contact us on:

+44(0) 20 7863 5510
 sales@colt.net
 www.colt.net