

*Special Olympics*  
— Delaware —



**2020**

*Special  
Olympics*  
Delaware



**ANNUAL  
REPORT**



## 2020 SODE BOARD OF DIRECTORS

### **PRESIDENT**

Larry Maister  
*JLL*

### **PRESIDENT-ELECT**

Katherine Dickinson, Esq.  
*Wawa, Inc.*

### **VICE PRESIDENT**

Rob Coupe  
*Del. Dept. of Safety & Homeland Security*

### **TREASURER**

Lindsay Faulstich, CPA, MST  
*Siegfried Advisory*

### **SECRETARY**

Christie Longo  
*Wilmington Trust*

### **PAST PRESIDENT**

Ed DeLooze  
*Aramark*

### **SODE ATHLETE REPRESENTATIVE**

Claudia Brown  
*Kirk & Associates*

Mary Kate Campbell, Esq.  
*Chemours*

Ralph Cetrulo  
*Stefano Slack, LLC*

Chris Crowell  
*Edgewell Personal Care*

Thomas Grimm, Esq.  
*Morris, Nichols, Arsht & Tunnell LLP*

Keith Handling  
*University of Delaware (Retired)*

Ruth Lavelle  
*Puglisi & Associates*

Dr. Jennifer LeComte  
*Rowan University School of  
Osteopathic Medicine*

John Miller  
*Dept. of Justice & Del. State Police (Retired)*

Jeffrey Mitchell, CPA, MT  
*Siegfried Advisory*

Tom Moore  
*W.L. Gore*

Chip Simpson  
*Delaware State Police (Retired)*

Barbara Spence  
*Red Clay School District (Retired)*

Steve Taylor  
*USI Insurance Services, LLC*

## OUR MISSION

To provide year-round sports training and athletic competition in a variety of Olympic-type sports for children and adults with intellectual disabilities, giving them continuing opportunities to develop physical fitness, demonstrate courage, experience joy and participate in a sharing of gifts, skills and friendship with their families, other Special Olympics athletes and the community.



# A MESSAGE

## FROM THE BOARD PRESIDENT AND EXECUTIVE DIRECTOR

During times of unprecedented crisis and uncertainty, people harness a resilience they never knew they were capable of to unite with others and provide support. We rise through collective compassion and the belief that, together, we can overcome any challenge.

This is the same spirit and grit we see in our athletes every day – both on and off the playing field.

And it couldn't have been felt more acutely than in 2020.

A sense of a connectedness and a willingness to actively help shape the world around us for the better have always been Special Olympics hallmarks.

Special Olympics Delaware responded to our changing environment with creative virtual programming that provided a healthy response to the isolation our athletes were experiencing. Our programming fostered meaningful social connections and with the help of a new position – Practice Safety Volunteers, we slowly returned to in-person training in the fall. Our athletes were over the moon to see their friends, coaches and supporters once again.

Our most important take away from 2020 is our recognition of how much we depend on one another, how much we matter to each other, and that we can harness our shared humanity and heal together.

For 50 years, Special Olympics has stood as a shining example of the belief that everyone can be part of our community, and that our world will only be at its best when we include the talents and energies of every single person. It reminds us that any of us can accomplish great things, if only given the chance.

Thank you for your dedicated partnership in our mission to celebrate, respect and be a champion of inclusion for all. Together, we are emerging stronger and making a meaningful difference for thousands of athletes across this great state.

**Larry Maister, Board President**  
Special Olympics Delaware

**Ann Grunert, Executive Director**  
Special Olympics Delaware



*Our mission is about discovering and celebrating the greatness we each have inside of us. We believe sports have the power to transform lives, because for 50 years we've seen sports transform lives. When our athletes build the confidence to step onto the field, their next step could take them anywhere.*

**BE THE DIFFERENCE ... JOIN US!**

**SPECIAL OLYMPICS  
DELAWARE**

## BY THE NUMBERS



Total # of  
SODE Athletes  
**4,193**



# of Olympic-type  
sports  
**19**



# of Certified  
Coaches  
**317**



# of Volunteers  
**4,865**



**5** Area Programs  
statewide

**80** Area Leadership members



# of schools  
engaged

**158**

**77** Unified Champion Schools



**Law Enforcement**  
FACILITIES, AGENCIES  
AND TROOPS

**100+**

WWW.SODE.ORG  
302.831.4653 • info@sode.org

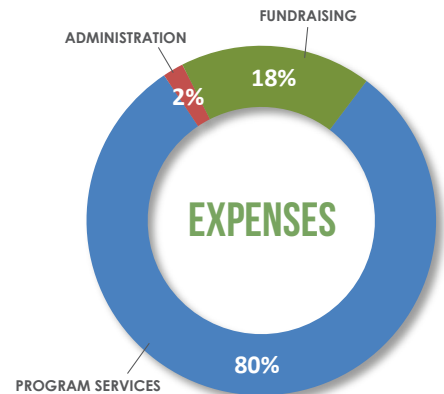
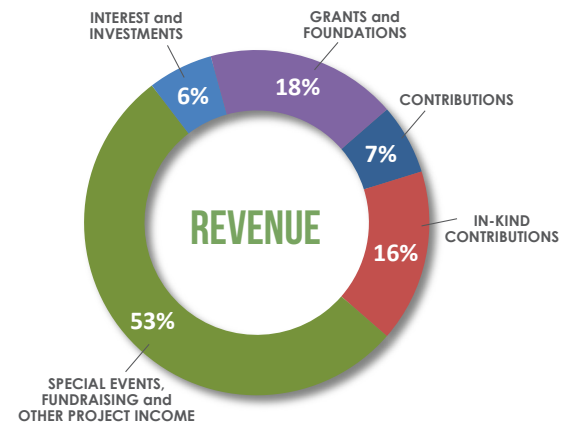
Special Olympics Delaware continued to show growth despite the unique challenges faced in 2020 -- with revenue generated through fundraising efforts, special events, support from individual donors, corporate partners and members of the community. As part of our ongoing commitment, there is no fee charged for our programs so that sports experiences can be made available to every Special Olympics athlete who wants to participate. This meaningful work is made possible thanks to a strong financial foundation.

## 2020 FINANCIAL REPORT ... STABILITY & SUSTAINABILITY

### STATEMENT OF ACTIVITIES AND CHANGE IN NET ASSETS

(For the year ended December 31, 2020 and summarized information for December 31, 2019)

	2020	*Restated 2019
<b>PUBLIC SUPPORT AND REVENUE</b>		
Contributions	\$ 153,616	\$ 196,796
In-Kind Contributions	379,199	787,146
Special Events Revenue, Net	1,053,490	1,276,464
Other Project Income	65,178	82,327
Fundraising Projects	129,609	95,598
Grants & Foundations	420,250	215,063
<b>Total Public Support and Revenue</b>	<b>\$2,201,342</b>	<b>\$2,653,394</b>
<b>EXPENSES</b>		
Program Services	\$1,434,790	\$2,146,476
Management & General (Administration)	34,395	47,087
Fundraising	316,823	344,384
<b>Total Expenses</b>	<b>\$1,786,008</b>	<b>\$2,565,947</b>
<b>Change in Net Assets before Non-Operating Activity</b>	<b>\$415,334</b>	<b>\$87,447</b>
<b>NON-OPERATING ACTIVITY</b>		
Interest & dividend income, net of fees	\$21,660	\$24,680
Capital gains distribution	2,272	1,944
Realized gain on investments	40,753	25,588
Unrealized gain on investments	79,060	105,665
Loss on disposal of equipment	(660)	-
<b>Total Non-Operating Activity</b>	<b>\$143,085</b>	<b>\$157,877</b>
<b>INCREASE (DECREASE) IN NET ASSETS</b>	<b>\$558,419</b>	<b>\$245,324</b>
<b>NET ASSETS, BEGINNING OF YEAR</b>	<b>1,928,230</b>	<b>1,682,906</b>
<b>NET ASSETS, END OF YEAR</b>	<b>\$2,486,649</b>	<b>\$1,928,230</b>



**80%** Approximately \$0.80 of every dollar went to sports programs that directly benefitted Special Olympics athletes throughout the state

*Special Olympics Delaware provides funding to all its programs to ensure everyone can fully participate in all sports. The funding covers the costs of training facilities, sports equipment, uniforms, and any other related expenses required to provide quality training and competition opportunities.*





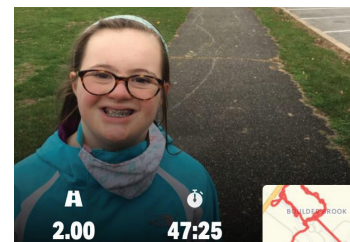
## 2020 PROGRAM YEAR ... RESILIENCE & HOPE

Like the majority of Special Olympics programs across the country, the Covid-19 pandemic had a significant impact on SODE's planned activities and events for 2020. During this unprecedented year, athletes were provided the opportunity to participate in safe in-person practice settings or through virtual fitness challenges from home. SODE pivoted by offering modified sport seasons supported by local training and virtual opportunities with the same level of high-quality programming, while working hard to ensure the safety of our athletes, coaches, volunteers and supporters.



(Red text denotes canceled events in 2020)

<b>JANUARY</b>	5 Area Bowling Qualifiers State Bowling Chapter Tournament Unified Champion Schools Student Leadership Conference
<b>FEBRUARY</b>	29th Annual Lewes Polar Bear Plunge Benefiting SODE <i>(Broke record for most Bears and most money raised: \$1M+ 3,733 Bears)</i> Winter Games at Seven Springs, PA (Alpine, Nordic, Snowshoe, Figure Skating) Basketball Jamboree
<b>MARCH</b>	Spring Coach Clinics Spread the Word Respect school assemblies statewide <del>State Basketball Tournament</del>
<b>APRIL</b>	Coaches & Area Virtual Meetings <del>Ride to the Tide</del>
<b>MAY</b>	School of Strength Online Fitness Program <del>Over the Edge</del>
<b>JUNE</b>	Fit 5 Fitness Challenge Virtual Summer Games 50th kickoff Celebration (Dance Party and Spirit Week) <del>Torch Run</del> <del>Summer Games</del>
<b>JULY</b>	Virtual Fitness and Modified Fall Sports Season Planning Coaches & Area Virtual Meetings
<b>AUGUST</b>	<del>Summer Camp</del>
<b>SEPTEMBER</b>	Truck Convoy Cycling Classic Tournament State Golf Tournament Family Day at the Beach Summer Camp Golf Classic Bridge Run
<b>OCTOBER</b>	Return to Play - With support from Practice Safety Volunteers (soccer, bocce, long distance running, flag football) Stronger Together Virtual Run, Walk, Bike, Roll challenge – celebrating partnership with Delaware Law Enforcement for Special Olympics <del>Fall Festival</del>
<b>NOVEMBER</b>	Virtual Dance Party for Athletes Coaches & Area Virtual Meetings
<b>DECEMBER</b>	Virtual Fitness and Modified Sports Season Planning <del>Reindeer Run</del>





# 1970s

In 1970, Eunice Kennedy Shriver approached the late Bob Marvel, then President of the Wilmington Jaycees, about creating the Delaware chapter of Special Olympics. With two friends, Vic Murray and Don Bergner, they recruited athletes and volunteers and raised the necessary funds.



**The first Special Olympics athletic competition in Delaware was a track & field meet held in Wilmington on June 5, 1971.**

Nearly 100 athletes participated. In attendance were County Councilman Joseph R. Biden, U.S. Rep. Pete Dupont, Gov. Sherman Tribbit, Wilmington Mayor Harry Haskell and University of Delaware football coach Tubby Raymond.



In the 1970s, Special Olympics Delaware (SODE) became part of Special Olympics Inc. with more than 400 athletes competing in the sports of aquatics, basketball, bowling, soccer and cross-country running.

The Lions Clubs of Delaware select SODE as its charity of choice.



# 1990s

The first Lewes Polar Bear Plunge is held in Lewes, February 1992.

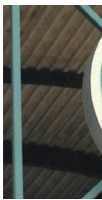
The first Fall Festival takes place at St. Andrews in 1992.

Sussex County SODE office opens in Georgetown in 1994.

SODE office opens on the University of Delaware athletic complex in 1995.

SODE inducts inaugural Hall of Fame members Barbara and Winnie Spence in 1996.

SODE's first Athlete Input Council developed in 1999.



# 1980s

The first SODE state office opened in the Hudson State Service Center, 1981.

The Brandywine Social Club started the first adult community-based program in 1983.

The first Delaware Law Enforcement Torch Run for Special Olympics runs into the 1987 Summer Games.

The Summer Games are moved permanently to the University of Delaware in 1989.



Healthy Athletes is introduced at Summer Games in 2001.

Motor Activity Training Program is launched in 2001.

In 2005, SODE is chosen to pilot the Young Athletes program (for athletes ages 2-7yrs old).

SODE attends the first Special Olympics U.S. National Games (Ames, Iowa - 2006), as well as the Special Olympics biennial World Winter and Summer Games (Ireland-2003, Japan-2005, China-2007, Idaho, USA-2009).

By 2007, SODE grows to serve over 3,300 athletes.

Project UNIFY is launched in schools as a youth leadership initiative, 2009.



# 2010s

Special Olympics Delaware celebrates its 40th Summer Games in 2010. Athlete growth and program quality and sustainability become important strategic goals.

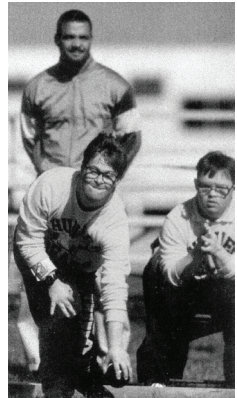
By this time, SODE has grown to serve more than 4,000+ athletes statewide. Due to the rapid growth in athlete enrollment, local Area programs are established in five geographical areas statewide: Wilmington, Newark, MOT (Middletown, Odessa, Townsend), Kent and Sussex.

In 2011, Over the Edge becomes SODE's newest community fundraiser, in addition to ten other unique events to raise awareness and funds for SODE programs.

The Delaware Interscholastic Athletic Association officially partners with SODE in Unified Sports in 2013.

By 2017, Special Olympics Project UNIFY emerges as the Unified Champion Schools program formally recognizing schools nationwide with a clear commitment to whole-school engagement in promoting respect and inclusion.

SODE sends delegations of athletes, coaches and Law Enforcement torch runners to Special Olympics National Games every 4 years (Nebraska-2010, New Jersey-2014, Seattle-2018), and to the World Winter and Summer Games (Greece-2011, South Korea-2013, Los Angeles, USA-2015, Austria-2017, United Arab Emirates-2019).



2000

2010

2020



# 2000s



# 2020s

Special Olympics Delaware proudly celebrates its 50th Anniversary in June 2020.

For the last 50 years, Special Olympics Delaware has transformed the lives of adults and children with intellectual disabilities through the power, joy and community of sports. It's an incredible milestone. But we're just as excited about the next 50. Together, we've given thousands of men, women, and children across Delaware the support they need to chase their dreams. Imagine what we can do for the next 50.

“ Our son, Larry, joined Special Olympics Delaware nearly fifty years ago. He thrived by gaining confidence in learning how to excel in many sports - including his favorites, swimming and bowling. Special Olympics has been such an important part of his life, and as a family, we are so deeply appreciative. ”

- Judy and Howard Zucker



# THANK YOU TO ALL OUR PARTNERS AND SPONSORS FOR THEIR VITAL SUPPORT OF OUR ATHLETES



## YEAR-ROUND PARTNER (\$500,000+)

**Delaware Law Enforcement for Special Olympics**

## YEAR-ROUND SPONSORS (\$40,000+)

Bounteous†  
Discover Bank  
Forever Media\*  
The Wawa Foundation

## PREMIER (\$20,000 - \$39,999)

Delaware Department of Correction  
DuPont

## GUARDIAN (\$10,000 - \$19,999)

Bank of America  
BNY Mellon

Jack Lingo Realtor, Inc.  
Kohl's  
Lion's Clubs Int. District 22D

M&T Bank  
WBOC/Fox 21/WRDE\*

## CHAMPION (\$5,000 - \$9,999)

Cape Gazette\*  
Delaware Dept. of Transportation \*  
Delaware State Fair, Inc. \*  
Delmarva Power

Iron Legacy Motorcycle Club  
JP Morgan Chase & Co.  
Knights of Columbus  
Perdue Farms

Rehoboth Boardwalk Buddy Walk  
R.S. Widdoes & Son, Inc.  
Surf Bagel & Deli LLC\*  
WSFS Bank

## COMMUNITY (\$2,500 - \$4,999)

Brandywine Electronics \*  
Casa DiLeo \*  
Citi  
Correctional Officers Association of Delaware

Delaware Electric Cooperative, Inc.  
Delaware State Lodge Fraternal Order of Police  
Delaware State Troopers Association  
DuPont Country Club \*

Edgewell Personal Care  
Maple Dale Country Club \*  
The Restaurant Store  
Walmart

† **bounteous** In celebration of Special Olympics Delaware's 50th Anniversary, Bounteous (formerly The Archer Group), an innovative and transformative digital marketing company, shared its expertise by putting together a digital marketing campaign that would serve as a launching pad for SODE's next 50 years. The Bounteous team designed a state-of-the-art website for the campaign where people will be directed by way of a multi-faceted digital marketing campaign with messaging that includes the need for more athletes, coaches and supporters. Bounteous is the official presenting sponsor of the 50th Anniversary campaign which runs through next year's Summer Games, and is focused on the tagline: *Be the Difference – Join Us!*

\* Represents in-kind contributions







# 2020 DONORS

OUR DEEPEST THANKS TO ALL THE FOLLOWING INDIVIDUALS AND ORGANIZATIONS WHO POWER OUR MOVEMENT THROUGH THEIR GENEROSITY.

## \$10,000+

John Cochran  
Micki, Lanny & Robert Edelson  
Irv & Phyllis Levin

## \$5,000 - \$9,999

Stephen Hyde  
James T. Vaughn Correctional Center  
Dorothy J. Radel  
Daphne Schneider

## \$2,000 - \$4,999

Beach Family Foundation  
Blanchard Family Foundation  
Blue Hen Disposal  
Cape Henlopen Elks Lodge #2540  
Steve Cason & Stacy Dedinas  
Cynthia Corliss  
Delaware Community Foundation  
Robert DeSantis  
FBI National Academy DE/MD Chapter  
Fifer Orchards  
Nick & Marge Fuhs  
Joseph Julian  
Greg & Ruth Lavelle  
James Madden  
Larry Maister  
Robert Pasquale  
Don Sloan  
The Hometown Foundation, Inc.  
Peter Vieira

## \$1,000 - \$1,999

Artesian Water Company  
Charles Ashburn  
Auto Works Collision Center LLC  
Louis & Patricia Bartoshesky  
Elizabeth Baumeister  
Bay City Inc.  
Jean & Will Beck  
Thomas Bernadzikowski  
Caleb Boggs  
Bradford Bugher  
Thomas Bullock Sr.  
Mary Kate Campbell  
Edward Capodanno  
Tina Cernugel  
Kenneth Chlada  
Jason Cincilla  
Colonial Tennis Club Inc.  
Thomas Corrigan  
Richard Crout  
Christopher Crowell  
Walt Curran  
CW Transport  
Delaware Chiropractic Services Network  
Ed & RoseMarie Delooze  
Diamond Materials LLC  
Steven Dignan  
John Downs  
East-Side Developers Group, Inc.  
Anthony Ferrara  
Clairmarie Field  
Michael French  
Stephen S. George

Ann Grunert  
Allen Helsel  
Cheryl A. Hess  
Jonathan Jaffe  
Tira Johnson  
Dean Johnson  
Joseph R. Julian  
Daniel & Ruth Krevchuck  
Jennifer LeComte  
Jack Leshar  
Alan Levin  
Vincent Longo DMD  
Leslie McClintick  
Brian Murray  
Paul Mylander  
Mary Ann Nolan  
Nor' Easter Foundation  
Andrew Ratner  
Regional Orthopaedic Associates, PA  
Rifenburg Trucking  
Sara Rosen  
Rotary Club of Newark-Mornings  
Gregory Sacco  
William Schab  
Sea Colony Recreational Association, Inc.  
Seiberlich Family Foundation  
Kelly Showalter  
St. Andrew's School  
Andrew Stayton  
Mary & Tom Stephens  
Steve Taylor  
LeeAnn Wilkerson





Through your generosity, individuals with intellectual disabilities can showcase their abilities and demonstrate their courage, while benefiting from increased access to sports programs, more interaction in their communities, participation in health and fitness education, and—most importantly—the creation of a more welcoming society for all.

## 2020 DONORS (continued)

### \$500 - \$999

Steven F. Adams	Margaret Feola	Christine Miller
AirGas	Alberto Franco	Janie Miller
Mark Aitken	Sandra Freeman	John Miller
Joe & Kathleen A. Aquilla	Gino Gradkowski	Janice Mink
James Baker	Linda A. Gressick	Charles Moran III
Keith Baker	Robert Hathaway	Theresa A. Morrin
B & F Towing and Salvage Co. Inc.	Amy Haywood	Lane Oberembt
Best Ace Hardware	Rev. William M. Hazzard	Kevin O'Brien
Big Stuff Specialized Hauling	Thomas Higley	Lisa Olley
Robert Biggart	Mary Catherine Hopkins	Brian O'Neal
Bob's Discount Furniture	Janet J. Hughes	Samuel Peirson
Matthew Brancato	Robert Hunsberger	Edna Pierce
Carol Brants	Joyce Jack	J. Alex & Susan Poholsky
Buffalo Wild Wings	Earl Jaques	Pump & Corrosion Tech Inc.
Connie Callahan	Patricia Kelly	Elizabeth & Edward Redfield III
Cirillo Bros Inc	Vance Kershner	Eric Reinhold
Tedd Cocker	James Knittle Jr.	Liam Reynolds
Collett & Sons Transport Inc	Sarah & Scott Lammers	Francis Richardson Jr.
Carolyn & John Cotter	Jeffrey Lang	Ernest Siebold
CSC	John A. Ledden	Alan Simkins
Susan L. Dalton	Samuel Leslie	Dorothy Smith
Delaware Police Chiefs' Council	Barbara Litalien	Diane Sparks
Jack Desmond	James J. Longo	David Stella
Kathy Dickinson	David E. Lovelace	True Value Hardware, Pax Inc.
Thomas Dilley	David Lyons	Surf Bagel & Deli LLC
Michael J. Downs	William L. Mariano	Zachary Wilson
Amy Eaton Martin	Bruce Maynard	Robert Wittig
The Eleuterio Family	Frank McLaughlin	Robert B. Young
Skip Faust	Jerry McNesby	Jeffrey A. Young
Steven Feinstein	Joseph McNesby Jr.	

## CHAMPIONS TOGETHER GIVING SOCIETY

*The Champions Together Giving Society is made up of individuals who have invested in the mission and vision of Special Olympics Delaware by pledging a minimum of \$1,000 annually over 5 years. We are profoundly grateful for the commitment the following donors have shown as we strive to transform lives through sport, build inclusive communities and improve quality of life for our athletes.*



Charles Ashburn	John & Pat Cochran	Ann Grunert	Charles Moran III
Auto Works Collision Center LLC	Thomas Cook	Deborah Hamilton	Paul Mylander
Bad Hair Day, Inc.	Cynthia Corliss	Lynn Hochberg	Mary Ann Nolan
Keith Baker	Thomas & Leigh Corrigan	Dean Johnson	Kevin O'Brien
Elizabeth Baumeister	Christopher Crowell	Joseph Julian	Andrew Ratner
Jean & Will Beck	Walt Curran	Greg & Ruth Lavelle	Sara Rosen
Shannon Argo	Ed & RoseMarie Delooze	Jennifer LeComte	Sandra Rowland
Connie Callahan	Robert DeSantis	Jack Leshner	Gregory Sacco
Edward Capodanno	Steven Dignan	Christie Longo	Mary & Tom Stephens
Steve Cason & Stacy Dedinas	Dennis Dinger	James Madden	Steve Taylor
Tina Cernugel	Micki & Lanny Edelson	Larry Maister	Eugene Truono
Mike Ciabattoni	Nick & Marge Fuhs	Leslie McClintick	LeeAnn Wilkerson
Jason Cincilla	Colleen Gardner	Jeffrey Mitchell	





# 2020 FUNDRAISERS

WE ACKNOWLEDGE THE OUTSTANDING SUPPORT OF THE FOLLOWING INDIVIDUALS IN THEIR EFFORTS TO RAISE FUNDS FOR SPECIAL OLYMPICS DELAWARE'S LAW ENFORCEMENT TORCH RUN, AND LEWES POLAR BEAR PLUNGE.

## \$50,000+

Irv & Phyllis Levin

## \$10,000 - \$19,999

Hope Zucker

## \$5,000 - \$9,999

Ethan Alexander  
David Bednar  
Steven Cason  
Norm Dagg  
Rose Dagg  
Steve Dagg  
Steff DiMartine  
John Miller  
Don Sloan  
Tony Stark  
David Zarrilli  
Amy Zook

## \$2,000 - \$4,999

Erin Bailey  
Matthew Beck  
Connie Callahan  
Celeste Copeland  
Nick DiMartine  
Amy Eaton Martin  
Paul Feinstein  
Richard Feinstein  
Greg Kubiak  
Val Lovse  
J. Scott Lykens  
David Manwiller  
Jillian Mathews  
Deborah McDaniel  
Tom Moore  
Torie Moore  
Ariel Mutter  
Deanna Peck  
Susan Poley  
Ted Reiver  
Joseph Rivard  
Sheryl Shutt  
Elizabeth Simeone  
Kenny Vincent  
Donna Welsh  
John Welsh Jr.

## \$1,000 - \$1,999

Sandy Ahn  
Anthoula Anagnostou  
Robert Anen  
Shirley Bailey  
Kimberly Bates  
Drew Beideman  
JP Bennet  
Tamra Bentsen  
Michael Berheide  
Piper Biggs  
Marianne Bious  
John Boland  
April Bradford  
Ryan Bradford  
Jannelle Bryant  
Jon Buzby  
Mike Callahan  
Gary Camp  
Creston Campbell  
Jill Casey  
Patty Catanzariti  
Eric Chas  
David Clarke  
John Cook  
Carla Costa  
Robert Coupe  
Justin Daisey  
Chip Davis  
Elaine Dernoga  
Eric Disabatino  
Pete Disabatino  
Debbie Dorris  
Lanny Edelson  
Robert Edelsohn  
Jeremy Eglit  
Rebecca Evans  
Michael Feeley  
David Feinstein  
Audrey Govatos  
Edward Hanley  
Anthony Harris  
Antonia Harris  
Tabatha Harris  
Debra Heffernan  
George Hickman  
John Hinkel  
Michele Hornberger  
Darryl Jones  
Kim Kanick  
Karen Kaufman  
Joanne Kempton  
David Landis  
Don Lewis Jr.  
Jennifer Lippincott  
Sophia Mangasarian  
James Marr  
Bruce Maynard  
Maureen McClelland  
Maggie McDonald  
Marie McIntosh  
Constance Miller  
Matthew Montgomery  
Robert Moorman  
Robin Moxley  
Scott Moxley  
Denis Ostendorp

Saralynn Passwaters  
Dee Pecora  
Karen Peterman  
Veronica Petty  
Peter Pizzolongo  
Carlos Prugue  
Jessica Quinn  
Teresa Reed  
Marco Rogers  
Jennifer Saulino  
Pat Sawyer  
Cameron Scanlon  
Wendy Schadt  
Isadore Schwartz  
Ginger Shaud  
Claudia Simeone  
Chip Simpson  
Bonnie Smith  
Kenneth Smith  
Tiffany Snyder  
Robert South  
Kimberly Spence  
Carrie Staker-Jones  
Junina Sullivan  
Linda Tobin  
Collin Towner  
Richard Towner Jr.  
Michelle Ward  
Mary Ward Hutchison  
Michael Whitney  
Gary Zoll





**Special Olympics**  
— Delaware —



**SPECIAL OLYMPICS DELAWARE (SODE)**

**Ann Grunert**  
*EXECUTIVE DIRECTOR*

**STAFF**

**Jean Beck**  
*Donor Relations Specialist*

**Jon Buzby**  
*Director of Unified Champion Schools*

**Louise Doe**  
*Director of Volunteers and Athlete Initiatives*

**Kylie Frazer**  
*Director of Sports*

**Jennifer Paige**  
*Director of Graphic Design and Communications*

**Corinne Plummer**  
*Director of Special Events*

**Lisa Smith**  
*Director of Marketing & Development*

**Cheryl Talmo**  
*Director of Sports Training & Health*

**Nate Threatts**  
*Manager of Unified Champion Schools*

**Kate White**  
*Bookkeeper*

**Sue Zebley**  
*Database Manager/Receptionist*

**AREA DIRECTORS**

**Robert Bailey**  
*SODE Sussex Riptide*

**Ed Capodanno & Joanne Cunningham**  
*SODE Wilmington Wizards*

**Dave Manwiller**  
*SODE Kent Wild Kats*

**John Miller**  
*SODE Newark Dragons*

**Mary Ward Hutchison**  
*SODE MOT Tigers*

**CONTACT US**

Special Olympics Delaware • 619 South College Avenue • Newark, DE 19716  
302.831.4653 • info@sode.org

**WWW.SODE.ORG**

