
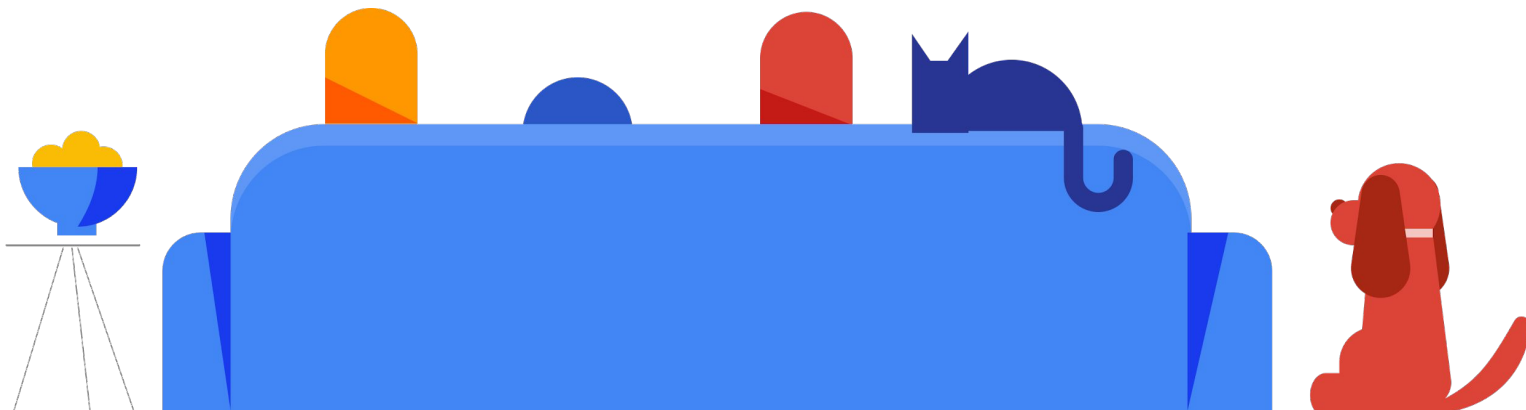


# We are about to kick-off, stay tuned!

Source to  Pay





# Supplier Info Session:

## B2B Ariba Integration

June 2022



## Today's facilitators!



**Eliza**

*Programs Lead*



**Flora**

*S2P  
Invoicing*



**Lily**

*S2P  
Invoicing*



**Bindu**

*Systems Analyst (Eng)  
Invoicing*



**Nick**

*Ariba PSS  
Program  
Lead*

## Here are some things to know as we begin:



### **Ask questions, anytime!**

You can ask questions at any time by entering them in the streaming platform's Q&A widget. We have set aside time to respond to questions submitted at the end of the session.



### **Session will be recorded.**

This session will be recorded and a recap summary sent out after.



### **Send us your feedback.**

Please complete the feedback survey in the streaming platform to help us improve future sessions.



# Agenda

1

Introduction

2

Overview

3

Deep Dive

4

Project Roadmap

5

Q&A

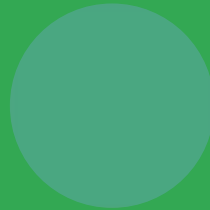


## Today's Objective:

Learn about the new  
invoice intake channel  
for **B2B Ariba  
Integration!**



Introducing a simpler way  
to do business



# Introducing a new effort to make it simpler for Suppliers to do business with Alphabet/Google



## Current (Manual) Invoice Channels

Manual touchpoints cause delays– **Maximum efficiency is not being realized!**



## 2022: New Automated Invoicing Channel

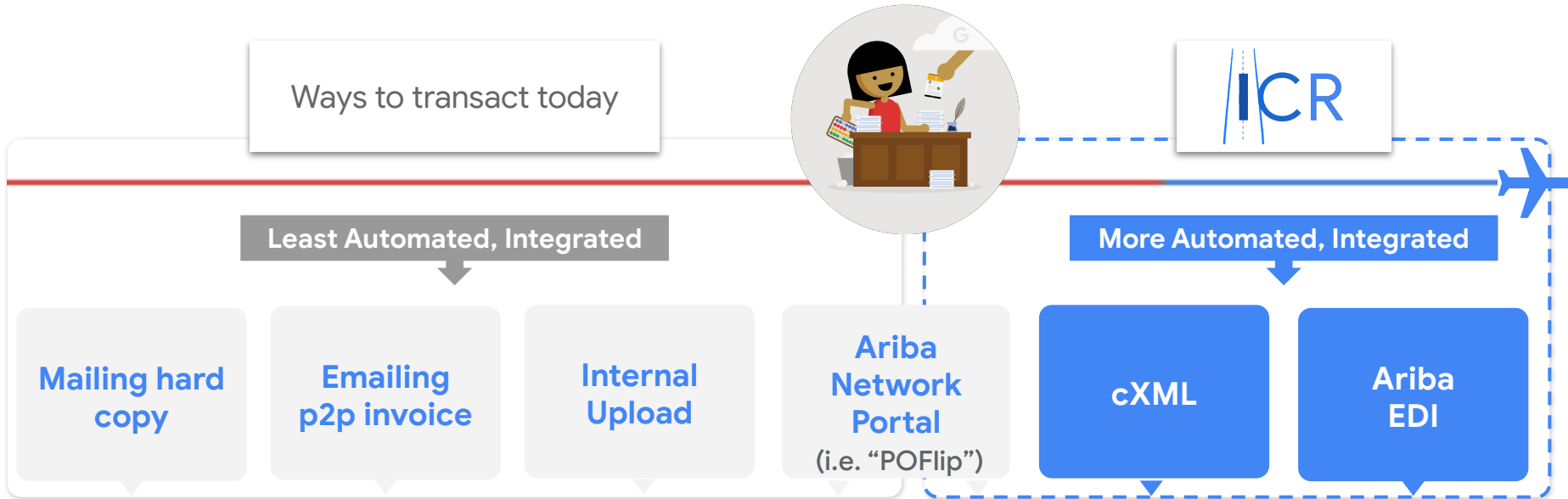
New **digital invoicing options** are unlocked through B2B Ariba Integration.

# Overview: Understanding B2B Ariba Integration

The slide features a vibrant red background. A large, white, semi-transparent circle is positioned in the lower-left quadrant. To its right, there are two smaller, solid red circles, one above the other, creating a decorative graphic element.



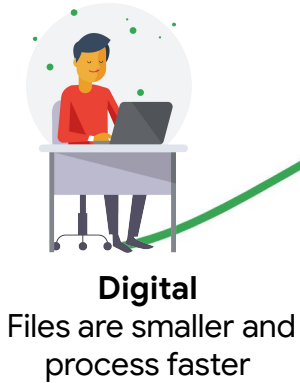
# New touchless options are available to integrate and transact with Alphabet/Google



Suppliers must have an [Ariba Network Enterprise \(paid\) account](#) in order to integrate.

# B2B Integration connects your purchasing systems to Alphabet/Google's Ariba Network to streamline transactions

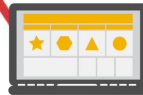
## B2B Integration



**Secure**  
Data is encrypted and passed across dedicated gateways



**Touchless**  
After set up, little or no human intervention is required



**Compliant**  
Files are archived long-term for global compliance



# Suppliers will experience benefits from their integration



## Efficiency and Accuracy

Increases PO, Invoice, and Payment acceptance by 45-60% by removing human errors



## Meet Compliance and Reporting Requirements

Long-term invoice archiving satisfies global compliance, reporting, transaction, and sales tracking



## Faster Processing

Touchless customer orders and invoices process 75% faster



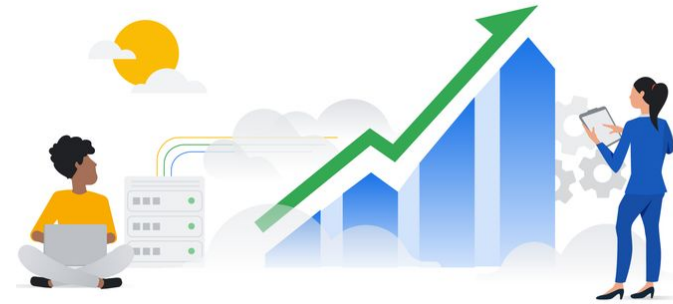
## Expanded Customer Service

Readily available Help Center, phone, chat, and webform



## Standardization

Beyond set up and planned updates, little maintenance is required - press play and go!



SAP Ariba offers Dynamic Discounting, a process that allows buyers and suppliers to negotiate a continuous, sliding-scale discount for early payment of invoices. This gives a high degree of flexibility to balance cash needs with savings, so everyone wins!

# Deep Dive: Types of B2B Ariba Integration



# Suppliers can choose to integrate with either Ariba EDI or cXML

## cXML

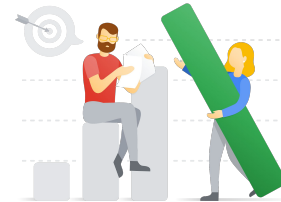
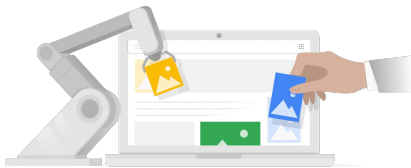
## EDI



Tell me  
more

- Newer technology used by Ariba Network
- Ease of customization

- Legacy technology in use since the 1960s
- Enabled early globalization



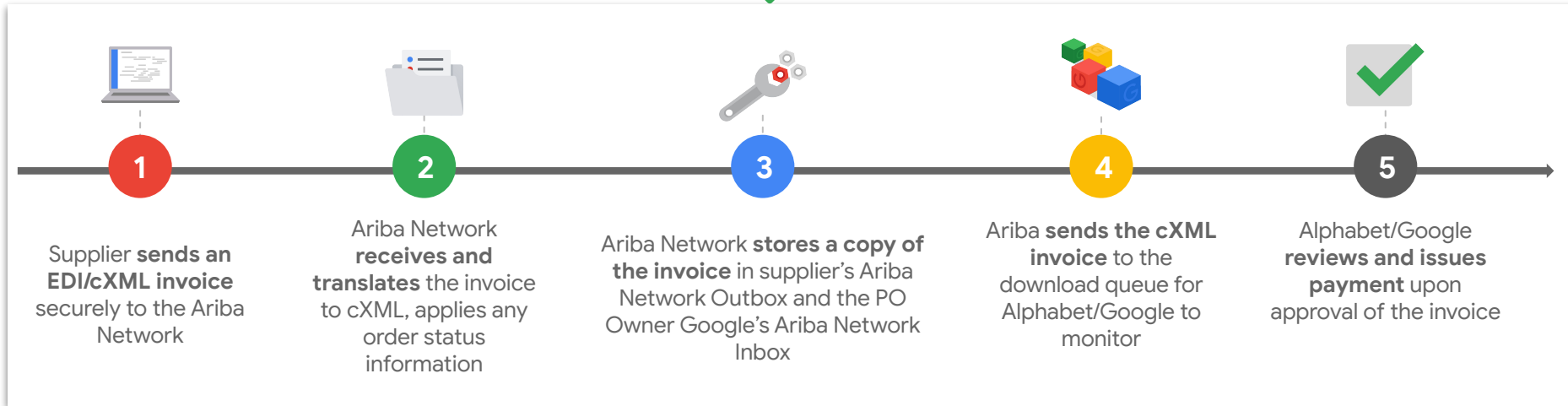
How you choose to integrate is your choice; the outcome is the same!

# B2B Ariba Integration enables a seamless invoice process



## Purchasing Documents

- ★ Purchase Orders (PO)
- ★ Invoices (EDI/cXML)
- Order Confirmation
- Ship Notice
- Credit Memo



★ Purchase orders and invoices are mandatory documents in integrating with Ariba Network

# B2B Ariba Integration Roadmap

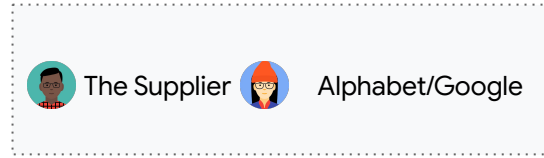
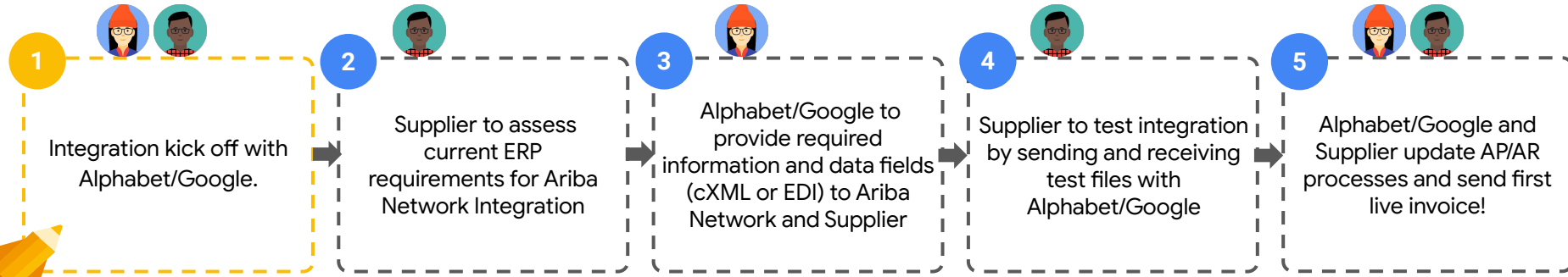
The slide features a bright yellow background. On the left side, there is a large, rounded yellow shape that curves towards the bottom right. Two circles of different sizes are positioned in the lower right quadrant of the yellow area: a larger, lighter yellow circle above a smaller, darker yellow circle.

# How will Suppliers be selected to participate?





# Setting up a B2B integration will take between 4-12 weeks



# How to be considered for this new invoicing initiative?



## **Socialize the info session content with the right members of your organization**

Keep your organization informed as key members of your organization may have knowledge on choosing the invoice options that is the best fit.



## **Reach out to Alphabet/Google with any questions you may have ([icr-contact@google.com](mailto:icr-contact@google.com))**

We anticipate that you having questions along the way, so we are here to help you through the process.



## **Be sure to have completed your Integration Interest questionnaire**

If you have not done so, let us know that you want to be a part of this new initiative!

Q & A



**Thank you!**



# Appendix

# What is the Cloud Integration Gateway (CIG)?

