

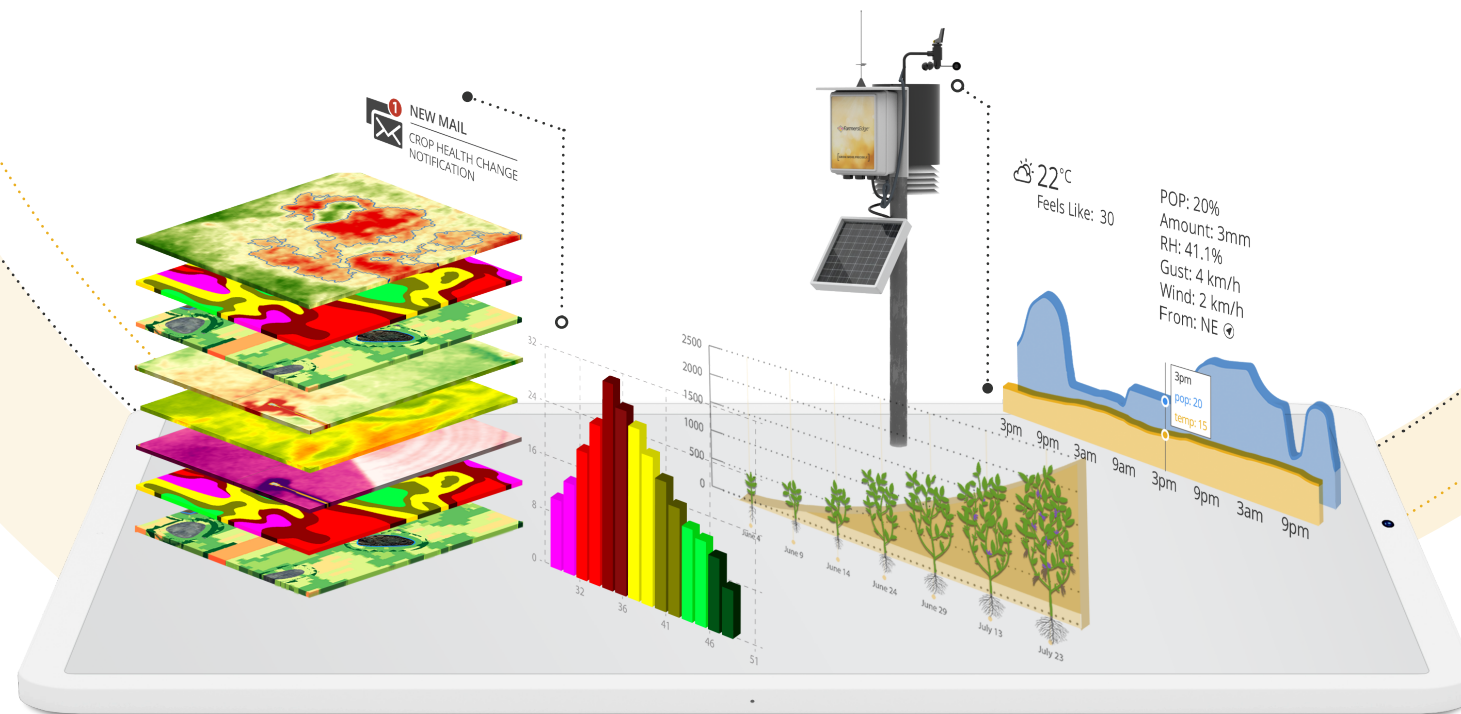
FARMCOMMAND[®]

FARMCOMMAND®

FarmCommand is the industry's most comprehensive digital platform. Vertically integrated and driven by full-farm connectivity, the platform provides a unified, 360-degree stakeholder view to enhance how growers, agricultural professionals and agri-businesses interact with data. Combining robust data sets, unique digital infrastructure and machine learning, FarmCommand provides an intuitive user experience complete with real-time insights and highly precise predictive intelligence. Advanced digital tools address all areas of crop production, from seed selection to yield data analytics, to deliver unparalleled decision-support for all stakeholders.



Available as a web-based tool, mobile app and universal terminal.



FEATURES

- Superior performance
- Science-based insights
- Mixed-fleet compatibility
- Passive data collection
- Custom notifications
- Unique user privileges
- Safe and secure
- Data visualization

DIGITAL AGRICULTURAL ECOSYSTEM

Integrating all areas of farm management, FarmCommand enables new, dynamic connections across the digital agricultural ecosystem.

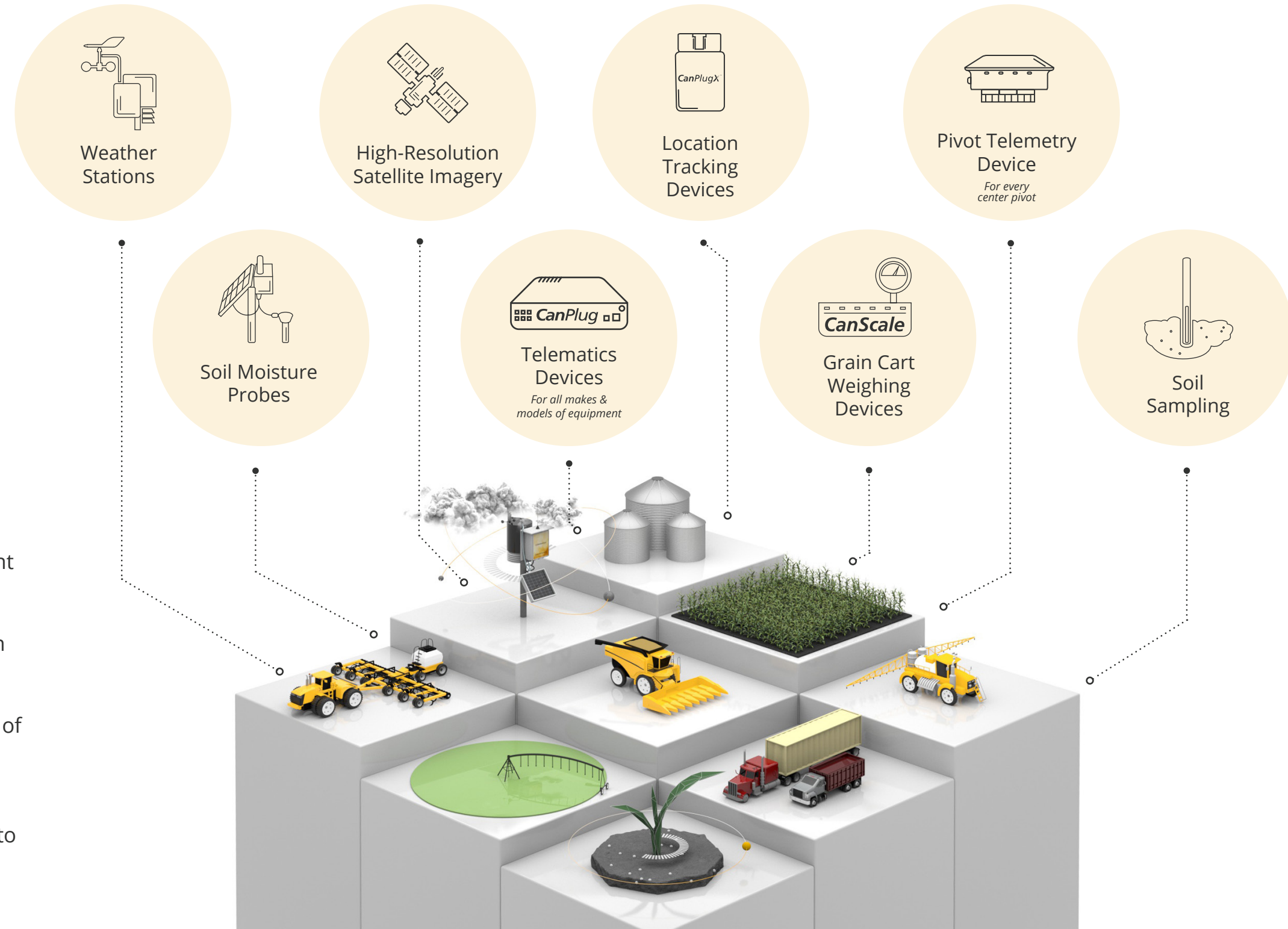
The platform is equipped with advanced features to help growers form secure connections with their trusted advisors to meet the evolving challenges across the farm. This enhanced level of connectivity simplifies record-keeping, improves risk management and establishes transparent opportunities to increase profitability.



DATA MANAGEMENT

FarmCommand takes the headache out of data management with a full-service, three-step approach:

- STEP 1:** Precision Technology Specialists install and maintain on-farm hardware to collect field-centric data.
- STEP 2:** FarmCommand automatically integrates all sources of data into one consistent format.
- STEP 3:** Rapid data processing, advanced analytics, artificial intelligence and machine learning transform data into valuable insights.

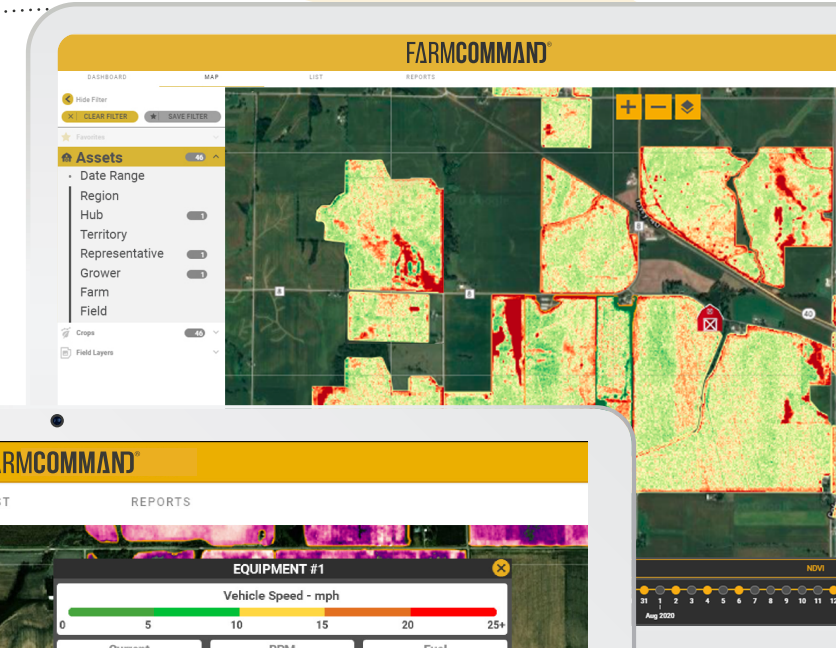
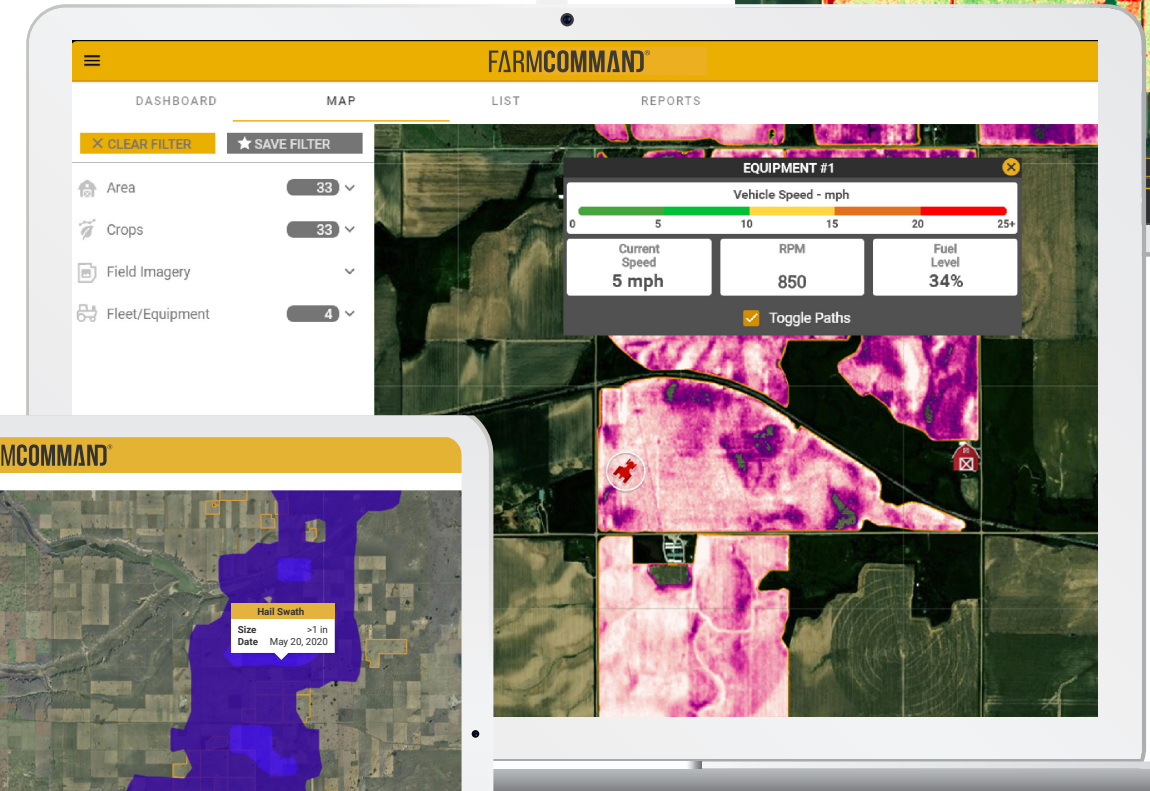
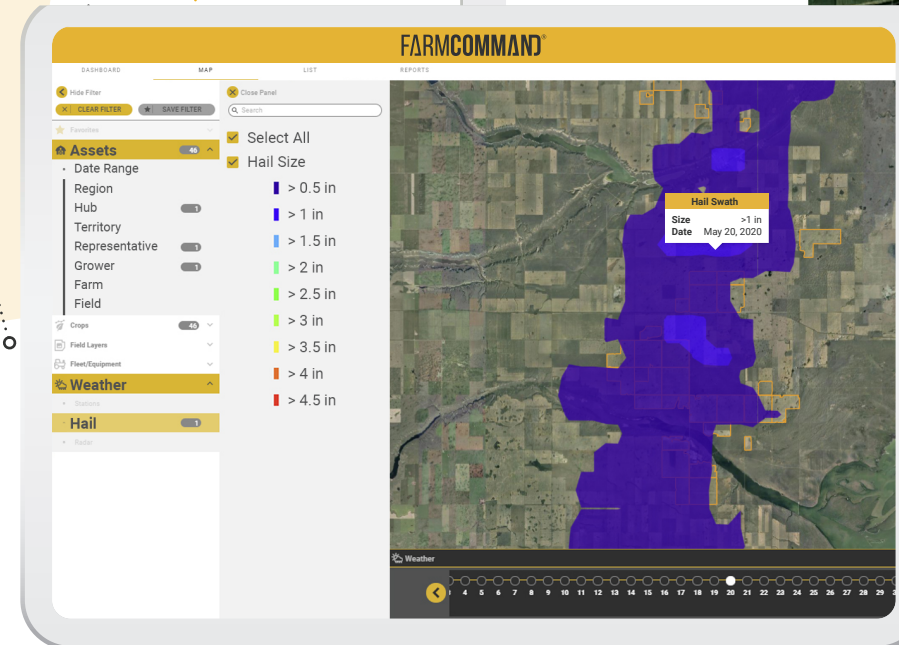


FARMCOMMAND CENTER

FarmCommand Center makes discovering and sharing insights faster. With supercharged speed, a simple layout and advanced search and filter functionality, you can manage all farms, fields, equipment and other assets in one view, with less clicks. Filter fields in seconds by cropping information, status, crop health, risk exposure and equipment activity to support effective planning and management.

FEATURES

- One-click imagery by crop for multiple farms and fields
- Enhanced fleet experience with detailed path and attribute filtering
- Severe weather monitoring
- Automatic hail detection
- Custom labels and views



WEATHER

FarmCommand includes access to a network of advanced on-farm weather stations and temperature inversion towers to support crop monitoring and operational decisions.

FEATURES

- Tailored weather notifications
- Real-time conditions
- 10-day daily forecasts
- 48-hour hourly forecasts
- Enhanced radar
- Rainfall
- Delta-T conditions
- Humidity
- Historical weather data
- Hail detection and severe weather notifications

Average ROI: \$1.26/acre
Acres Tested: 12.8 MM

The image illustrates the FarmCommand weather management system. On the left, a weather station tower is shown with a solar panel and a weather sensor. In the center, a smartphone displays the FarmCommand app interface, showing a weather map and summary. On the right, a laptop displays the FarmCommand web interface, showing a dashboard with weather data for multiple locations, a daily temperature line graph, and a daily rain bar chart.

Weather Station Data:

- Temp: 22°C
- Feels Like: 30
- POP: 20%
- Amount: 3mm
- RH: 41.1%
- Gust: 4 km/h
- Wind: 2 km/h
- From: NE

Smartphone Data:

- Summary: Temp, Rain (Day), Rain (Hour), Wind
- Map: 8:30 AM, 11:30 AM, 2:30 PM
- Speed: 2.54, 406.4 mm/h

Laptop Data:

Weather Manager - FARMCOMMAND

Location	Weather	Temp	Humidity
Warwick ESE	MOSTLY CLOUDY	-6.4 °C	62 %
Fallison WSW	PARTLY CLOUDY	-0.4 °C	86 %
Oak Bluff ENE	SUNNY	-5.3 °C	89 %
San Souci WSW	SUNNY	-7.2 °C	91 %
Riverton SSW	SUNNY	-10.3 °C	-

Daily Temperature Graph:

- Max Temp: 22.4 °C
- Avg Temp: 19.1 °C
- Min Temp: 16.2 °C

Daily Rain Graph:

- 77mm
- 40mm
- 20mm
- 0mm

Layer weather data with equipment data to easily review and analyze the effect weather conditions have on field activities, equipment performance and yield. This layered data supports future farm management decisions, including: application timing, input selections and equipment trades or purchases.

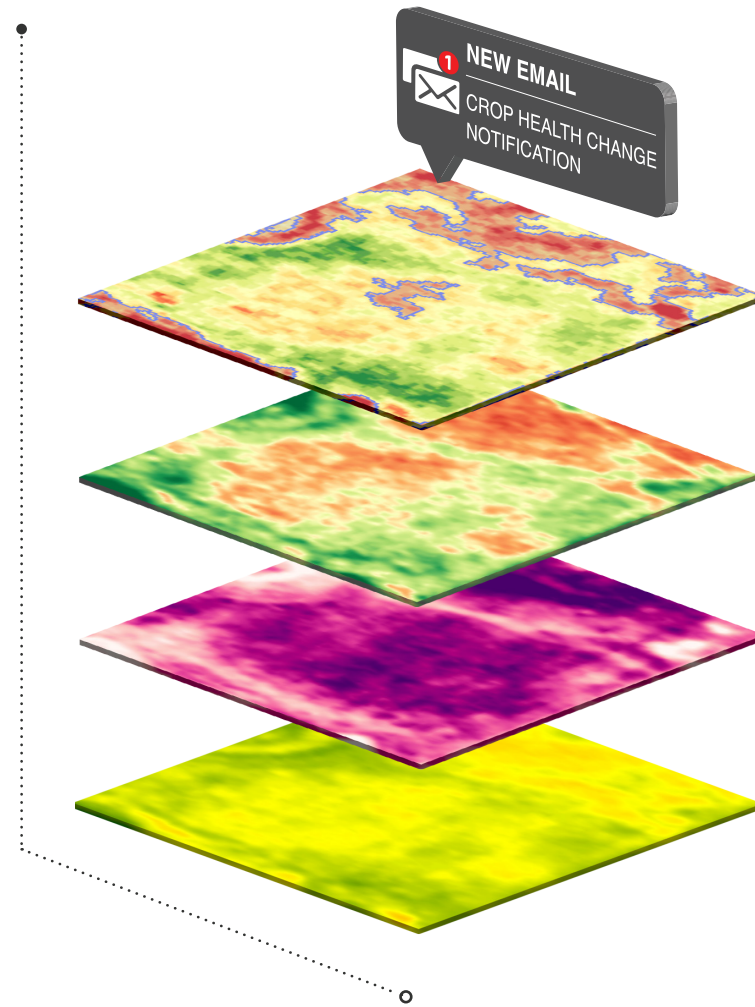
SATELLITE IMAGERY

FarmCommand transforms imagery into timely, field-level insights to help monitor crops, identify yield threats and understand the impact of environmental or operational damage.

FEATURES

- High-resolution
- Rapid data processing
- Easy-to-read map layers
- Automatic crop health change detection
- Cloud-masking and shadow identification
- Split-screen view for side-by-side comparisons

Average ROI: \$3.25+/acre
Acres Tested: 6.4 MM

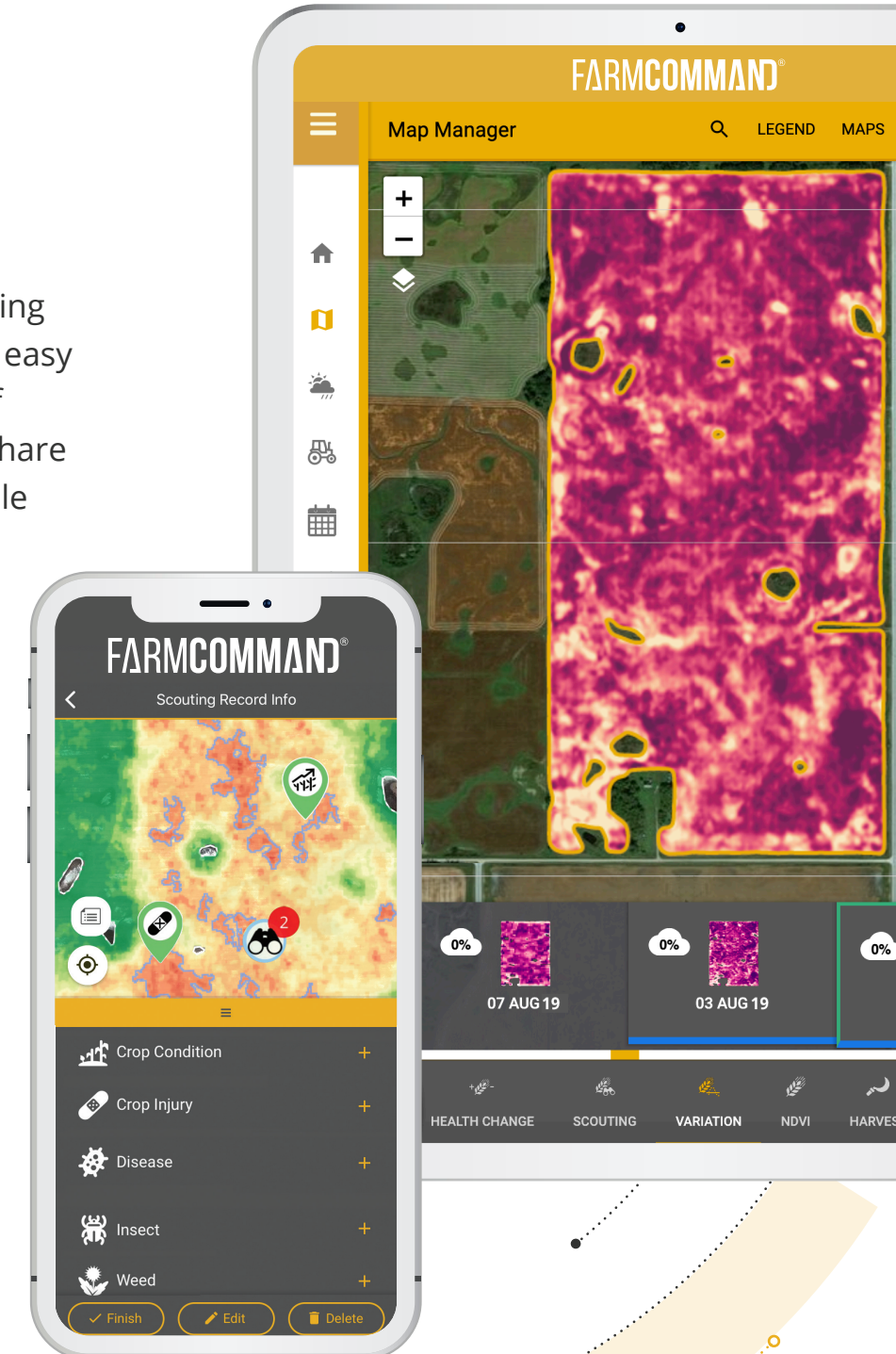


SCOUTING

FarmCommand improves workflow and increases the efficiency of scouting activities. The scouting tool makes it easy to pinpoint issues, prioritize areas of investigation, record observations, share information with a team and schedule corrective actions to protect yield.

FEATURES

- GPS navigation
- Pest and disease identification
- Observation management
- Information sharing
- Scheduling and planning



EQUIPMENT

Powered by CanPlug™, an in-field telematics device, FarmCommand connects a mixed-fleet to provide a complete overview of every machine, operator and field activity, from inside and outside of the cab.

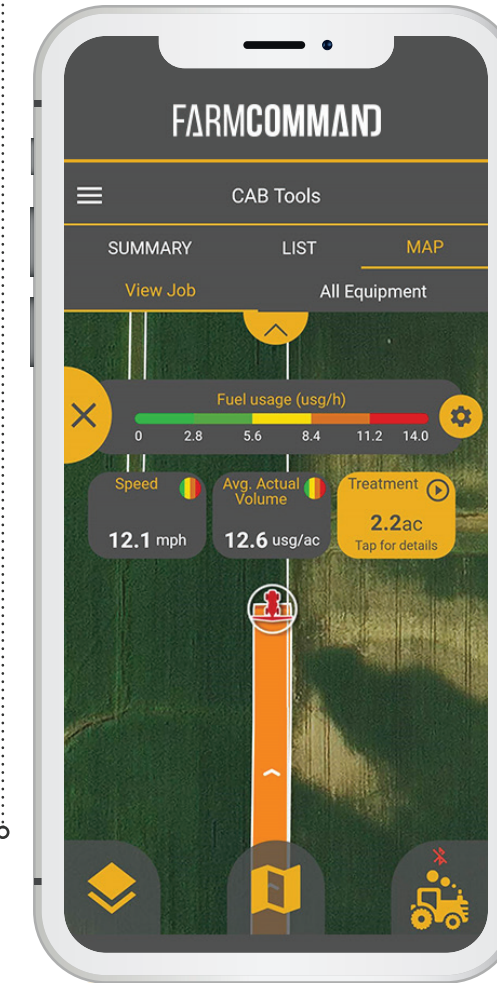
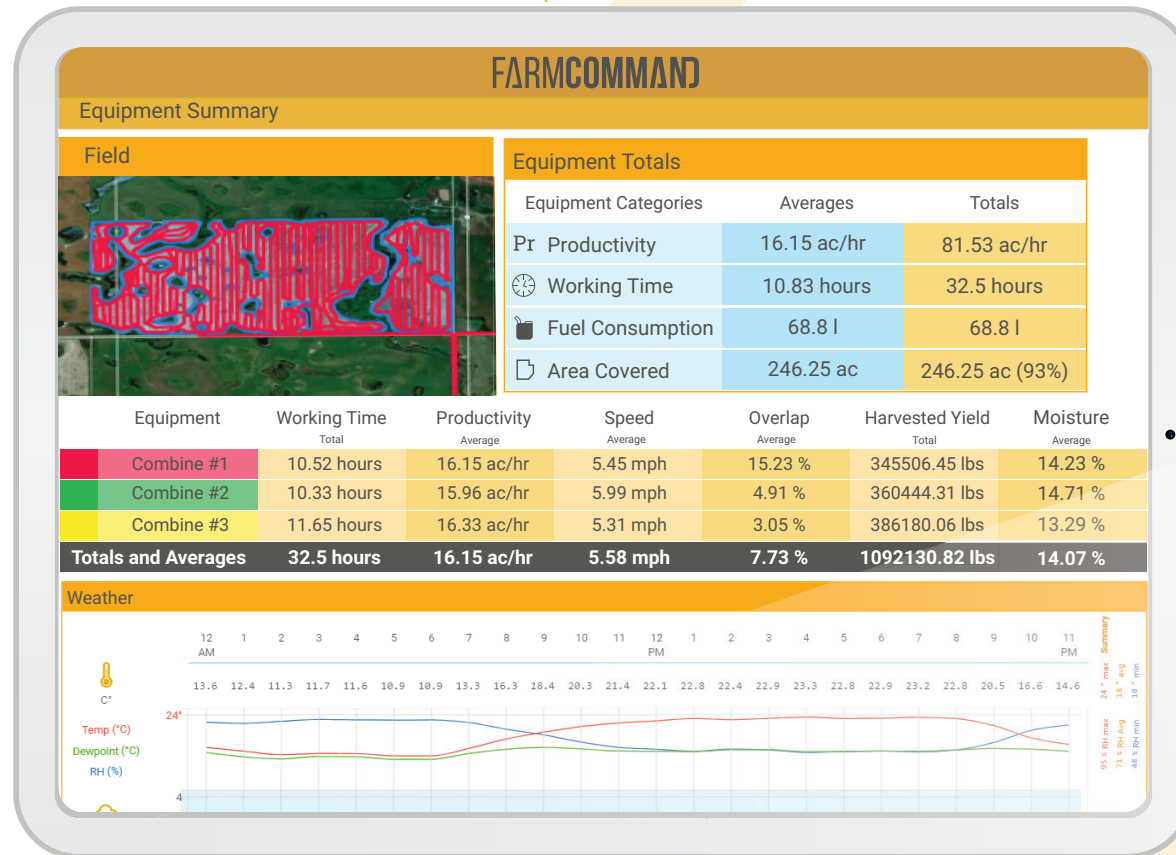
FEATURES

- Live equipment tracking
- Historical paths
- Equipment health monitoring
- Notifications and alerts
- Field activity reporting
- Simplified record-keeping
- Integrated weather data for advanced analysis

Average ROI: \$.75+/acre
Acres Tested: 12.8 MM

IN-CAB

The FarmCommand In-Cab Tool can be used in the cab or remotely to monitor field activities, plan jobs and make changes on the go. Using CanPlug, FarmCommand streams real-time equipment values along with planting, spraying, fertilizer application, harvest and field maintenance data.



FEATURES

- Optimized for in-cab decision support
- Operator and manager views
- Simplified record-keeping
- Scheduling and logistics tracking
- Automatic data calibration
- Job status updates and notifications

FLEET MANAGEMENT

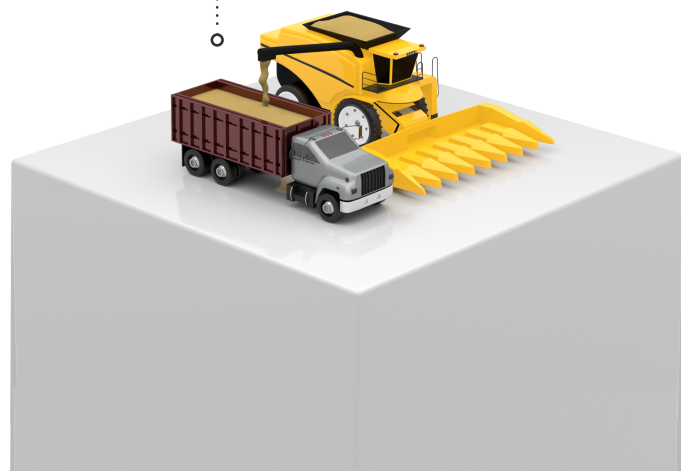
Powered by CanPlugX™, a location tracking device, FarmCommand provides an integrated fleet management program for real-time visibility of grain carts, service trucks, construction equipment, irrigation systems and more.

FEATURES

- Live performance tracking
- Mixed-fleet compatibility
- Remote scheduling and monitoring
- Automated workflow
- Hazard detection and notifications
- Secure record-keeping and management



TYPE: GRAIN TRUCK
STATUS: LOADING



CROP PLANNER

FEATURES

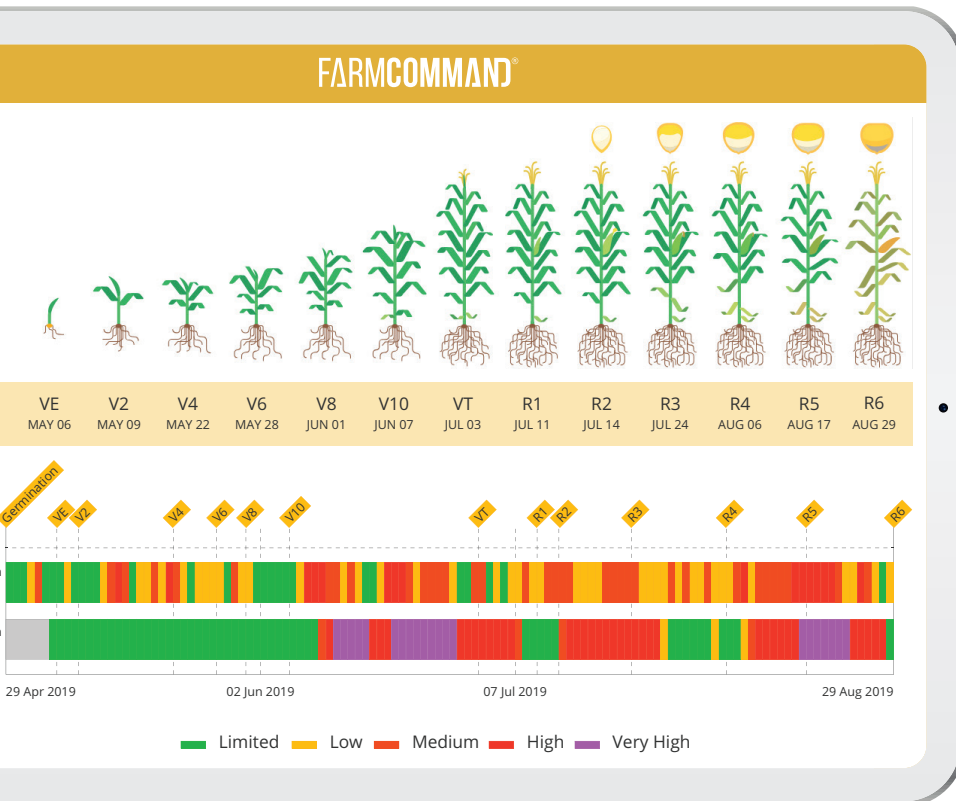
- Assign supplies and rates to applications
- View subtotals by plan, field or supply type
- Real-time, accurate analysis
- Detailed and condensed cost summaries
- Exportable crop plan reports
- Seamless sharing with trusted advisors

Effective planning is the key to a successful season. FarmCommand features planning tools to analyze various operational scenarios, including crop rotations, variety/hybrid selections, chemical applications and more, to help understand potential costs and outcomes.

CROP PLANS		FARMCOMMAND®			
		Cost Subtotal			
		Seed	Chemical	Fertilizer	Total
<input type="checkbox"/>	LRF WHEAT	\$1,792.63			\$1,792.63
<input type="checkbox"/>	Thompson		\$1,846.73	\$8,963.16	\$10,810.00
<input type="checkbox"/>	28		\$923.18		\$923.18
<input type="checkbox"/>	202		\$407.87		\$407.87
<input type="checkbox"/>	202		\$608.60		\$608.60
Field Totals		\$1,792.63	\$3,786.37	\$8,963.16	\$14,542.16
		\$2,187.66			\$2,187.66
Field Totals				\$10,938.31	\$10,938.31
			\$2,253.68		\$2,253.68
			\$1,126.61		\$1,126.61
			\$497.74		\$497.74
			\$742.71		\$742.71
Field Totals		\$2,187.66	\$4,620.74	\$10,938.31	\$17,746.72

PREDICTIVE MODELING

Driven by field-centric data, sound agronomy, machine learning and AI analytics, FarmCommand provides predictive models to support scouting accuracy, application timing and threshold identification.



Average ROI: \$7.75/acre
Acres Tested: 11.9 MM

BENCHMARKING

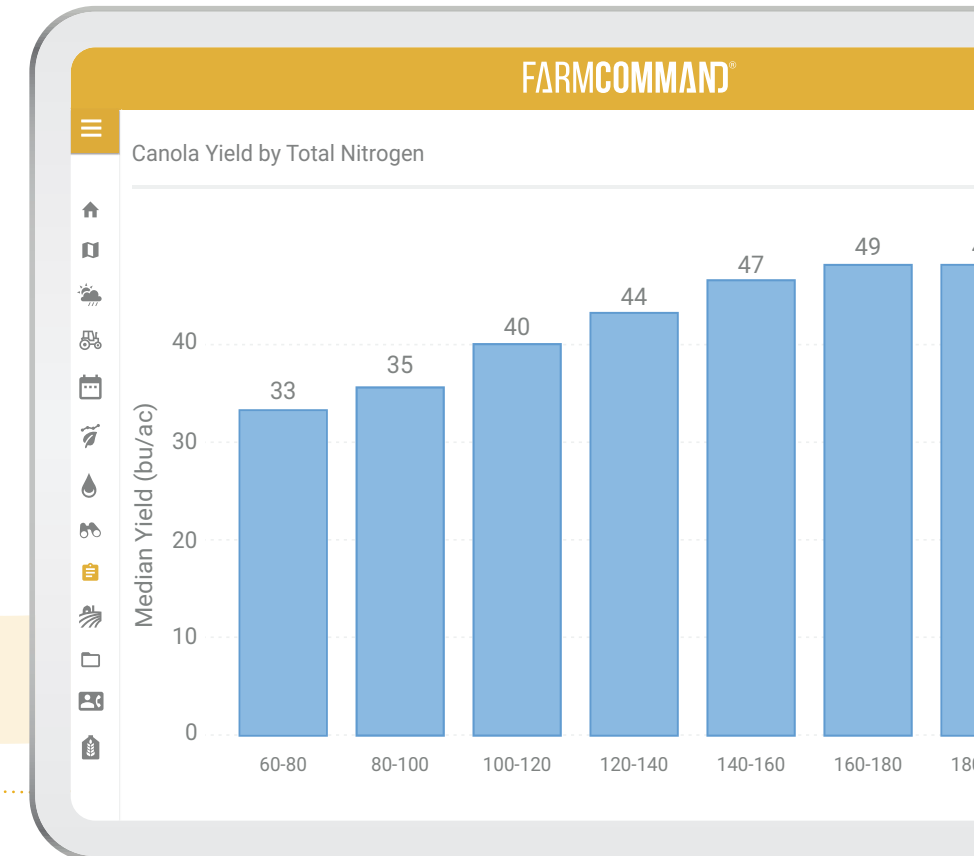
FarmCommand provides access to unbiased seed and variety performance data to support seed selection and crop rotation decisions.

FEATURES

- Growth stage models
- Disease models
- Pest and insect models
- Growth stage notifications
- Growing degree day predictions
- On-farm weather data
- Ground-truthed models

FEATURES

- Tens of thousands of fields
- Independent data sets
- Regional and on-farm reporting
- Agronomic analytics
- Performance data by plant date, organic matter, total nitrogen, precipitation, seeding rate, crop rotation and more

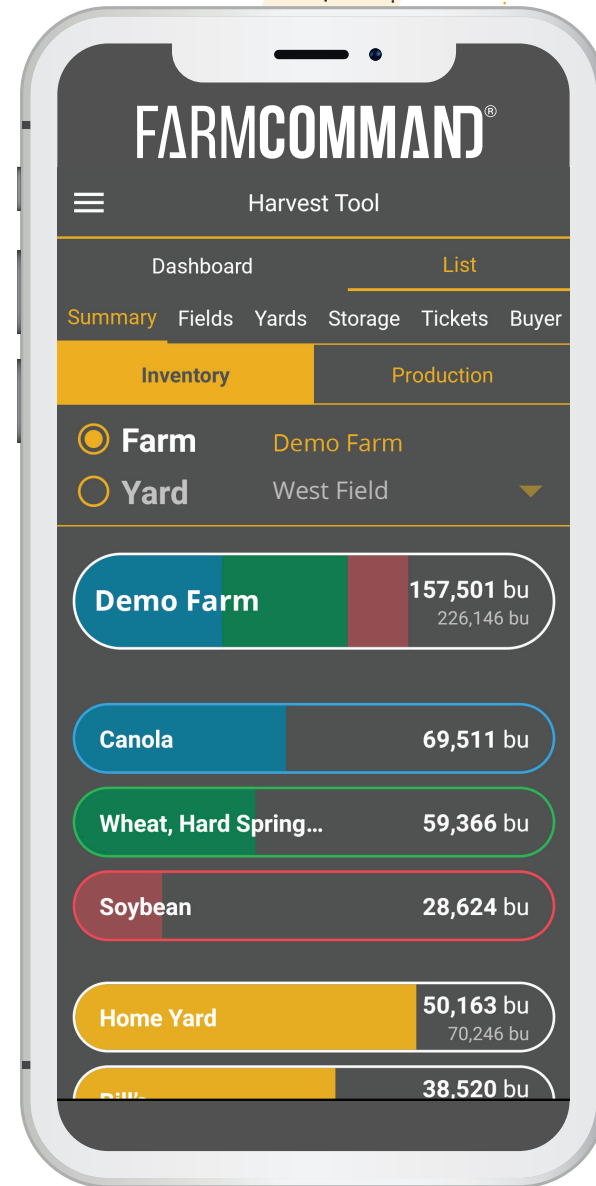


Average ROI:
 Minimum - \$5/acre
 Maximum - \$120/acre
Acres Tested: 6.4 MM

ANALYTICS & REPORTS

FarmCommand includes a suite of reporting features to help analyze the cost of every decision.

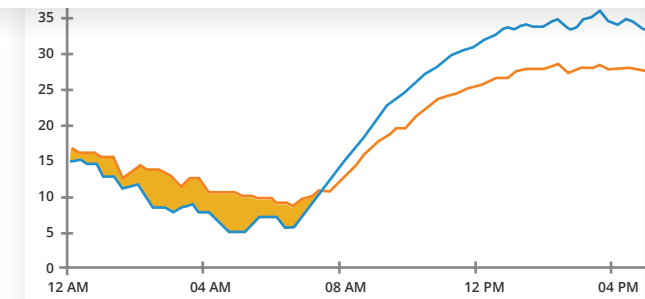
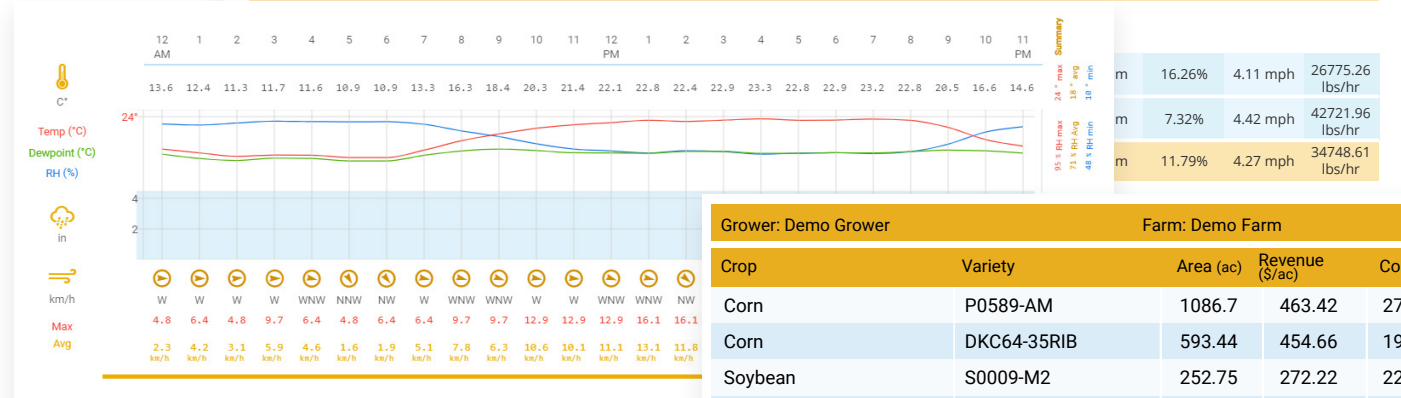
- Crop planning
- Historical weather
- Equipment
- As-applied
- Crop stages
- Scouting
- Field activity
- Yield
- Grain logistics
- Profit



Equipment Summary

Equipment Breakdown By Field

Sep 28, 2019	Productivity	Working Time	Fuel Consumption	Harvested Yield	Moisture	Area Covered	Engine RPM	Distance Travelled	Overlap	Speed	Yield Rate
Equipment	Average	Total	Total	Total	Average	Total	Average	Total	Average	Average	Average
Combine #1	13.38 ac/hr	1.39 Hours	75.85 litres	35562.07 lbs	12.16%	18.53 ac	2286.51 rpm	12885.12 m	4.46%	3.24 mph	25642 lbs/hr
Combine #2	18.1 ac/hr	1.6 Hours	81.38 litres	73072.89 lbs	13.73%	27.88 ac	2186.69 rpm	18245.28 m	3.32%	3.81 mph	45785.08 lbs/hr
Totals and Averages	15.74 ac/hr	2.99 Hours	157.24 litres	108654.96 lbs	12.95%	46.41 ac	2236.6 rpm	31130.40 m	3.89%	3.53 mph	35713.52 lbs/hr



Grower: Demo Grower		Farm: Demo Farm		Season:	
Crop	Variety	Area (ac)	Revenue (\$/ac)	Cost (\$/ac)	Profit (\$/ac)
Corn	P0589-AM	1086.7	463.42	275.23	188.19
Corn	DKC64-35RIB	593.44	454.66	195.09	259.57
Soybean	S0009-M2	252.75	272.22	226.46	45.76
Soybean	S007-Y4 Brand	392.58	277.2	149.78	127.42
Soybean	TH 87003 R2X Brand	455.72	231.12	162.54	68.58
Wheat, Hard Spring Wheat	AAC Brandon	944.25	451.02	202.2	248.82
Wheat, Hard Spring Wheat	AAC Tisdale	338.31	334.34	177.18	157.16
Crop	Variety	Area (ac)	Revenue (\$/ac)	Cost (\$/ac)	Profit (\$/ac)
Soybean	TH 87003 R2X Brand	121.54	222.3	143.44	78.86
Soybean	S007-Y4 Brand	101.11	214.26	146.67	67.58
Soybean	S0009-M2	252.75	272.22	226.46	45.76
Soybean	S007-Y4 Brand	291.47	299.03	150.86	148.18
Soybean	TH 87003 R2X Brand	90.2	239.77	176.77	63
Soybean	TH 87003 R2X Brand	243.98	232.31	166.79	65.52



AUTOMATED INSURANCE REPORTING AND CLAIMS

Farmers Edge provides an end-to-end digital solution that simplifies and enhances crop insurance processes. This innovative technology digitizes the flow of insurance data, automates acreage and production reporting and powers efficient claims management.

FEATURES

SMART REPORTING

- Automatically collects and validates data required for crop insurance to minimize paperwork
- Records planting events per day to ease reporting for acreage by field, replanting first crop/second crop reporting, prevented planting and more
- Creates a secure, seamless connection between growers and agents to automate reporting

SMART CLAIM

- Simplified, claims management, from detection to payout
- Severe weather event notifications, including hail, heavy rainfall, high heat, frost warning and high wind gusts
- Unique imagery-derived map layers and automatic crop health change detection tools to assess potential crop damage

The screenshot displays the FARMCOMMAND interface with several key components:

- Dashboard:** Includes a search bar, filter options (CLEAR FILTER, SAVE FILTER, APPLY FILTER), and a sidebar menu with categories like Area, Dates, Crops, Field Layers, Satellite Imagery, Crop Health Change, Applied, Grain, Profit, and Zones.
- Table: Estimated Volume**

(bu/ac)	(ac)
<= 32.31	13.80
32.31 - 41.91	46.97
41.91 - 48.67	80.28
48.67 - 55.65	74.91
> 55.65	37.76
- Map:** A satellite-style map showing a field with a color-coded overlay representing crop health or yield data.
- Table: Operation Summary**

Crop:	Wheat, Hard Spring Wheat
Product:	TORACH WHEAT
Field Area (ac):	291.47
Coverage Area (ac):	284.65
Overlap Area (%):	10.43
Yield Target (bu/ac):	UNKNOWN
Average Rate (bu/ac):	132.14
Std. Dev. (ac):	76.33
Total Product (lb):	37614.57
- Table: Application Amount**

(lb/ac)	
<= 88.05	0
88.05 - 99.07	0
99.07 - 110.09	0
110.09 - 121.12	1
121.12 - 132.14	0
132.14 - 143.17	6
143.17 - 154.19	2
154.19 - 165.22	0
165.22 - 176.24	0
> 176.24	1
- Table: Acreage Report Source Document**

Grower: John Smith | Grower ID: 000000 | Farm: SMITH | Date Range: Jan 1, 2021 - Dec 31, 2021
Generated: 2021-05-26 09:46 | Total Planted Area: 41.88 ac | Policy Number: 12-345-6789455-21

Crop Type	Total Planted Area (ac)
Corn, Grain	402.60
Soybean	65.20
- Table: Date Variability**

Date	(ac)
Sun May 17 2020	211.55
Mon May 18 2020	74.70

SMART CARBON

A simple program that makes sense and money.

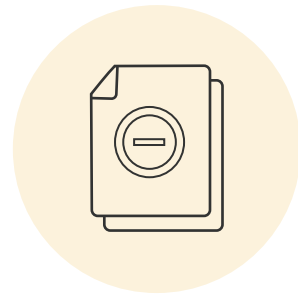
Every farm is unique and thus requires a custom approach. Our simple program brings together sustainability, productivity and profitability to help growers get the most value from every acre. Whether growers are looking to sell carbon offsets now or later, produce high-quality, eco-friendly grain, scale their farming operation and everything in between, we have a solution.



Superior position in the marketplace

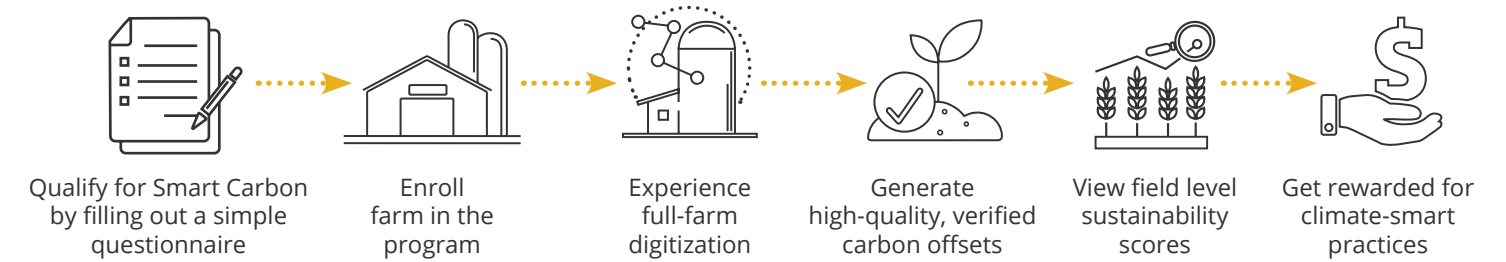


New revenue stream



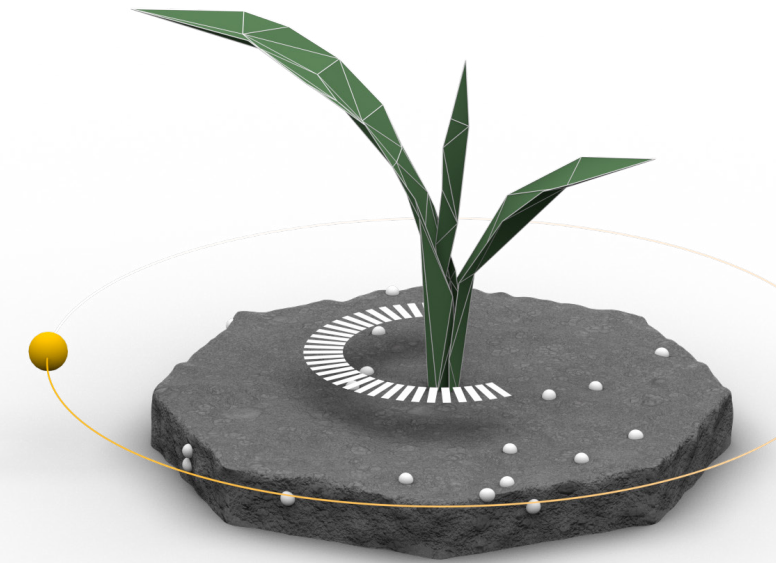
Less paperwork from start to finish

HOW SMART CARBON WORKS



WHICH PRACTICES QUALIFY?

- Moving from reduced tillage to no-till
- 4R nitrogen practices
- Placing fertilizer in a band below ground (some in-crop surface applications are acceptable)
- Applying enhanced efficiency nitrogen fertilizer



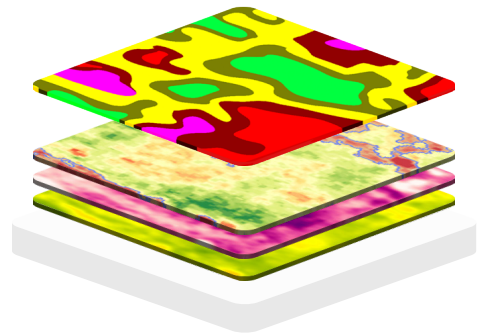
REQUEST A COMPLIMENTARY CARBON ASSESSMENT.

We'll review current and historical practices of the farm to help growers understand the carbon potential of their land.

VARIABLE RATE TECHNOLOGY

Improve sustainability with a custom precision fertility program that is data-driven and tailored to your unique yield and profitability goals.

STEP 1: SOIL SAMPLING



ZONE MANAGEMENT PLAN

Enhanced Zone Maps are derived from high-resolution satellite imagery, historical records and elevation data to identify high and low productivity areas in the field. These areas are then soil sampled to identify available nutrients.

Accurate soil sampling translates into higher productivity and better yields. In the first year, we test all acres. In the following years, we combine Actual Soil Testing (AST) with Virtual Soil Testing (VST) - a time-saving technology that combines current weather data with historical crop, yield and environmental data to predict field nutrient levels.

SOIL ANALYSIS

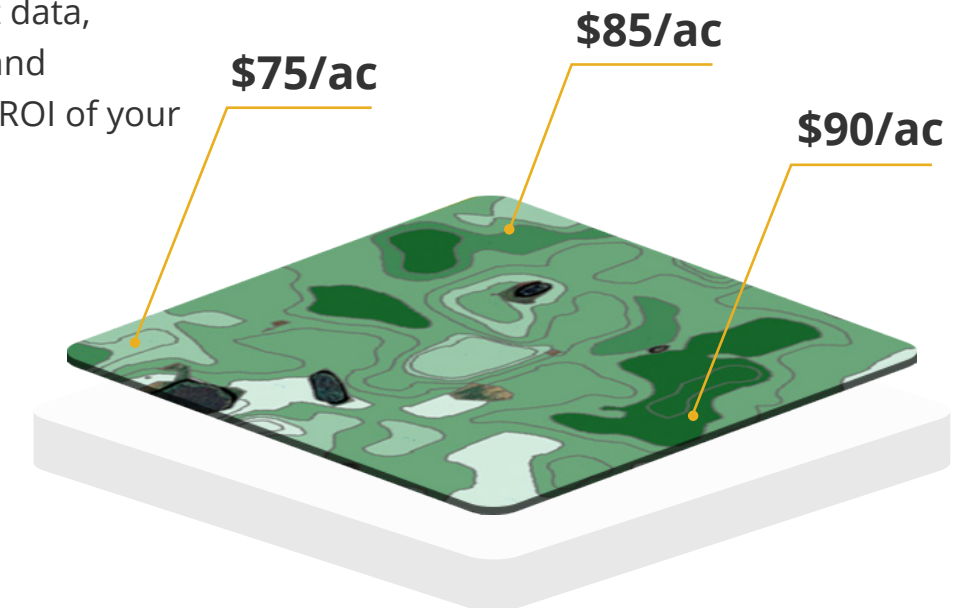
Soil samples are sent to Farmers Edge Laboratories and are tested for:
0-6" depth: NO₃-N, P, K, SO₄-S, pH, EC, OM, B, Cu, Fe, Mn, Zn, Cl, BS, CEC
6-24" depth: NO₃-N, SO₄-S, Cl, pH, EC

STEP 2: PRESCRIPTION MAPS & FIELDREADY™

Working closely with you or your trusted advisors, we create an agronomic plan that matches zone-derived productivity areas to yield targets and product requirements. Along with unlimited VR prescriptions for seeding, fertilizing, herbicide, plant growth regulators, fungicide and desiccation, you can also access on-demand Zone Maps for in-season VR crop protection applications. Precision Technology Specialists visit your farm to prepare equipment and ensure data is logging before each field operation.

STEP 3: PROFIT MAPS

Complete your season with metrics to guide next year's planning. Profit Maps integrate application prescriptions, harvest data, commodity costs, product costs and check-strip data to show you the ROI of your variable rate decisions.



TESTIMONIALS

“With an ever-changing agricultural landscape, the need to accurately place your investments is becoming more important and using Farmers Edge digital tools allows me to do that. I can identify risks and analyze the ROI every growing season.”

CURTIS MCRAE, CANADA

“FarmCommand makes it easy to monitor my fields from anywhere. I use the map layers to find potential problem areas without leaving my kitchen table. Plus, the imagery picks up biomass in my fields so I can find the biggest ears for local bragging rights. I drop a pin and the GPS takes me right to it.”

DEREK KLINGENBERG, USA

“Pulling data from a tractor does not rank high on my to-do list, but with FarmCommand, this data is automatically transferred and accessible to me in one simple platform. I can pull reports and easily compare equipment performance in a consistent format.”

ANDREW CLARKE, USA

“In agriculture, everything is about next year. Farmers are always looking for ways to make better decisions for the future and using FarmCommand makes it easy to analyze my data so I can make adjustments where necessary. Tools like growth stage models, yield predictions, Scouting Maps, As-Applied Maps, Yield Maps and equipment historical paths offer great insights to help me make more profitable decisions.”

LYLE KINNAIRD, CANADA

SUPPORT & TRAINING

FarmCommand is backed by a dedicated, local team to provide support and training every step of the way. This full-service, personalized approach simplifies digital agriculture. Combining the professional expertise and guidance of technology specialists, data scientists, agronomists and client success managers, FarmCommand ensures a turnkey experience for all users.



Professional installations



Dedicated support line



Same-day service



Boots-on-the-ground data validation



Video tutorials



How-to guides



Educational webinars



Custom training programs

ABOUT FARMERS EDGE

In 2005, Farmers Edge brought Variable Rate Technology to growers in Canada.

Today, Farmers Edge is known as the world's most respected leader in digital agriculture delivering unprecedented value to growers and agricultural professionals worldwide. Recognizing the effect data has on decision-making and profitability, Farmers Edge provides the industry's most comprehensive digital platform leveraging the latest innovations, data science and AI technologies.

Combining field-centric data, satellite imagery, easy-to-use software, predictive modeling, agronomy and advanced analytics, Farmers Edge delivers a seamless digital experience that transforms information into actionable insights to inform decisions, minimize environmental impact and protect economic viability of the farm.

GRASS ROOTS



Founded by two agronomists, Farmers Edge was born out of a grassroots passion for agriculture and built from the ground up with a vision to help growers produce more with less.

INDEPENDENT & SECURE



Works with any brand, make or model of equipment and the grower is always the sole and exclusive owner of their data.

REAL BOOTS-ON-THE-GROUND



Hands-on service to help growers adopt new technology and receive quality support every step of the way.

DATA QUALITY & FIELD-CENTRIC APPROACH



Data is accurate, valid, reliable, complete, free from bias and consistent. Field-by-field, zone-by-zone, Farmers Edge collects, transfers, manages and analyzes data safely and securely.

INTEGRATED



The most complete solution available in precision agriculture that combines hardware, software, agronomy and support to address major variables of crop production.

AI-DRIVEN



Leveraging advances in machine learning and AI, Farmers Edge applies analytics to all data to form predictive models and valuable insights that lead to better decisions and actions.



Start Your Digital Journey

1-866-724-3343 | www.FarmersEdge.ca | Info@FarmersEdge.ca | [@farmers_edge](https://twitter.com/farmers_edge)