

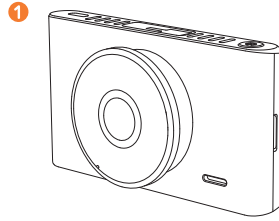
**ROAV**

Model: R2210  
51005000652 V01

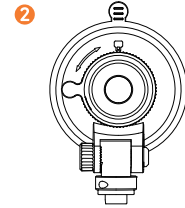
**ROAV**

**Owner's Manual**

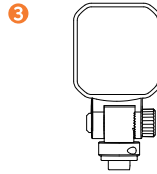
**DASHCAM C2**



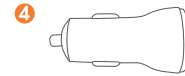
DashCam



Suction mount



Mount



Car charger



Charging cable



Crowbar



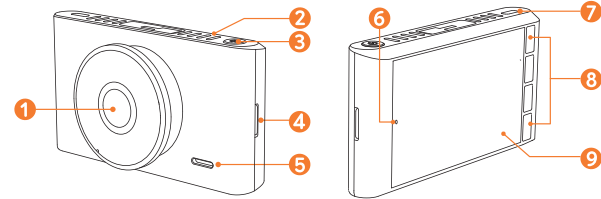
Manual

## Safety Instructions

Please read and understand all instructions before using this product. If damage is caused by failure to follow the instructions, the warranty does not apply.

- Keep these instructions.
- Do not drop, puncture or disassemble this product.
- This product shall not be exposed to dripping or splashing.
- Avoid long exposure to direct sunlight, which may cause damage.
- Exposing this product to open flames may cause explosion.
- Use original accessories only.
- Do not install this product where it will block the driver's view of the road or the deployment of the airbag.
- Keep your attention on the road. Do not operate the controls of this product while driving.
- Ensure the camera lens is kept clean and there is nothing blocking the lens.
- Setup time and date accurately before using this product.
- Do not use the charger if the cord is damaged or broken.
- Remove this product from your vehicle when not in use for a long period.
- Keep out of reach of children.
- Use clean, soft cloth to clean. Do not use any corrosive cleaner/oil to clean.
- The Company is NOT responsible for the loss of any data/content during operation.

## At a Glance



- 1 Camera lens
- 2 Air vent
- 3 Power button
- 4 Memory card slot
- 5 Speaker
- 6 LED indicator
  - Flashing blue: recording in progress
  - Steady red: no recording status
- 7 Micro USB charging port
- 8 Touch buttons
- 9 LCD screen

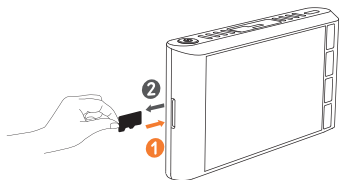
## Inserting Memory Card



Do not remove or insert microSD / TF card when this product is powered on, which may damage the card.

For reliable operation, use a Class 10 microSD / TF card. For a 64GB/128GB card, format it before using. It is recommended to format the card regularly.

Card Capacity	1080P 30FPS	720P 60FPS	720P 30FPS
32 GB	320 min	360 min	480 min
64 GB	640 min	720 min	960 min
128 GB	1280 min	1440 min	1920 min



- 1 Insert a microSD / TF card with the gold contacts facing the screen side of the DashCam. Push the card until it clicks into place.
- 2 To remove the card, gently push its top edge inward until it clicks, and then pull it out of the slot.

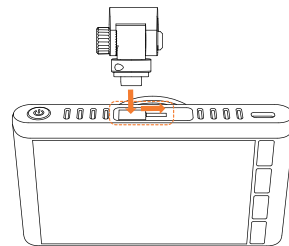
03

## Installing Your DashCam



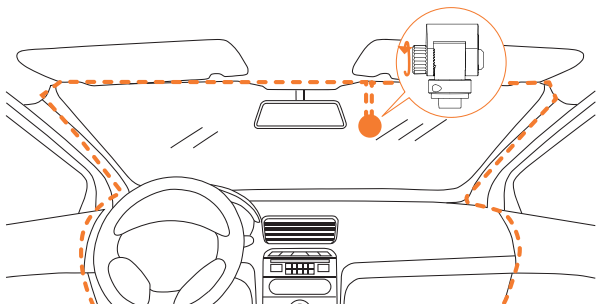
- Never install this product while driving.
- Install this product near the rear-view mirror to obtain the best open-field view. Do not install in a location that will obstruct your required driving view.
- Make sure that the lens is within the wiping range of the windshield wiper to ensure a clear view even when it rains.
- Do not touch the lens with your fingers. Finger grease may be left on the lens and will result in unclear videos.
- The mount is adhesive and may be destroyed if it is removed from the windshield.

- 1 Attach the DashCam onto the mount.



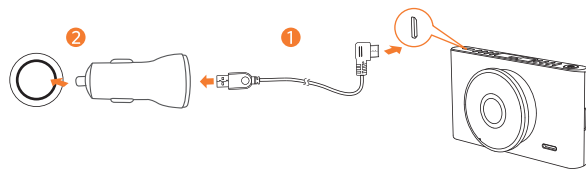
04

- 2 Select a location on the windshield near the right bottom corner of the rear-view mirror, clean with clear water and wait until fully dry.
- 3 Remove 3M adhesive sticker and firmly affix the mount onto the windshield. Alternatively, cover the suction mount onto the windshield and rotate the lock as indicated.
- 4 Use the crowbar to press and hide the charging cable into the seams and weatherstrips around the edge of the dashboard.
- 5 Adjust the lens viewing angle to ensure that it is aligned with the road ahead, then rotate the fixing knob to fasten.



## Connecting to Power

- 1 Connect the car charger and DashCam by using the charging cable.
- 2 Plug the other end of the car charger to your vehicle's cigarette lighter socket.



- 3 Once the car engine is started, DashCam will automatically power on and start recording. Once the car engine is shut down, DashCam automatically saves the recording and turns off within 30 seconds.

## Using Your DashCam



As a driver, you have full responsibility to drive safely and adhere to all applicable traffic regulations.

### Record Videos

- 1 When connected to a car charger, DashCam automatically starts recording and a red dot flashes on the screen. The current recording duration is displayed, and the current date and time is displayed.
- 2 To enable / disable the audio recording, press

### Protect the Current Recording

By default, DashCam uses a sensor to automatically detect accidental collisions and protect the video file with duration of 30 seconds, and is displayed. This indicates that those recordings have been locked and will not be overwritten by new video clips.

To protect the current recording manually, press

## Playback Videos




The DashCam stops recording while viewing videos or settings.

- 1 Press to view all saved videos.
- 2 Select a video to playback.






Touch Button	Virtual Button	Function
		Play / Pause
		Delete Current / Delete All
		Lock Current / Unlock Current
		Back to previous menu

## System Setup

To adjust DashCam's settings, Press .

Menu Options	Description	Available Options
<b>Resolution</b>	Set a desired video resolution.	720P 60FPS / 720P 30FPS / 1080P 30FPS
<b>Loop Recording</b>	Set the duration of each recording video clip.	1 Minute / 3 Minutes / 5 Minutes / 10 Minutes
<b>Sensitivity</b>	Sensitivity for gravity helps to detect vibration and shock while driving and makes DashCam to respond appropriately.	Low / Medium / High / Off
<b>Parking Monitor</b>	Enable to keep DashCam in standby mode. Motion will be detected for 15 times and DashCam starts recording a 30 second video each time.	Low / Medium / High / Off
<b>Date</b>	Set date and time	Press + / - to adjust the value, press → to next option, press  to save
<b>Language</b>	Set on-screen display menu language.	English / Deutsch / 日本語 / 简体中文 / Español / Italiano / Français

<b>LCD Auto Off</b>	Turn off the screen backlight after a period of inactivity.	30 Seconds / 60 Seconds / Off
<b>Button Sound</b>	Mute or unmute.	On / Off
<b>Default</b>	Reset all options to the default settings.	Cancel / OK
<b>Format</b>	Format the memory card and all the data will be deleted.	Cancel / OK
<b>Water Mark</b>	Display / hide the date and time on the recordings.	On / Off
<b>Frequency</b>	Match the video frequency of DashCam with the electrical frequency of your location.	50 Hz (EU / China) / 60 Hz (US / Japan)
<b>About</b>	Check the current version number.	

Touch Button	Virtual Button	Function
		Back to recording mode
		Toggle the next setting
		Toggle the previous setting
		Click to confirm a selection

## Specifications



Specifications are subject to change without notice.

Screen: 3" LCD color TFT (960 x 240)

Camera sensor: Sony Exmor IMX 323

Camera lens: wide-angle lens 145°

Chipset: Ambarella A12

Power input: 5V = 1A

Max video resolution: 1080P 30FPS (1920x1080)

Video clip format: .MP4

Battery capacity: 470mAh


Operating temperature range: -20°C to 70°C / -4°F to 158°F

Storage temperature range: -30°C to 85°C / -22°F to 185°F

Weight: Approx. 102 g / 3.6 oz

Size: 99\*30\*55 mm / 3.9\*1.2\*2.2 in

## FAQ

- 1 Can not record?
  - Check if the memory card is inserted properly and there is enough free capacity.
  - Check the battery level.
- 2 Blurred image?
  - Use a clean, soft lens-cleaning cloth to gently clean the lens.
- 3 Malfunction or crash?
  - Press and hold the POWER button for at least 8 seconds.
- 4 Blank screen?
  - The screen saver is activated. Change settings to "Off" if required.
- 5 How to enable parking monitor?
  - Press , select "Parking Monitor" > "ON".
- 6 Worry about the memory card is full?
  - Continuous loop recording allows to overwrite the old unlocked files.



## Notice



This product complies with the radio interference requirements of the European Community.



This product is designed and manufactured with high quality materials and components, which can be recycled and reused.



This symbol means the product must not be discarded as household waste, and should be delivered to an appropriate collection facility for recycling. Follow local rules and never dispose of the product and rechargeable batteries with normal household waste. Correct disposal of old products and rechargeable batteries helps prevent negative consequences for the environment and human health. Removal of the built-in battery invalidates the warranty and may destroy the product. Always bring your product to a professional to remove the built-in battery.

**Note:** This equipment has been tested and found to comply with the limits for a Class B digital device, pursuant to Part 15 of the FCC Rules. These limits are designed to provide reasonable protection against harmful interference in a residential installation.

This equipment generates, uses and can radiate radio frequency energy and, if not installed and used in accordance with the instructions, may cause harmful interference to radio communications. However, there is no guarantee that interference will not occur in a particular installation. If this equipment does cause harmful interference to radio or television reception, which can be determined by turning the equipment off and on, the user is encouraged to try to correct the interference by one or more of the following measures: (1) Reorient or relocate the receiving antenna. (2) Increase the separation between the equipment and receiver. (3) Connect the equipment into an outlet on a circuit different from that to which the receiver is connected. (4) Consult the dealer or an experienced radio / TV technician for help.

## FCC Statement

This device complies with Part 15 of the FCC Rules. Operation is subject to the following two conditions: (1) This device may not cause harmful interference, and (2) This device must accept any interference received, including interference that may cause undesired operation.

**Warning:** Changes or modifications not expressly approved by the party responsible for compliance could void the user's authority to operate the equipment.



12-month limited warranty



Lifetime technical support



[support@goroav.com](mailto:support@goroav.com)



+1 (800) 988 7973 (US) Mon-Fri 9:00 - 17:00 (PT)



[@GoRoav](#)



[@GoRoav](#)