

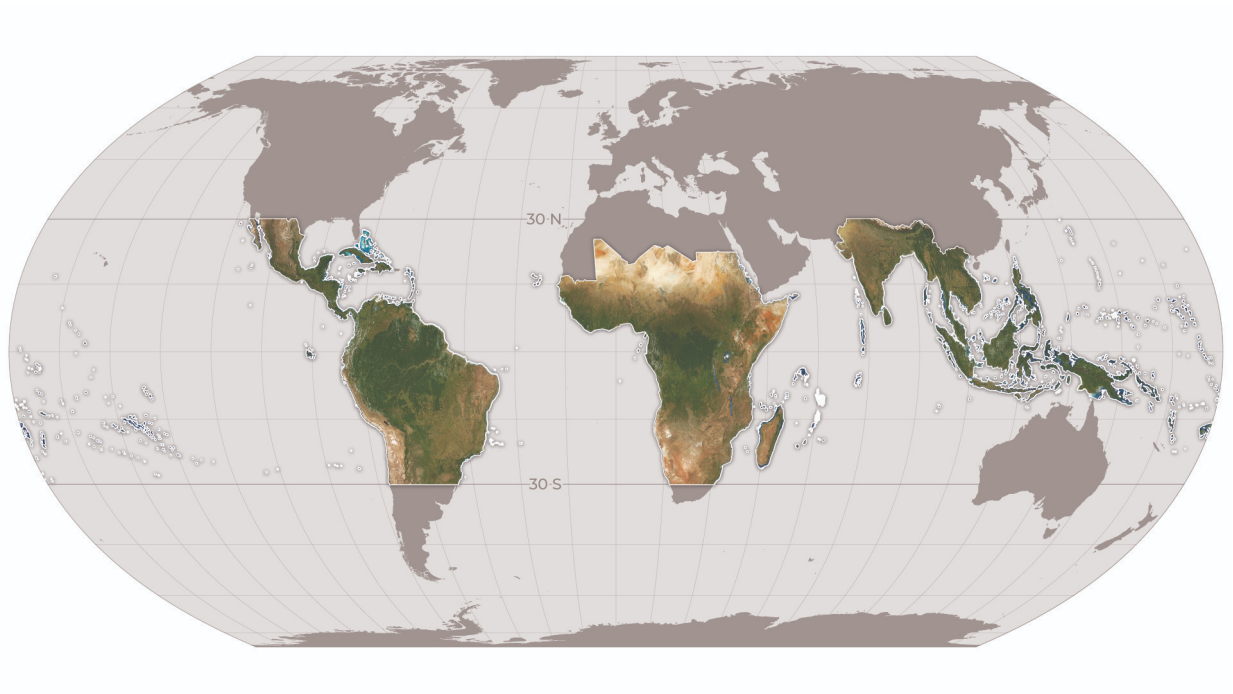


NICFI
SATELLITE DATA
PROGRAM



NICFI SATELLITE DATA PROGRAM

FREQUENTLY ASKED QUESTIONS



Norwegian Ministry
of Climate and Environment



NICFI

Norway's International Climate and Forest Initiative

KSAT
KONGSBERG
KONGSBERG SATELLITE SERVICES



AIRBUS



1. What exactly are the data products offered by this program?

This program makes high-resolution (<5m per pixel) optical satellite imagery of the tropics freely available to all in the pursuit of helping stop deforestation and combat climate change.

Specifically, the products include:

- **PlanetScope Visual Mosaics:** Optimised for visual display and interpretation, Visual Mosaics offer a ‘true-colour’ representation of spatially accurate data with minimised haze, illumination, and topographic effects. These are ideal for users visually monitoring or interpreting satellite imagery.
 - Product specifications:
 - Area: Global Tropic regions (see also Question 6)
 - Spatial Resolution: 4.77m per pixel
 - Spectral Resolution: Red, Green, Blue (3-band)
 - Temporal resolution:
 - Archive: (December 2015 - August 2020): Bi-Annual
 - Monitoring (September 2020 - Onwards): Monthly
- **PlanetScope Surface Reflectance Mosaics (Analysis Ready):** Optimised for scientific and quantitative analysis, these mosaics offer an analytic or ‘ground truth’ representation of spatially accurate data with minimised effects of atmosphere and sensor characteristics. These include a fourth band (near-infrared) and are suited for a variety of vegetation indices, including Normalised Difference Vegetation Index (NDVI), Enhanced Vegetation Index (EVI), Normalised Difference Water Index (NDWI), and more. These are ideal for users scientifically or quantitatively monitoring or interpreting satellite imagery.
 - Product specifications:
 - Area: Global Tropic regions (see also Question 6)
 - Spatial Resolution: 4.77m per pixel
 - Spectral Resolution: Red, Green, Blue, Near-Infrared (4-band)
 - Temporal resolution:
 - Archive: (December 2015 - August 2020): Bi-Annual
 - Monitoring (September 2020 - Onwards): Monthly

*Please note, there will be a measured rollout of all archive mosaics:

- 2018-2020 archive mosaics available today



- 2017-2018 archive mosaics available 22 November 2020
- 2015-2017 archive mosaics available 22 December 2020

Only Optical data (Red, Green, Blue and Near Infrared) is offered under the scope of this project. Synthetic Aperture Radar (SAR) is not included.

2. How do I sign up to access this program?

Get started at <https://www.planet.com/nicfi/>. Once you enter your email on the form, you will receive a follow-up email with a unique link to activate your account. The link will direct you to a signup form to enter further details about you and your organization. Finally, you will be asked to agree to the [Terms of Service](#) in support of the NICFI Purpose. Once you complete this form, you will be redirected to the access portal and on your way to working with these data products!

Please note, current Planet customers must use a different email than the one associated with their existing Planet account.

3. What are the User Access Levels?

There are three User Access Levels to the Program datasets:

- **Level 0 – Open and Public Good:** Public view-only access of the Visual Mosaics (Bi-annual Archive and Monthly Monitoring) through Purpose Ally sites. Purpose Allies are entities that engage the public on forests and land use monitoring (e.g. www.globalforestwatch.org)
- **Level 1 – As Open as Possible:** Access to download Surface Reflectance mosaics (Bi-annual Archive and Monthly Monitoring) from the Planet Platform. User groups include Third Party Participants e.g. those using the data for their own usage in pursuit of the Purpose as well as Purpose Allies.
- **Level 2 – Selected Partners:** Strategic partners defined by Norwegian Ministry of Climate and Environment who have access to Level 1 data layers as well as the underlying scenes from Planet and selected historical archive data from Airbus back to 2002.



4. Once I have registered, how do I access the products?

You can access these data products through a number of web and API-based tools.

- **Visual Mosaics (Level 0 - View only):** will be displayed by Purpose Allies, such as [Global Forest Watch](#) with more to come!
- **Visual Mosaics (Level 1):** will be available through program registration in the Planet Platform, which includes access to Planet's [APIs](#) and [web applications](#).
- **Surface Reflectance Mosaics (Level 1):** will be available through program registration with the Planet Platform, which includes access to Planet's [APIs](#) and [web applications](#).
- **Visual & Surface Reflectance Mosaics (Level 1):** will also be available in third party applications, such as QGIS, ArcGIS and Google Earth Engine, through [Planet's Plug-ins](#) and [Streaming Services](#).

5. What if I am a current Planet customer?

Current Planet customers are welcome to sign up for the NICFI Satellite Data Program, but must register with a different email than the one associated with their existing Planet account.

6. What is the duration of the products and program?

The data products cover an Archive (2015-2020) and Monitoring (2020-2023) Period:

- The Archive Period offers 2x/year (Bi-Annual) coverage
- The Monitoring Period offers 12x/year (Monthly) coverage. The Monitoring Mosaics will be updated every month from September 2020 to 30 August 2023, with the possibility for extension for a further one year.

All data products licensed through this program have a perpetual license meaning that data downloaded can continue to be used once the program has ended.

7. What are the Terms of Use?

The Level 1 data is licensed by Planet under a [custom, non-commercial license](#) (similar to a Creative Commons-type license) in support of the NICFI Purpose.

The Purpose of this license is to provide users globally with access to Planet's proprietary Platform and associated Content (tropical high-resolution mosaics) for the primary purpose of:

Reducing and reversing loss of tropical forests, contributing to combating climate change, conserving biodiversity, contributing to forest regrowth, restoration and enhancement, and facilitating sustainable development.

All use must be non-commercial or not in the primary pursuit of profit.

In support of and with the primary goal of fulfilling the Purpose, once your Planet account is activated and once you have agreed to the terms of the license, you are authorised to access, view, download, use, display, print, and create derivative products from the Content (tropical mosaics).

Level 0 is publicly displayed and accessible to all.

8. What are the included & excluded geographies?

The mosaics cover tropical forested regions between 30 degrees North and 30 degrees South. This is a geographic area of roughly 45 million square kilometres. Not included in the tropical mosaics are non or low forest covered areas as well as countries such as Australia, China, and USA and Overseas Territories of countries outside of the tropic region (30 degrees North and 30 degrees South). Countries included in the tropical mosaics include:

American Samoa	Central African Republic	Fiji	Lesotho	Niue	Solomon Islands
Angola	Chad	French Guiana	Liberia	Northern Mariana Islands	Somalia
Antigua and Barbuda	Chile	French Polynesia	Madagascar	Palau	South Africa
Argentina	Colombia	Gabon	Malawi	Panama	Sri Lanka
Bahamas	Comoros	Gambia	Malaysia	Papua New Guinea	St. Vincent and the Grenadines
Bangladesh	Cook Islands	Ghana	Republic of Maldives	Paraguay	Sudan
Barbados	Costa Rica	Grenada	Mali	Peru	Suriname



Belize	Cote d'Ivoire	Guatemala	Marshall Islands	Philippines	United Republic of Tanzania
Benin	Cuba	Guinea	Mauritius	Pitcairn Islands	Thailand
Bhutan	Democratic Republic of the Congo	Guinea Bissau	Mexico	Republic of the Congo	Timor-Leste
Bolivia	Djibouti	Guyana	Federated States of Micronesia	Rwanda	Togo
Botswana	Dominica	Haiti	Mozambique	Saint Kitts and Nevis	Tonga
Brazil	Dominican Republic	Honduras	Myanmar	Saint Lucia	Trinidad and Tobago
Brunei Darussalam	Ecuador	India	Namibia	Samoa	Tuvalu
Burkina Faso	El Salvador	Indonesia	Nauru	Sao Tome and Principe	Uganda
Burundi	Equatorial Guinea	Jamaica	Nepal	Senegal	Vanuatu
Cambodia	Eritrea	Kenya	Nicaragua	Seychelles	Venezuela
Cameroon	Eswatini	Kiribati	Niger	Sierra Leone	Vietnam
Cape Verde	Ethiopia	Lao Peoples' Democratic Republic	Nigeria	Singapore	Zambia
					Zimbabwe

9. Where do I go if I have a question or need support?

A 24/7 support service is available to all throughout the contract term. This tiered support system has a single access point through the KSAT team who manage the requests, respond, or reassign your ticket to the appropriate teams at Planet or Airbus as necessary. To access this service please send your request to nicfi-servicedesk@ksat.no.