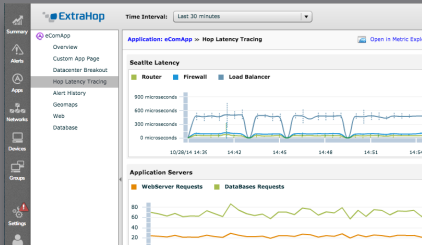


ExtraHop + APPDYNAMICS

Combine Wire Data with Agent Data for Comprehensive Visibility



The technology partnership between ExtraHop and AppDynamics enables you to combine your wire data and agent data for a comprehensive and correlated view of application performance. For example, you can trace individual user requests as they pass through firewalls, proxies, routers, and load balancers.

“The integration between ExtraHop and AppDynamics eliminates blind spots in the application delivery chain with time-based correlation of application metrics and observed behavior on the wire.”

– **Matthew Polly**, Head of Business Development and Global Alliances at AppDynamics

JOINT SOLUTION HIGHLIGHTS

- Visibility into blind spots in the application delivery chain
- Time-based correlation of application metrics and observed behavior on the wire
- Complementary, best-of-breed solutions for agent data and wire data

TRY EXTRAHOP FREE

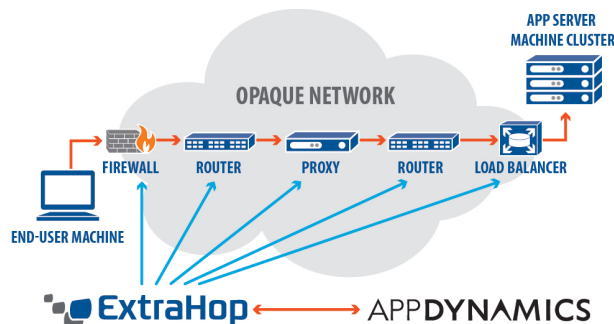
Download the ExtraHop Discovery Edition, a free-forever virtual appliance that lets you start exploring what is possible with wire data analytics.

www.extrahop.com/discovery

SEE INTO THE “OPAQUE NETWORK”

For many application teams, the network is opaque. A number of network devices that cannot be instrumented lay in the path between the end user and application servers, including firewalls, proxies, load balancers, switches, and routers.

Driven by the demand of our customers, ExtraHop and AppDynamics have formed a technology partnership that combines the complementary transaction-tracing capabilities of both solutions. With this integration, the ExtraHop platform recognizes and traces AppDynamics correlation headers appended to every transaction by the AppDynamics agent. Utilizing its Open Data Stream capabilities, the ExtraHop platform can then provide detailed hop-by-hop timing metrics to AppDynamics as those tagged transactions pass through network devices.



If, for example, a load balancer is slowing down a particular user's transaction, application support teams will be able to see the ExtraHop timing data for each hop in AppDynamics. They can then click into the load balancer's activity page in ExtraHop to explore the root cause of the slowdown. This ability to drill down from the application into the network or drill up from the network into the application makes the ExtraHop and AppDynamics truly unique.

SUPPORT FOR THE ENTIRE APPLICATION DELIVERY CHAIN

ExtraHop enables application teams to see the entire environment. The ability to easily explore, baseline, and alert on the L2-L7 communications of any device supports the following application lifecycle tasks:

- Quick identification of issues in the production environment, such as poorly written queries, server misconfigurations, and more
- Faster troubleshooting by isolating problems outside of the application, such as storage, DNS, Citrix, or WAN optimization
- Capacity planning based on time-based comparisons of performance baselines.

APPLICATION TEAMS IMPROVE PERFORMANCE WITH EXTRAHOP



“The ExtraHop platform gives us greater confidence that new applications are developed and deployed correctly. We can verify assumptions and ensure the best result with performance measurements across all the tiers of our application environment.”

– **Stefan Pörn**, IT Operations Manager, Axstores



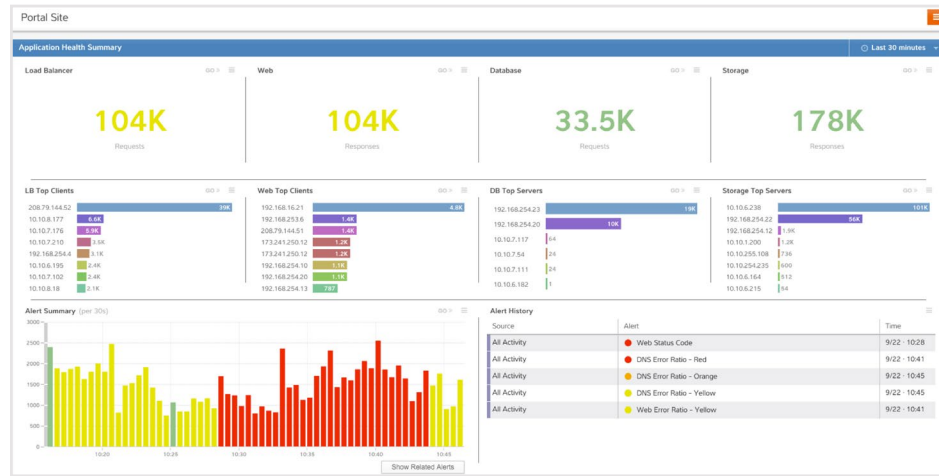
“One of the key differentiators for ExtraHop is that you can involve your development team in production.”

– **Jim Hutchins**, CTO, T2



“With visibility across all tiers of the environment, we can determine whether a performance problem is due to infrastructure, misconfiguration, or possibly a code-level issue. ... We catch performance issues earlier in the development cycle this way.”

– **John Hluboky**, VP of Technical Operations, Practice Fusion



ExtraHop provides a correlated, cross-tier view of L2-L7 communications.

BUILD AN IT OPERATIONS ANALYTICS ARCHITECTURE

Forward-thinking IT organizations are building IT Operations Analytics (ITOA) architectures that combine machine data, agent data, synthetic data, and wire data. ExtraHop and AppDynamics represent best-in-class solutions for the wire data and agent data categories, respectively. By combining ExtraHop and AppDynamics solutions, your organization can begin to retire legacy framework tools that come with onerous licensing and maintenance costs.

- Machine data is system self-reported data, including logging provided by vendors, SNMP, and WMI. This information about system internals and application activity helps IT teams identify overburdened machines, plan capacity, and perform forensic analysis of past events.
- Wire data is all L2-L7 communications between all systems. This source of data has traditionally included deep packet inspection and header sampling but recent advancements allow for far deeper, real-time wire data analysis.
- Agent data from byte-code instrumentation and call-graph captures. Code diagnostic tools have traditionally been the purview of Development and QA teams. However, with the advent of agile methodologies and service-oriented architectures, most modern applications run agents in production since most performance bottlenecks are unraveled and need to be fixed in live systems with minimal downtime.
- Synthetic data from synthetic transactions and service checks. This data enables IT teams to test common transactions from locations around the globe or within the datacenter.

READ MORE BY DOWNLOADING THE WHITE PAPER,
Designing and Building an Open IT
Operations Analytics (ITOA) Architecture



<http://www.extrahop.com/open-itoa/>

ABOUT EXTRAHOP NETWORKS

ExtraHop is the global leader in real-time wire data analytics. The ExtraHop platform analyzes all L2-L7 communications, including full bidirectional transactional payloads. This provides the correlated, cross-tier visibility essential for today's complex and dynamic IT environments. The ExtraHop platform scales up to 20Gbps and deploys without agents in 15 minutes.

ABOUT APPDYNAMICS

At AppDynamics, our Application Intelligence Platform empowers today's software-defined businesses with the ability to proactively monitor, manage, and optimize the most complex software environments. All in real time, and all in production. So at every point in time, you can know more, and know it faster. It's more than monitoring—it's true Application Intelligence.